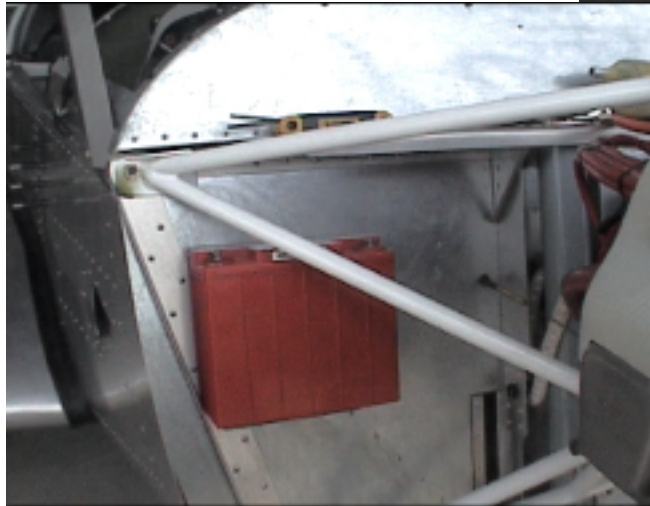


Zenith 601- Battery installation

1.- Find a location on the left side of the Firewall (upper left corner).

2.- Mark the bottom corners of the battery on the firewall. Install the 1.5" X 6" aluminum angle support. Plan to rivet one rivet through the side stiffener and one through the L angle.

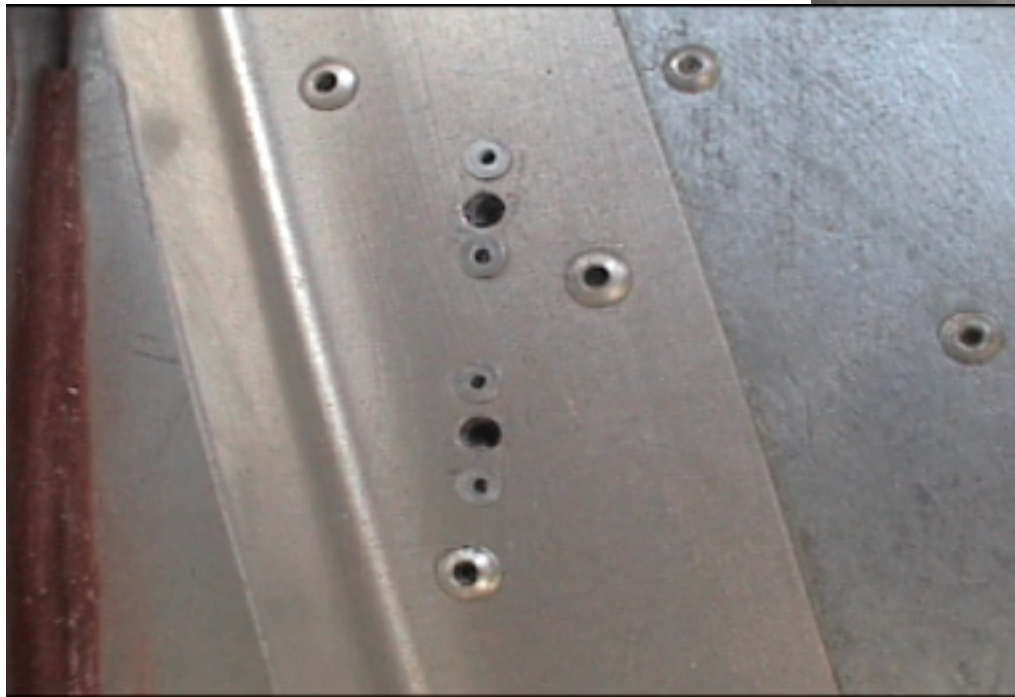
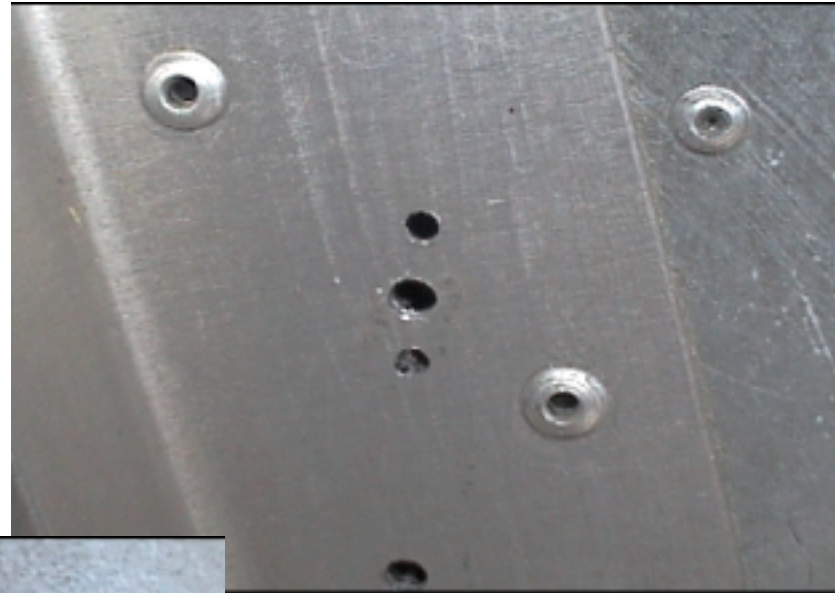


It is recommended that the battery be placed as far left as possible so as to make space for the oil recovery kit and the cabin heat option. Plan the right side of the firewall to be taken by the air box.

3.- Drill two holes on each side of the battery clamp



4.- install nut plates



4.- Put the adhesive backed foam cushion on the inside of the battery clamp.

5.- Install battery and clamp.

