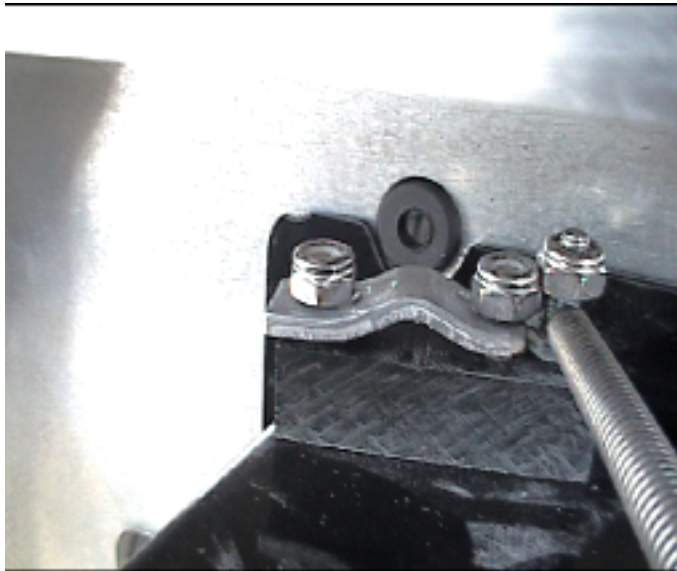
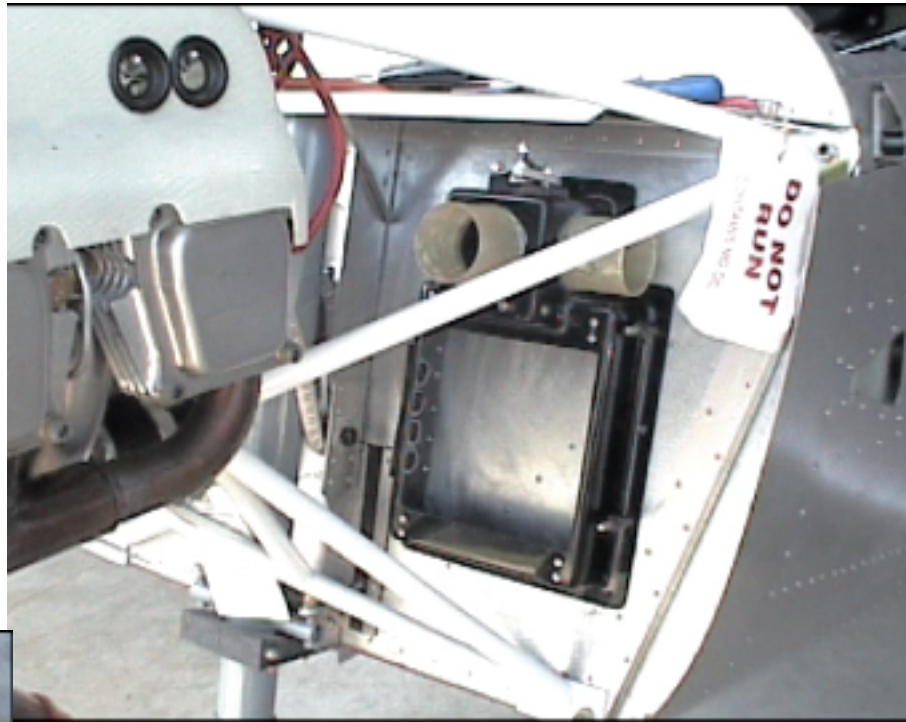


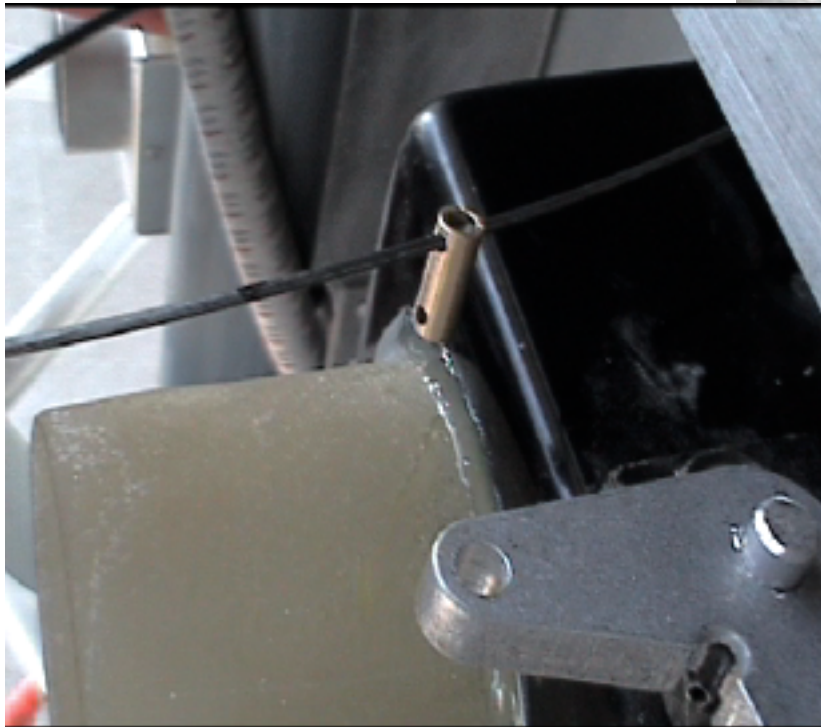
CH601 Carb Heat System

1.- Position the air box on the right side of the firewall such that the scat hose connection is level with the carb's air intake. Make sure that the lever mechanism does not touch the firewall top stiffener. Drill and rivet into place.



2.- Mark and drill a hole through the firewall in line with the cable attachment point on the air box. You will need to cut out the air box flange where the cable will run through. (Place a rubber grommet)

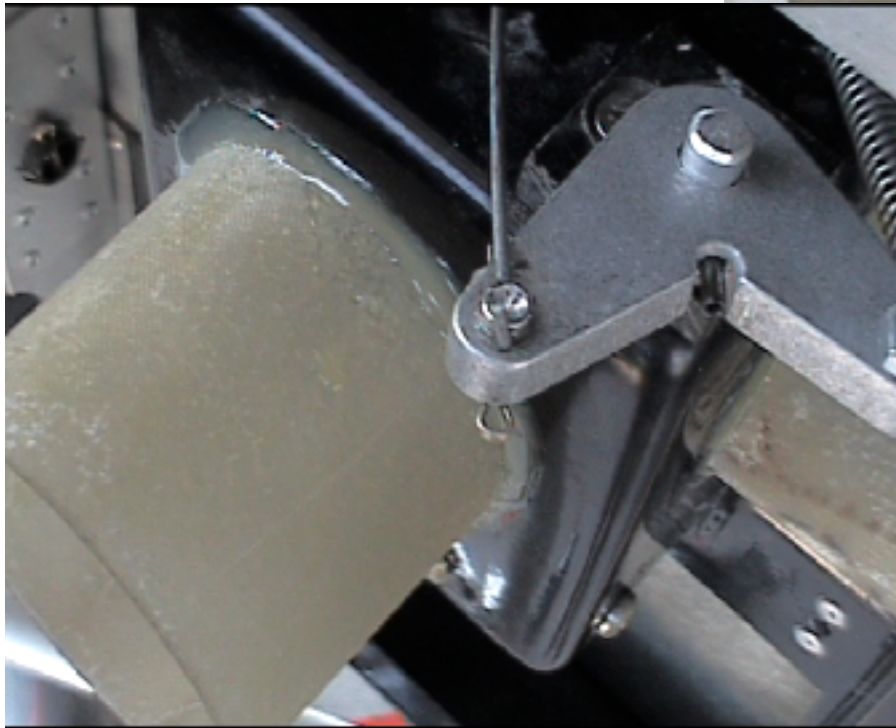
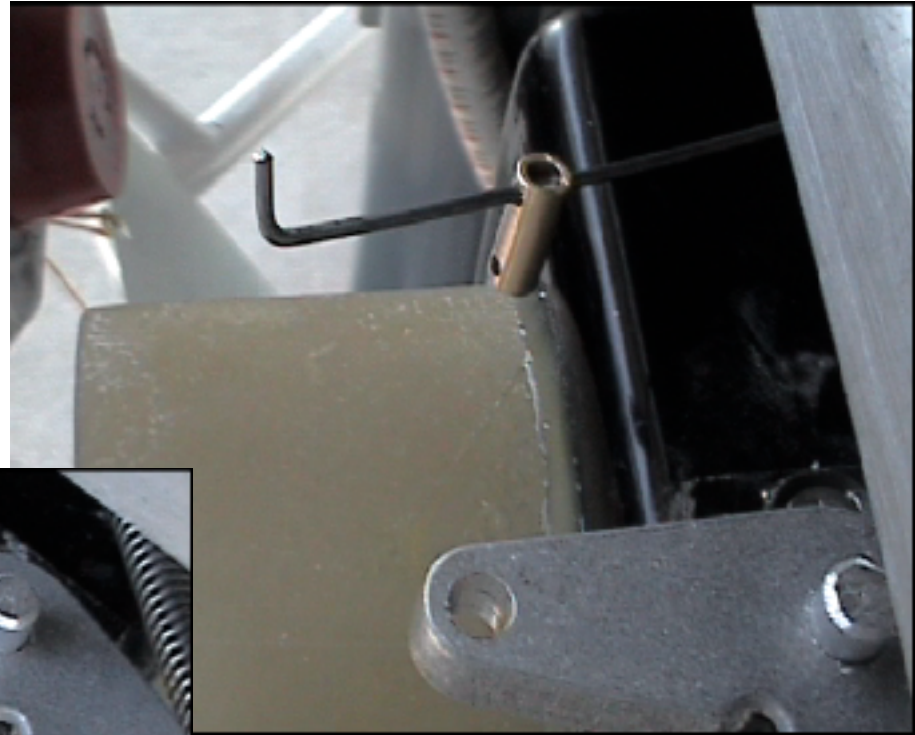
3.- Run the carb heat cable through the firewall. Cut the cable housing to length.



4.- Insert the brass pin.

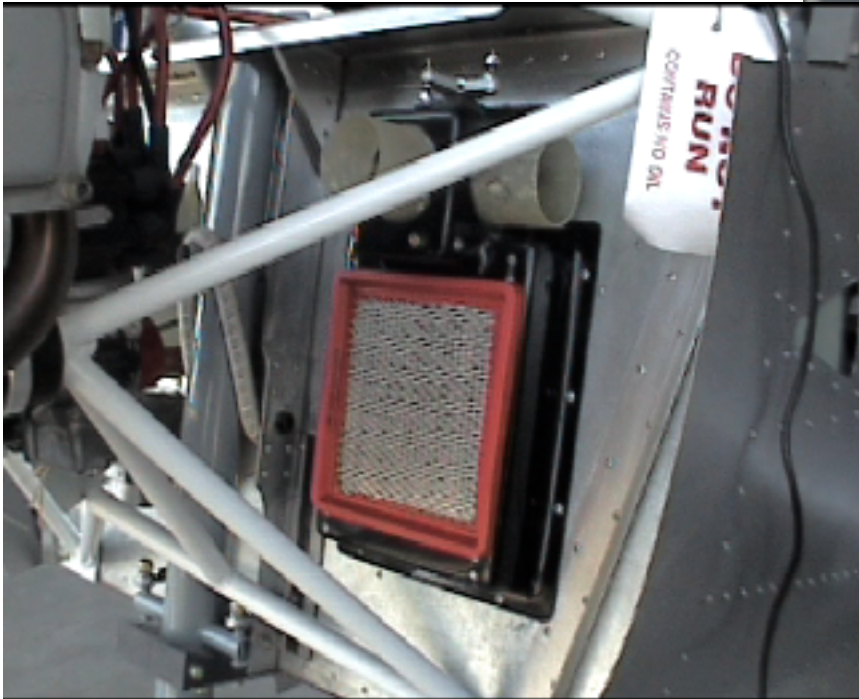
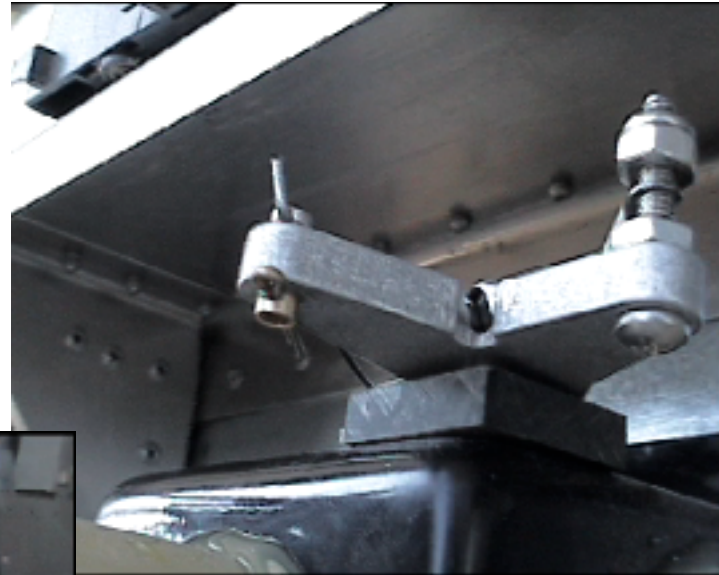
5.- Mark where the cable touches the lever in the closed position (incoming air from heat muff is closed - see page 5), another words, when you pull on the carb heat cable, you will open the incoming air from the heat muff.

6- Bend the cable 90 degrees and cut excess off.



7.- Install the brass pin into the lever. Solder the brass pin to the end of the carb heat cable.

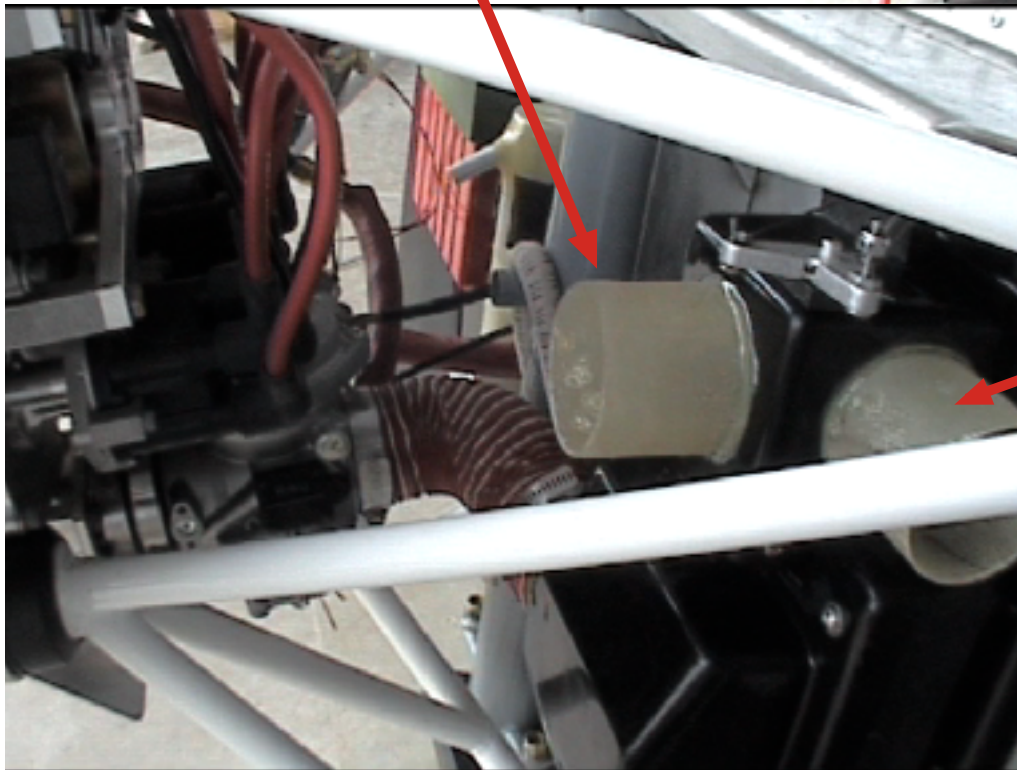
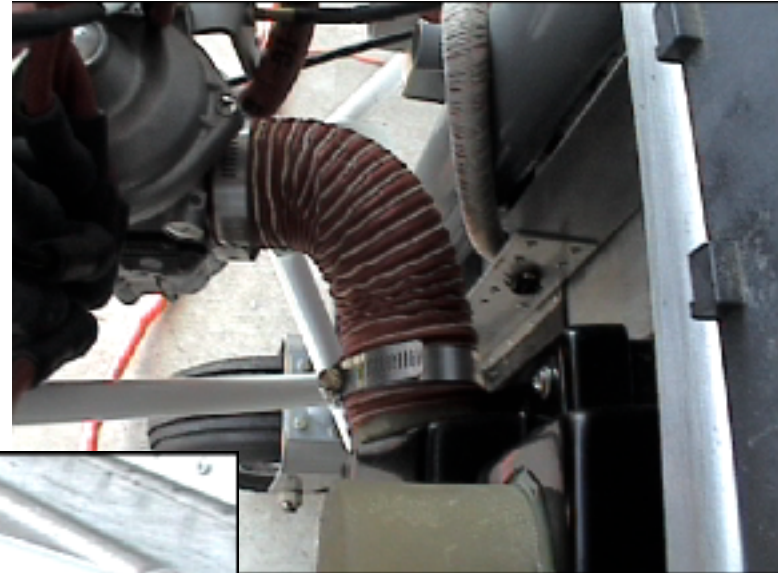
8.- Install cotter pin.



9.- Install air filter and cover.

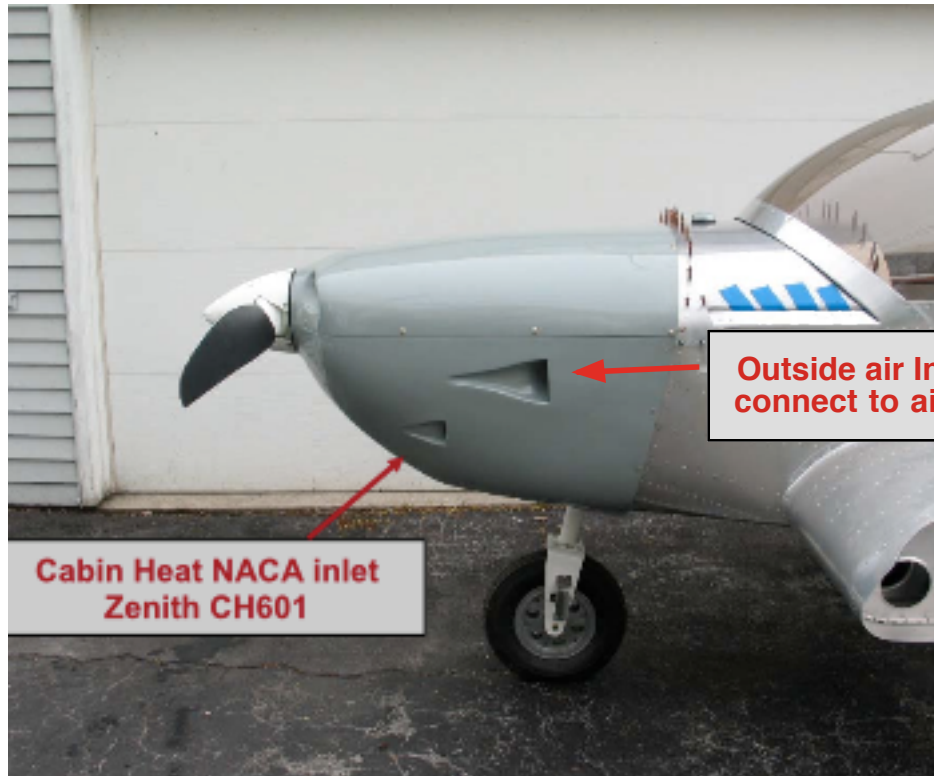
9.- Install scat hoses

Carb Heat Muff Air Intake



Outside Air Intake





**Cabin Heat NACA inlet
Zenith CH601**

**Outside air Intake -
connect to air box.**