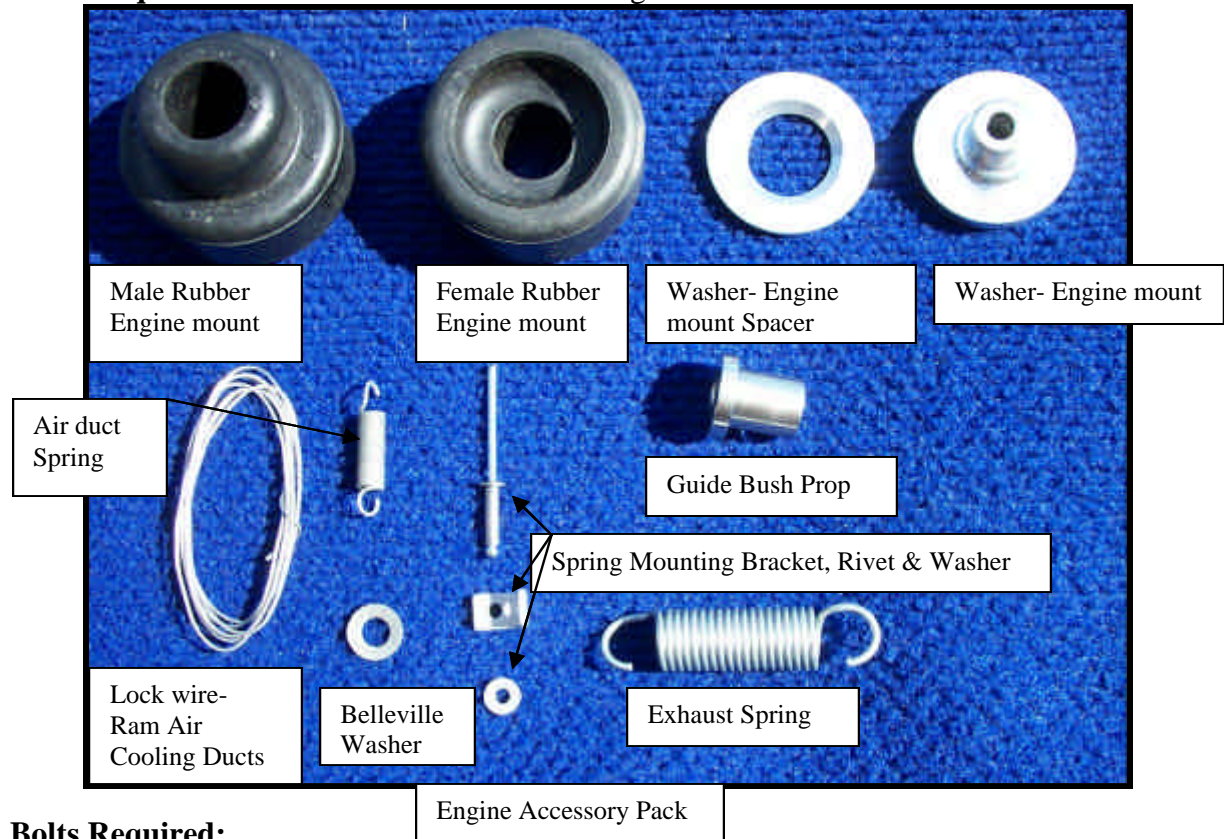


Connect Engine

Reference: Photo

Parts Required: Various – Refer to Packing List for this Section

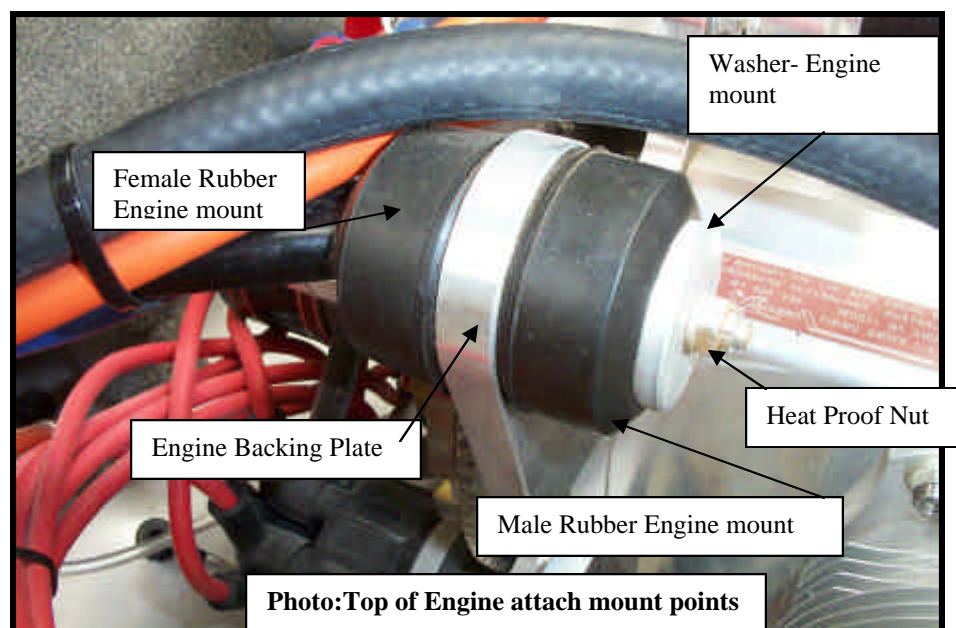


Bolts Required:

Engine – Engine Mount :- AN4-31a x 4

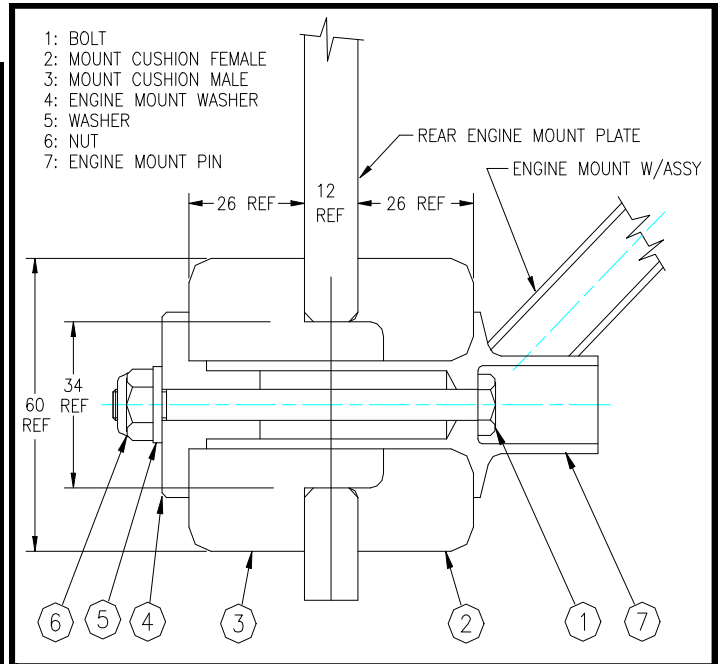
Procedure:

1. Attach Female Rubbers Engine mount to both engine attach point on the Top Only.
2. Attach Male Rubber Engine mount to lower engine mount pins.
3. With the Back of the Aircraft Supported & the wheels chocked, lift the engine onto the engine mount.
4. Attaching the lower engine mount points first by tilting the front of the engine down. Continue raising the engine & align the top engine mount pins.
5. Insert the Male Rubber engine mount onto TOP engine mount spigots followed by the Washer-Engine mount Spacer, Washer-

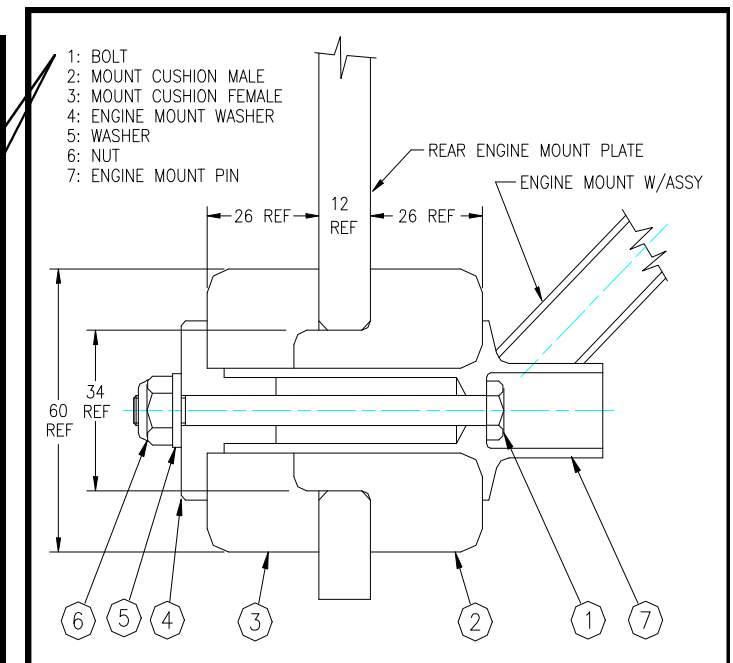
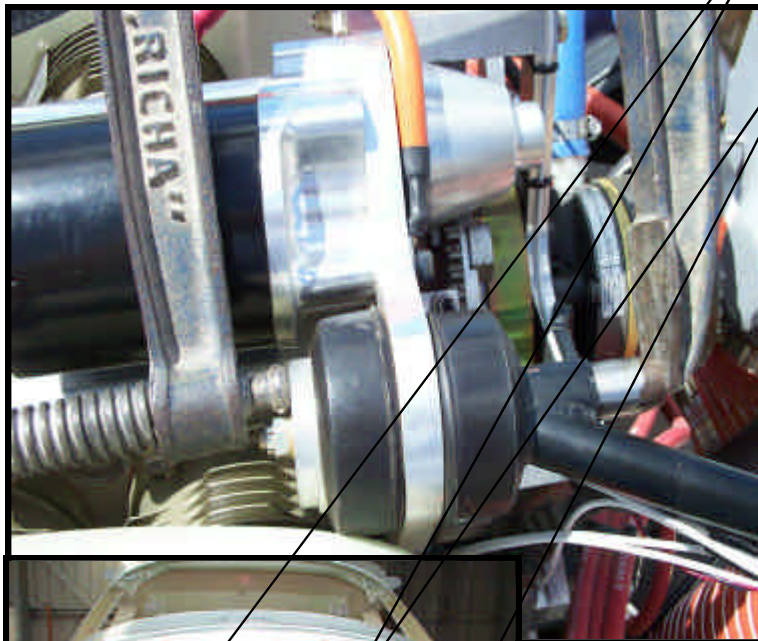


Engine mount, 1/4" washer & Heat Proof nut. Refer to drawing.

6. Compress Rubbers by using a long deep reach socket inside in pin Engine mount & a G-Clamp with the swivel take off the Ball. See Photo.

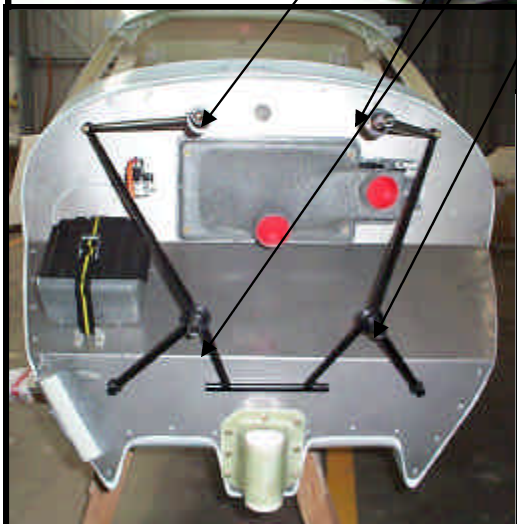


Top Engine mount Rubber

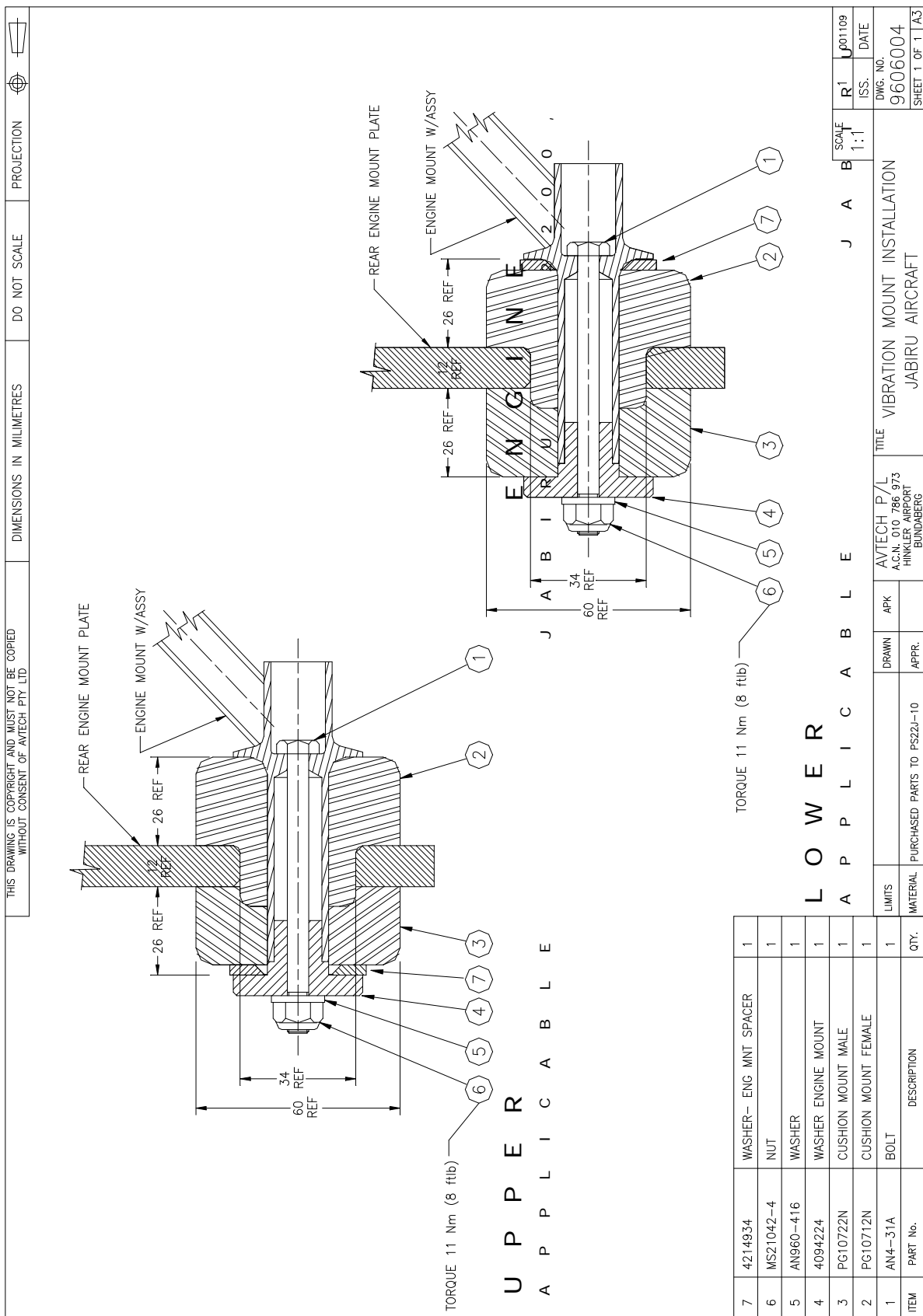


Bottom Engine mount Rubber

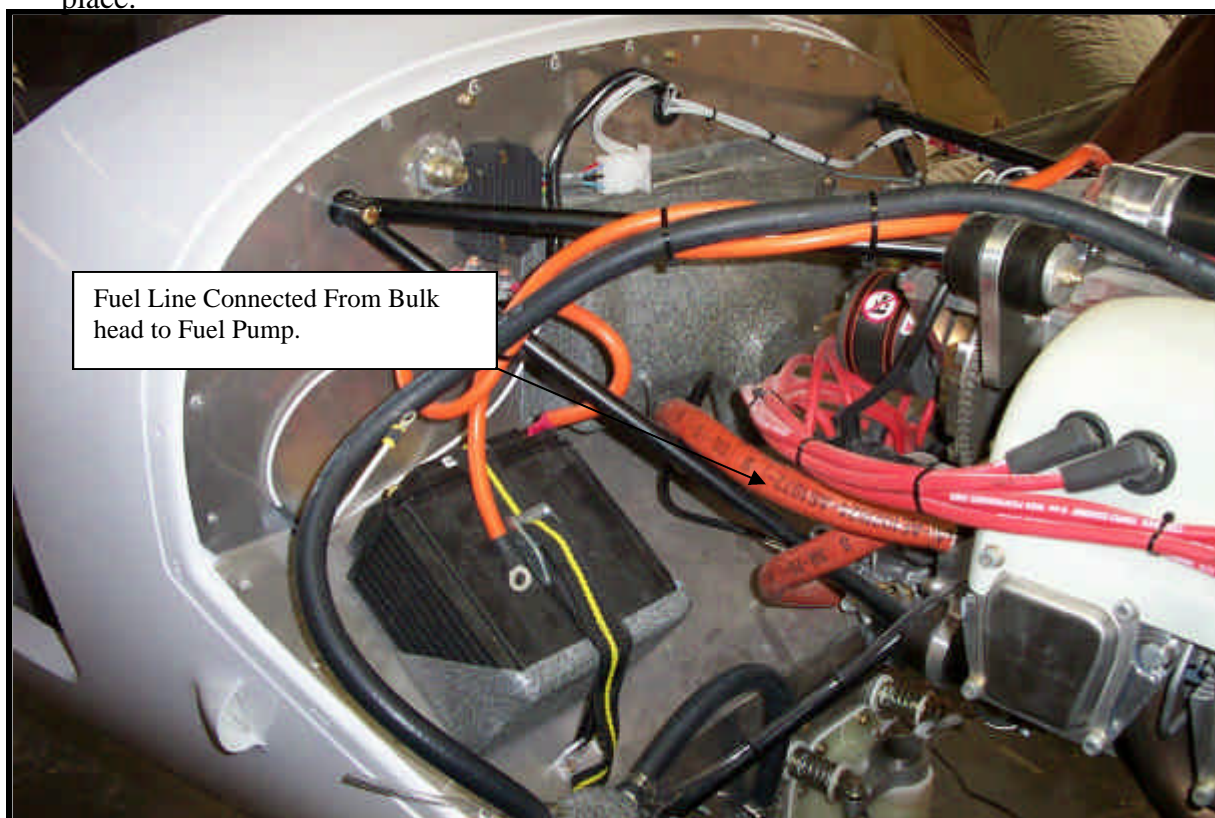
7. Repeat same procedure for lower engine mount rubbers except attach the Engine mount rubber male first. Refer to Drawing.
8. Tighten Nut until firm. (Engine mount Washer will compress until it touches Pin Engine mount.)



Connect Engine

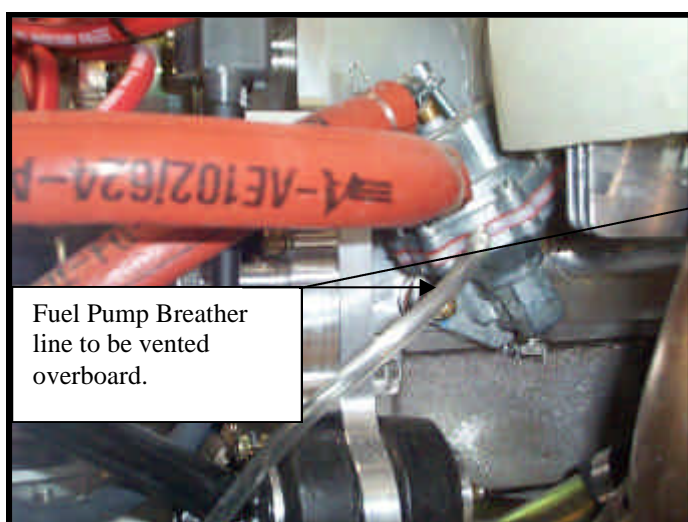


9. Connect the fuel line to fuel pump. Refer to photo). Make sure the fireproof sleeve is in place.

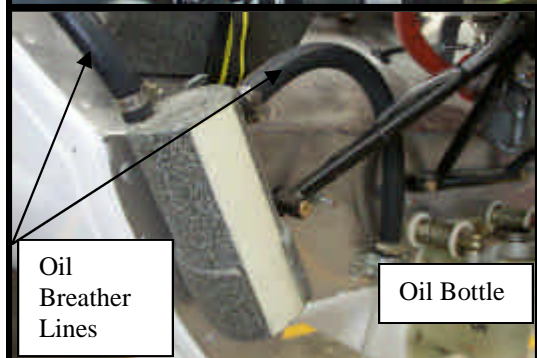


10. Make sure the Fuel Line from fuel pump to the carburettor in connected.

11. Ensure that the fuel overflow line is in place, refer to photo, and secured to vent overboard.



12. Fit the oil over flow



bottle to the firewall by drilling and Riveting oil bottle holder in place using 73as 6-6 rivets. Refer to photo

13. Connect the oil

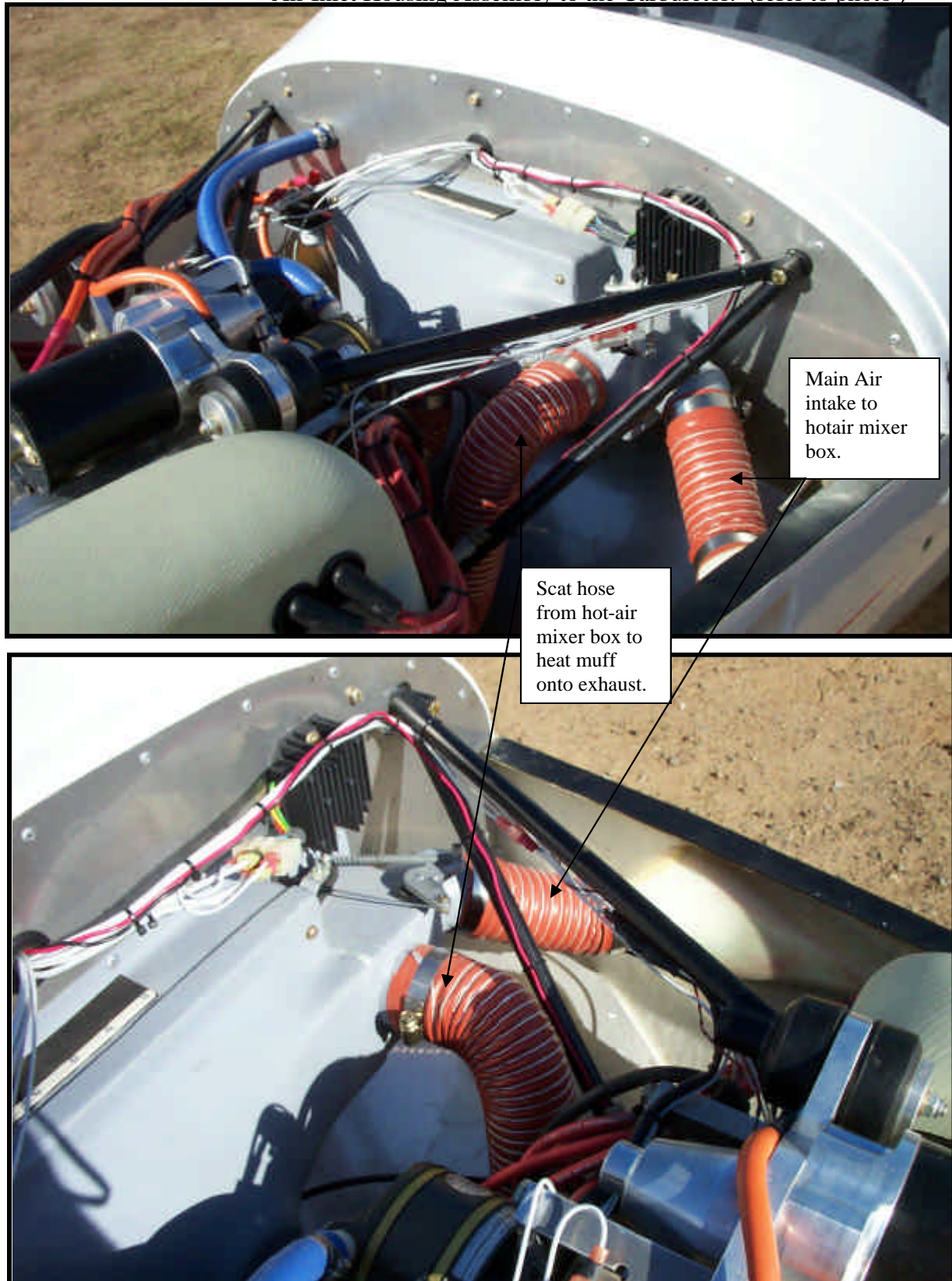




breather line.

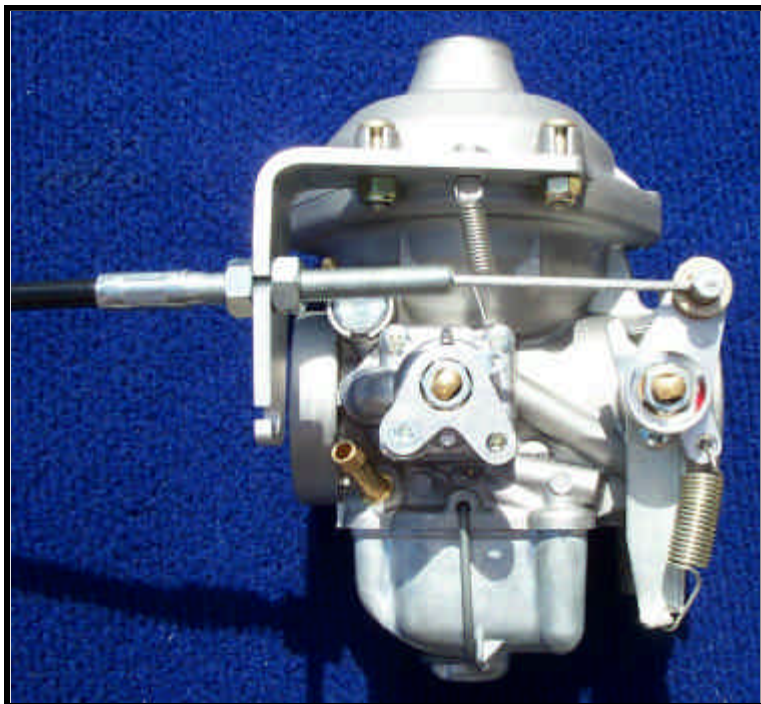
Ensure that the oil overflow line is in place and vents overboard.

14. Fit Scat hoses
- NACA duct to Air Inlet Housing Assembly.
 - Hot Air Muff to Carby Heat Inlet
 - Air Inlet Housing Assembly to the Carburetor. (refer to photo)





15. Fit Carburetor cable to Carby making sure you use 2 x 5/16" washers on pin to align cable & a split pin on opposite side.



Fit Engine Sensors

Reference: Photo
Parts Required: as detailed

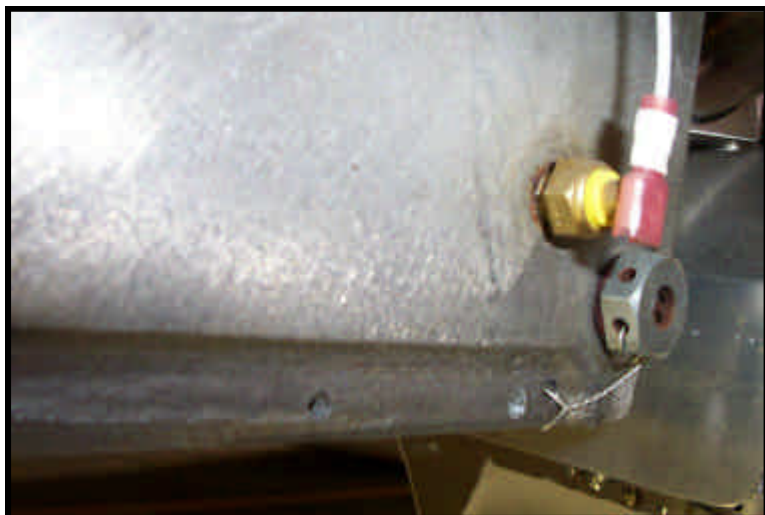
Materials Required:

Procedure:

Cylinder Head Temperature Sensor

The cylinder head temperature sensor used in Jabiru aircraft is a J-type thermocouple located under the rear spark plug of No: 6 cylinder. The VDO 310 980 Cylinder Head Temperature Gauge Kit is installed as standard equipment in the Jabiru Aircraft.

Photo– Position of oil temperature sensor, oil pressure sensor and oil pressure switch

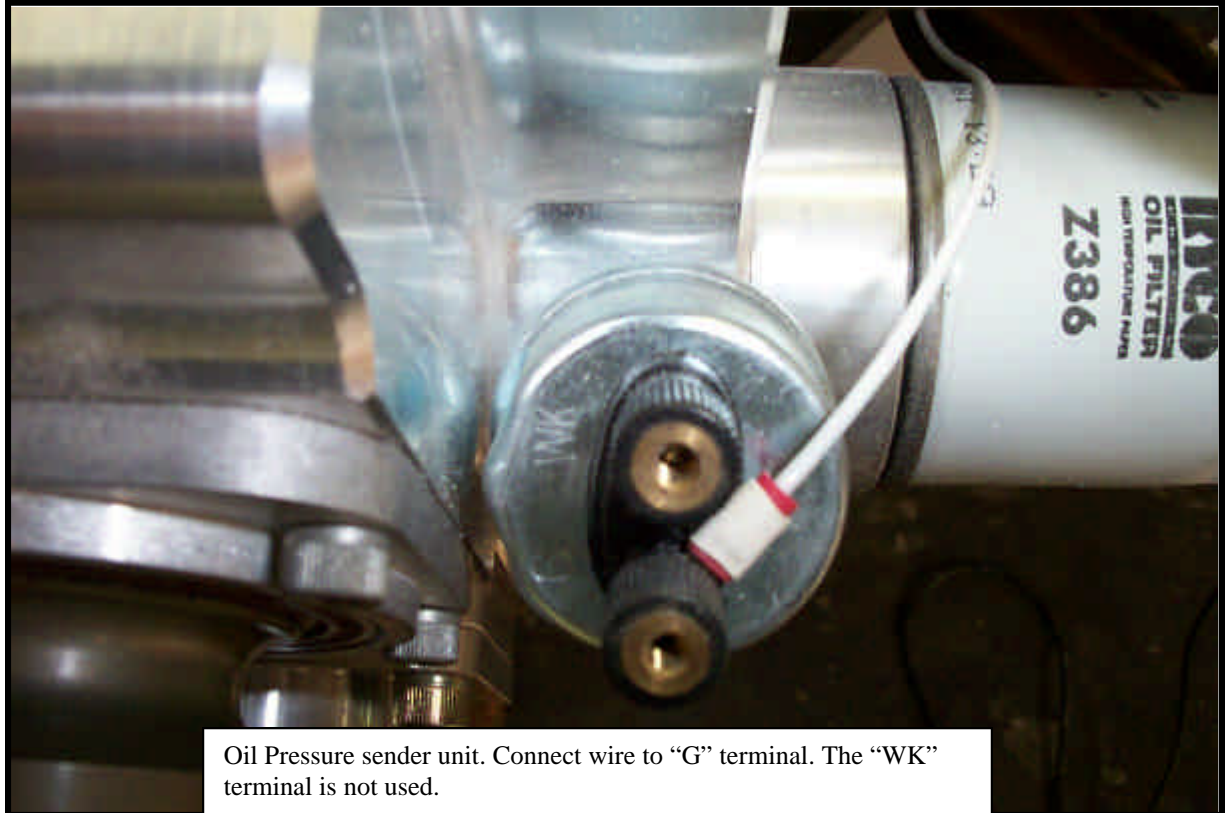


Oil Temperature Sensor

The Oil Temperature Sensor used is a VDO 320 028 which is located in the bottom of the sump as shown in photo

Oil Pressure Sensor

The oil pressure sensor is located at the base of the oil filter and this can be seen in photo. The sensor used is VDO 360 001



Oil Pressure sender unit. Connect wire to “G” terminal. The “WK” terminal is not used.

Exhaust Gas Temperature Probe

The exhaust gas probe used on Jabiru’s is a VDO 310 306 Pyrometer which is supplied as a complete kit. The probe is mounted in an exhaust pipe and as such the mount must be welded on, (*this fitting is not standard*) and this is best done at the time of order although the exhaust pipe may be returned and the fitting added it may take a couple of weeks before the pipe is returned to you.

Magnetic Pick-up Sensor (Tachometer)

The sensor used is a 6.35 x 22 mm analogue magnetic pick-up and is fitted to a bracket on the alternator housing as shown in photo in the engine electrical section.



Tacho sender location