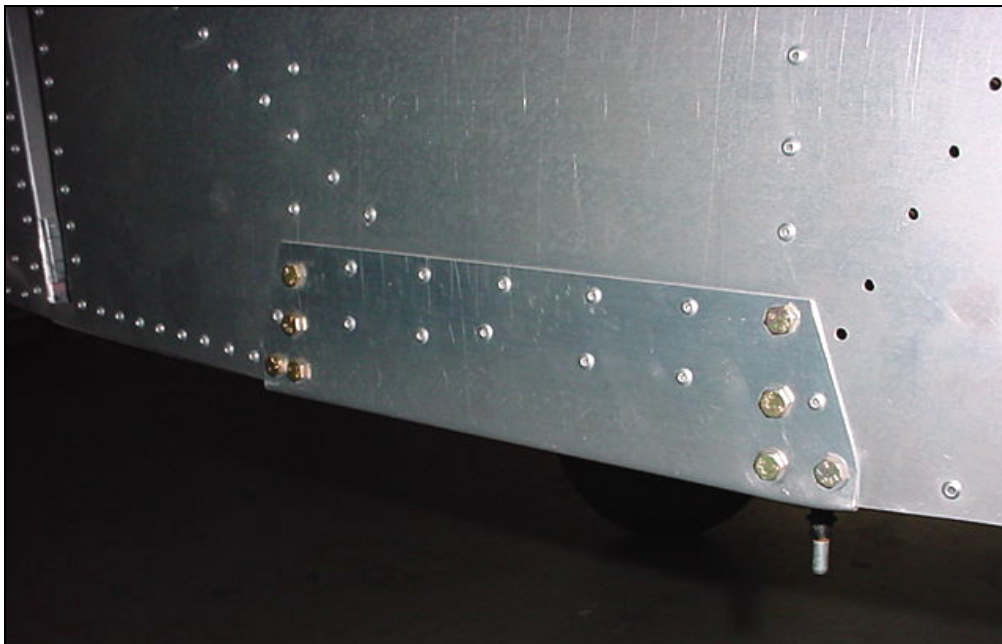


Tail Dragger (TD) or tail wheel configuration

TD configuration (shown with dual stick option and center console).



Ref 6B11-2  
No cutout in the side skin  
6B11-2 for the gear  
channel 6B5-5

When converting tricycle to tail wheel, it is necessary to cover up the cutout with a plate.



**6TD2-1  
BOTTOM LONGERONS  
SPLICE PLATE  
(QTY=2)**

NOTE: Splice not shown in this photo.

Splice Plate 6TD2-1 installed on outside of the bottom skin between the Z stiffener 6B1-7 and the Gear Channel 6B5-5. Trim the outside edge of the Splice plate to match the curvature of the sides of the fuselage.



**6TD2-3  
TD LOWER  
LONGERONS  
(QTY=2)**

(6TD2-3 length =1700 is the Longerons before it is cut into 6TD2-31 and 6TD2-32 to make room for the gear spring 6TD2-7)

Line up the longerons 6TD2-3 underneath the lower engine mount fitting 6TD2-8 at the front and with the inboard edge of the Splice plate 6TD2-1 at the rear.

Bend the Longerons 6TD2-3 between the front and rear flange of the gear channel 6B5-5. Avoid adding too much bend in one area, make numerous bends to make a smooth transition from the rear skin to the cabin floor skin.



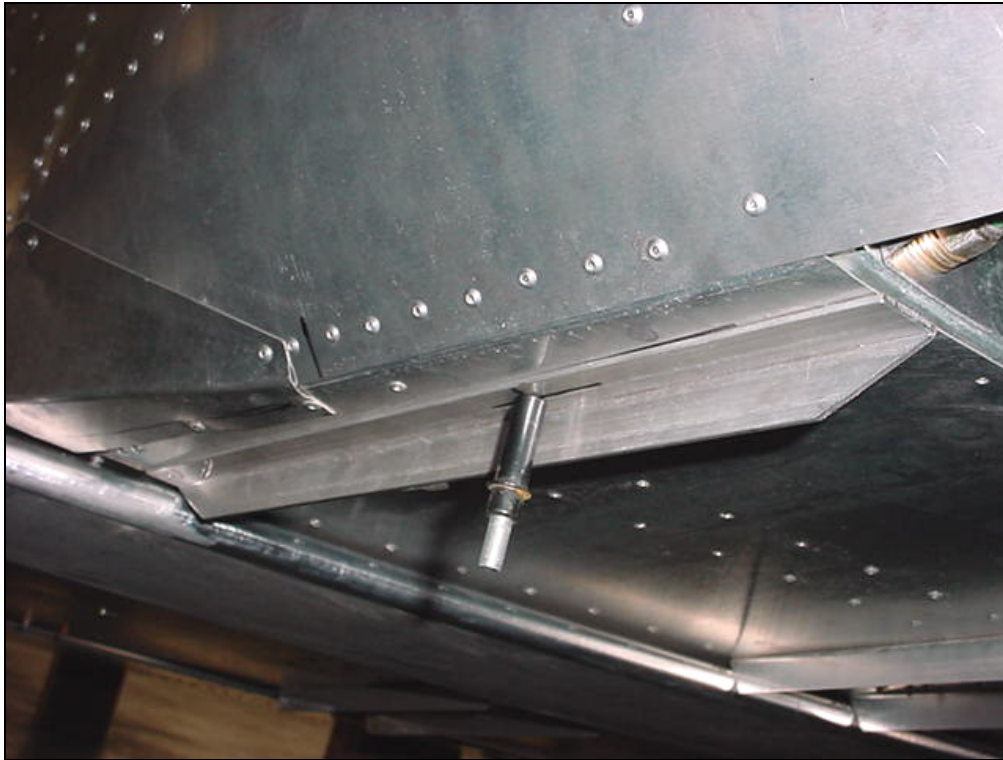
ORIENTATION: Vertical flange is inboard.



**6TD2-32  
TD LOWER REAR  
LONGERONS**

Layout the rivet line through the center of the extrusion, mark the intersection holes with the gear channel 6B5-5, the front and rear flange through the center wing spar 6-W-4 and the TD heel support 6TD1-7. Layout the rivet spacing between the intersection holes. Also plan for the location of the rudder pedals 6B9-5.

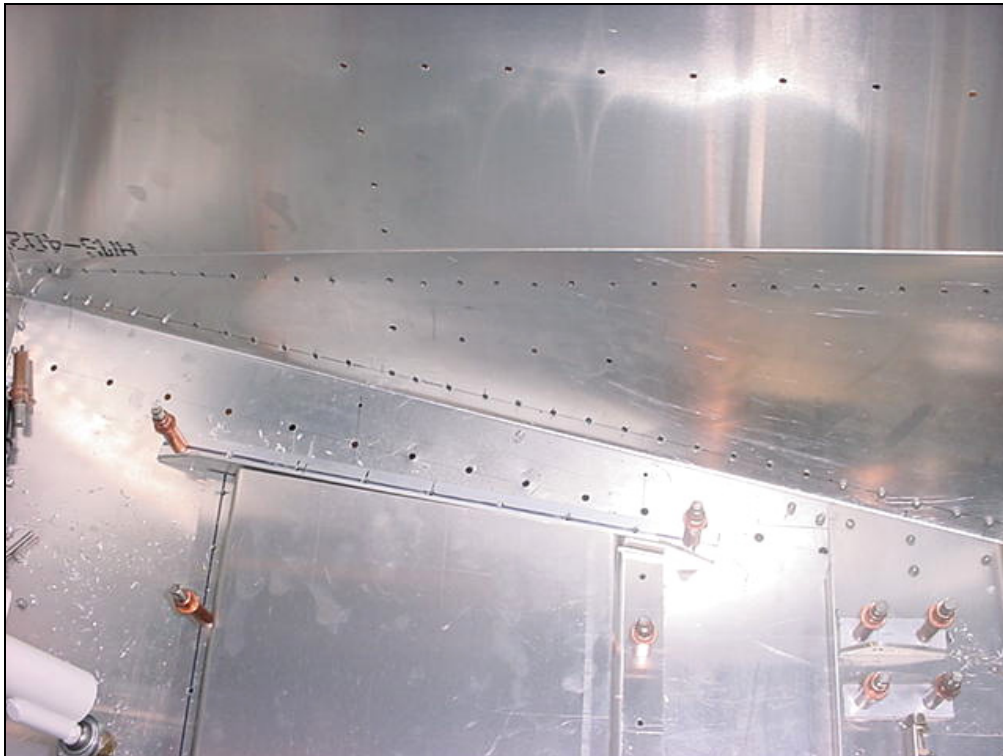
**A5 PITCH 40**



Locate the rivet through the front and rear flange of the TD Heel Support 6TD1-7

Drill and Cleco pilot holes for the AN3 bolts in the longeron and cabin floor skin on the front and aft side of the gear.

From the reference line for the width of the gear, mark a line 5mm on the front side and another line 5mm on the aft side of the gear. Check: 205mm between the two lines. Locate the holes for the AN3 bolts



**6TD2-2**  
**TD LOWER TOP**  
**LONGERONS**

**A5 PTICH 30**  
6TD2-2 into 6B10-1  
(between the AN3 bolts)

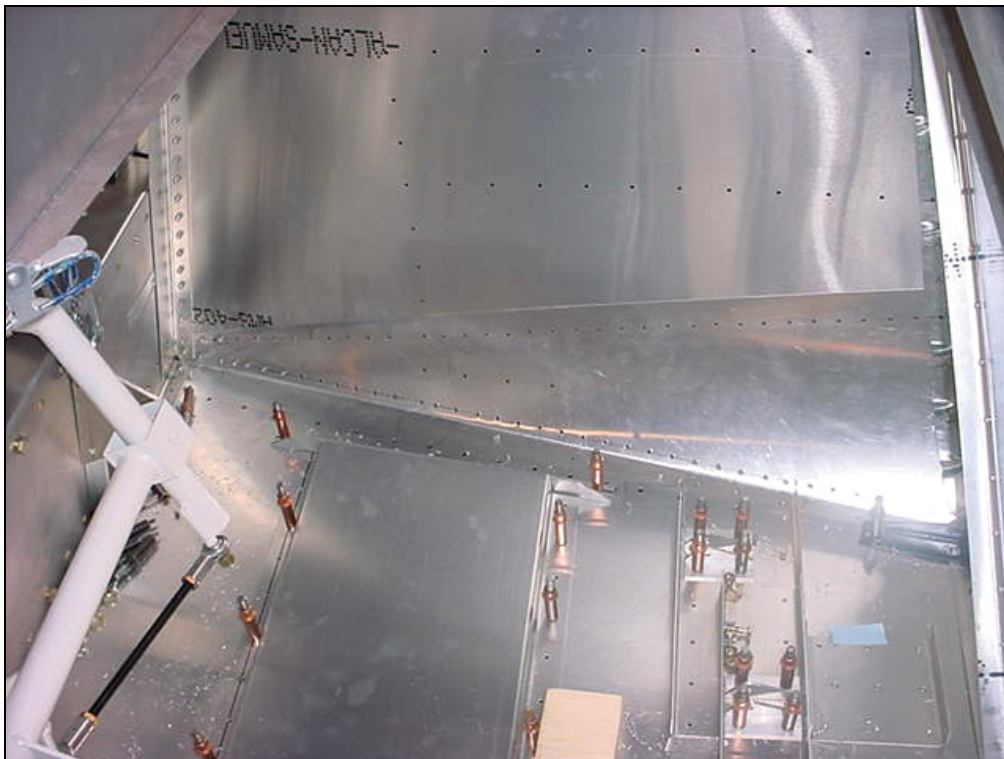
Use the pilot holes for the AN3 bolts to locate the Top Longerons 6TD2-2



**6TD1-7  
TD HEEL SUPPORT**

**A5 PITCH 30**  
(Front & rear flange of  
6TD1-7 to Cabin Floor  
6B10-1)

Trim the ends of the TD heel support to fit between the left and right TD Lower Top Longerons 6TD2-2



Position the Pedal  
Bearing Channel 6B8-3,  
6B8-4 and 6B8-5

Inside view of cabin floor skin



**6TD2-31  
TD LOWER FRONT  
LONGERON**

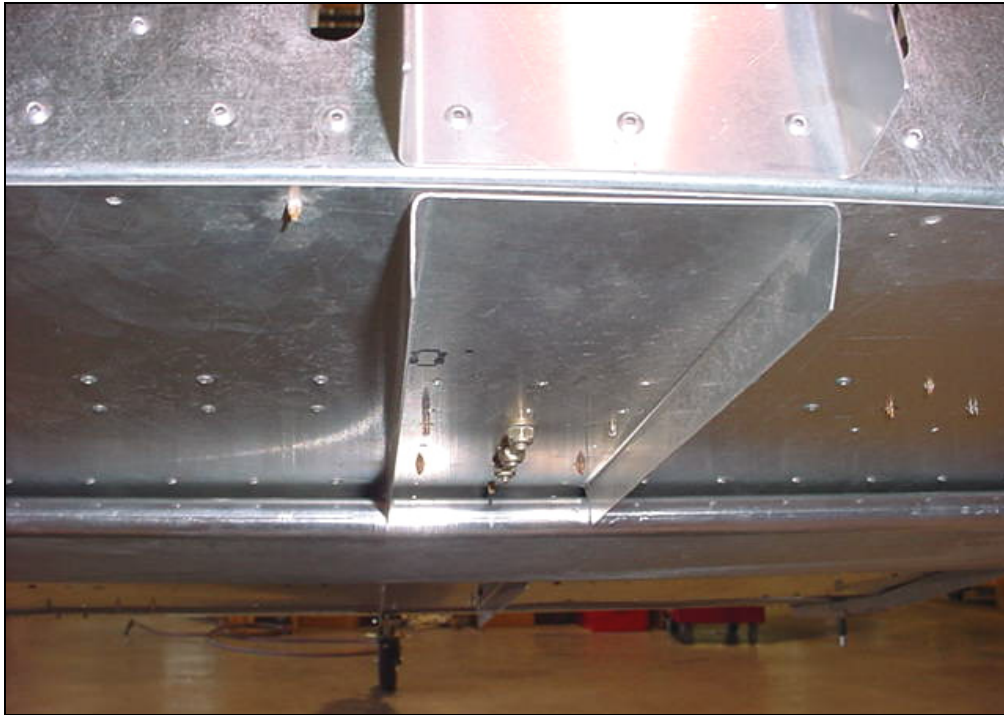
Cut the Longerons 6TD2-3 approximately 3 to 4mm forward and rear of the reference line for the width of the rear.



**6TD2-32  
TD LOWER REAR  
LONGERONS**

Cut the side flange of the Floor stiffener 6B10-2 to make room for the Gear.

Trim the ends of the Longerons (vertical flange is chamfered 30mm)



On the TD the Lower Bearing Support 6B8-9 is not installed. Finish drilling the front of the Channel 6B10-2 to the bottom of the firewall through the bottom flange of the Firewall Bottom Stiffener 6B601

**3 RIVETS A5**



**6TD2-4  
FUSELAGE BOTTOM  
SKIN**

**A5 PITCH 30**

(photo shown with tricycle gear firewall installation 6-B-7 instead of 6-TD-2)

Add 6TD2-4 to close the gap between the rear fuselage 6B1-4 and the cabin floor 6B10-1



**6TD2-5  
TD FRONT FIREWALL  
TOP STIFFENER  
(QTY=1)**

**A5 PITCH 30  
(6TD2-5, 6B6-2, 6B7-2)**



**6TD2-6  
TD CENTER FIREWALL  
STIFFENER (QTY=1)**

**A4 PITCH 40**