

Zodiac XL – TD Option

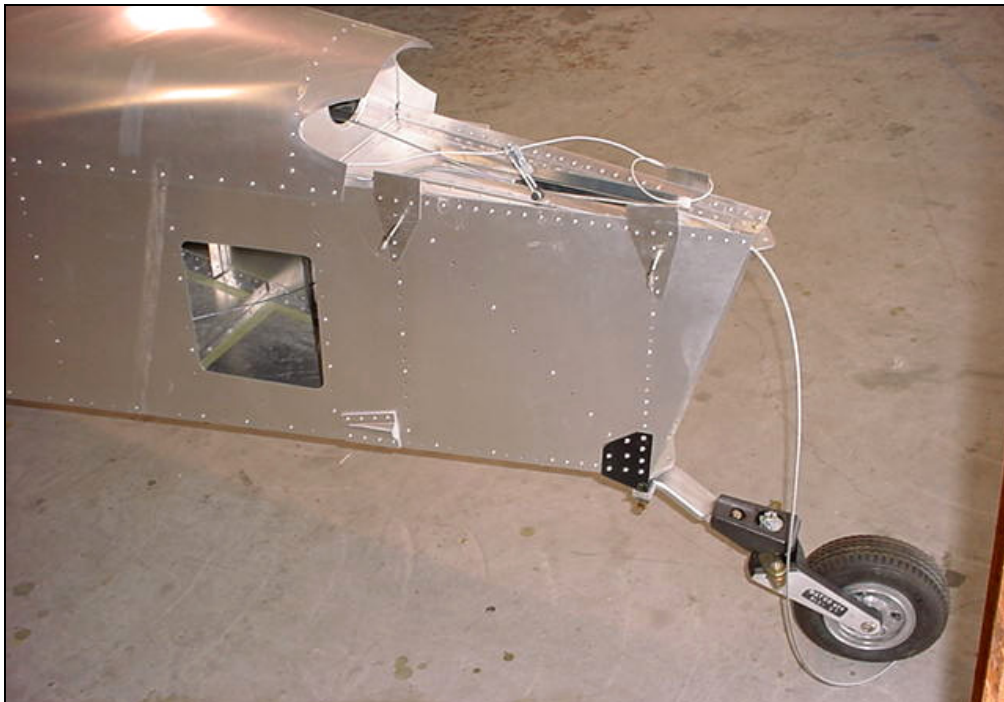
Ref drawing (3 pages):

**6-TD-1**

**6-TD-2**

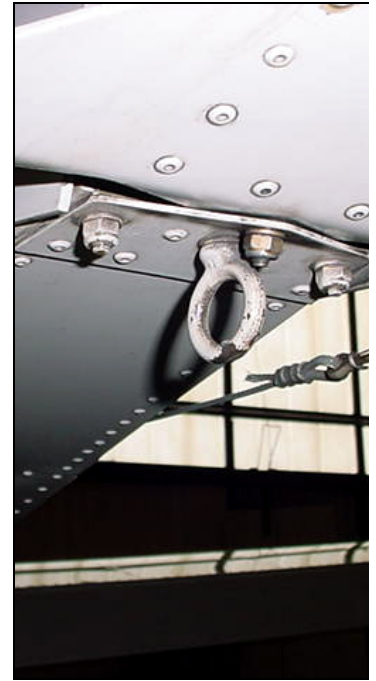
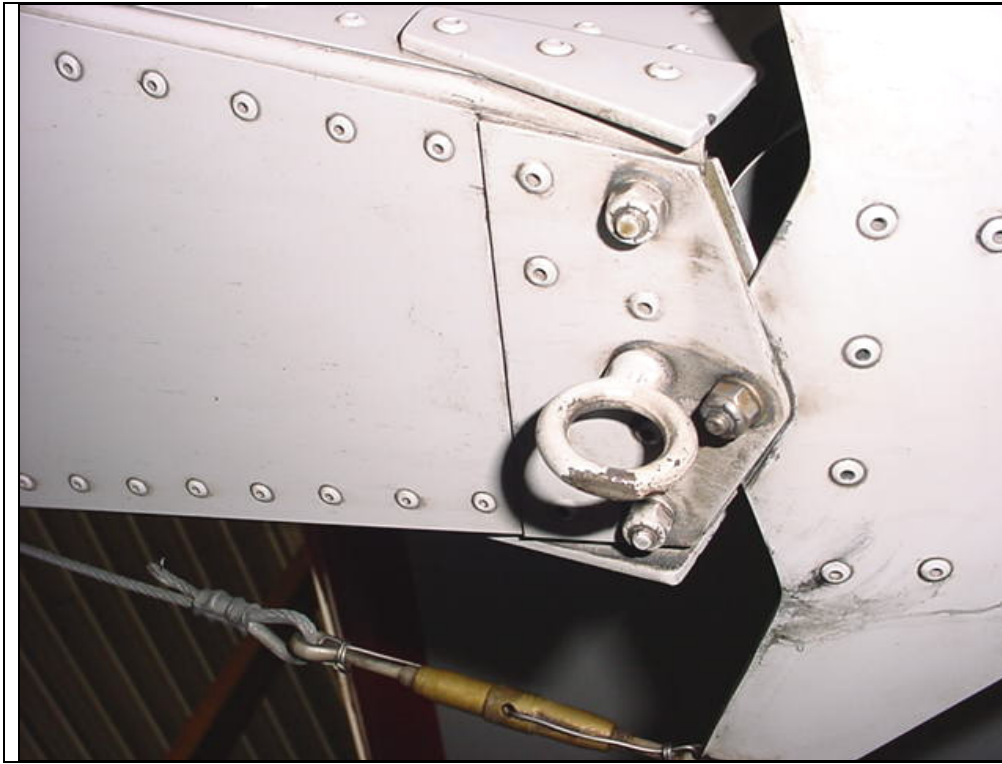
**6-TD-3**

TD = tail dragger



Tail spring underneath fuselage between the front and rear HT frames

The rudder stops shown on drawing 6-S-5 are replaced by the Pick Up assembly



NOTE: No changes to the rudder attachment.

6B4-2 Tie down ring on tricycle gear. Do not install the tie down ring for the TD.



The two AN3 bolts are replaced with two AN4 bolts through the pick up assembly.

When converting a tricycle to a TD, the middle bolt is where the tie down ring used to be. Middle bolt is not required for the TD.





**6TD1-1  
TAIL SPRING REAR  
PICK UP**

Drill oversize holes in the shim to make room for the 3 middle rivet head. Position the shim underneath the fuselage. Install the pick up against the shim.

Line up the aft edge even with the back of the fuselage.

**3 RIVETS A5** through Rear HT frame

**3 RIVETS A5** through Longeron

**2 RIVET A5** through diagonal L angle

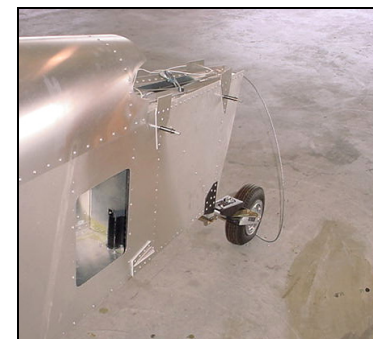
**2 RIVETS A5** in side skin, in front and behind the diagonal L angle.



Drill & cleco left and right side.



**6TD1-2  
TAIL SPRING  
FORWARD PICK UP**



**CUTOUT:** Cut a hole in the bottom skin to insert the pick up from the underside of the fuselage.

The Pick up is installed on the front side of the Front HT frame 6B1-1

**NOTE:** If the pick up is installed before the top skins are installed, it is not necessary to install the Battery Access Panel (unless the 0235 Lycoming is the engine of choice).

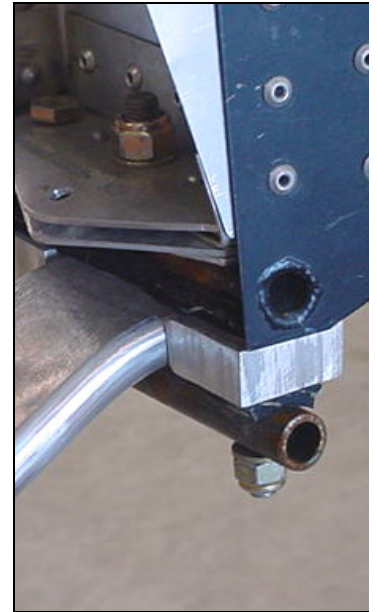


Photo looking up towards the rear.

**3 RIVETS A5** through HT frame  
**5 RIVETS A5** in bottom skin

**4 RIVETS A5** on each side of the Pickup



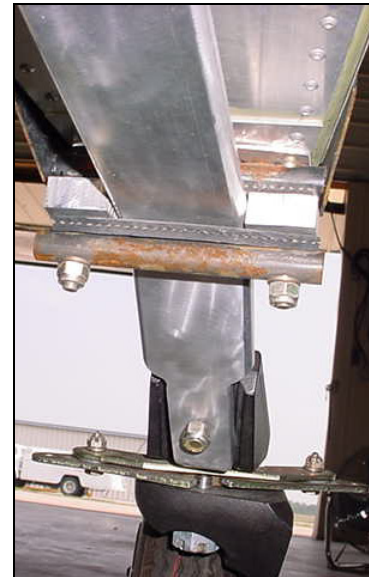
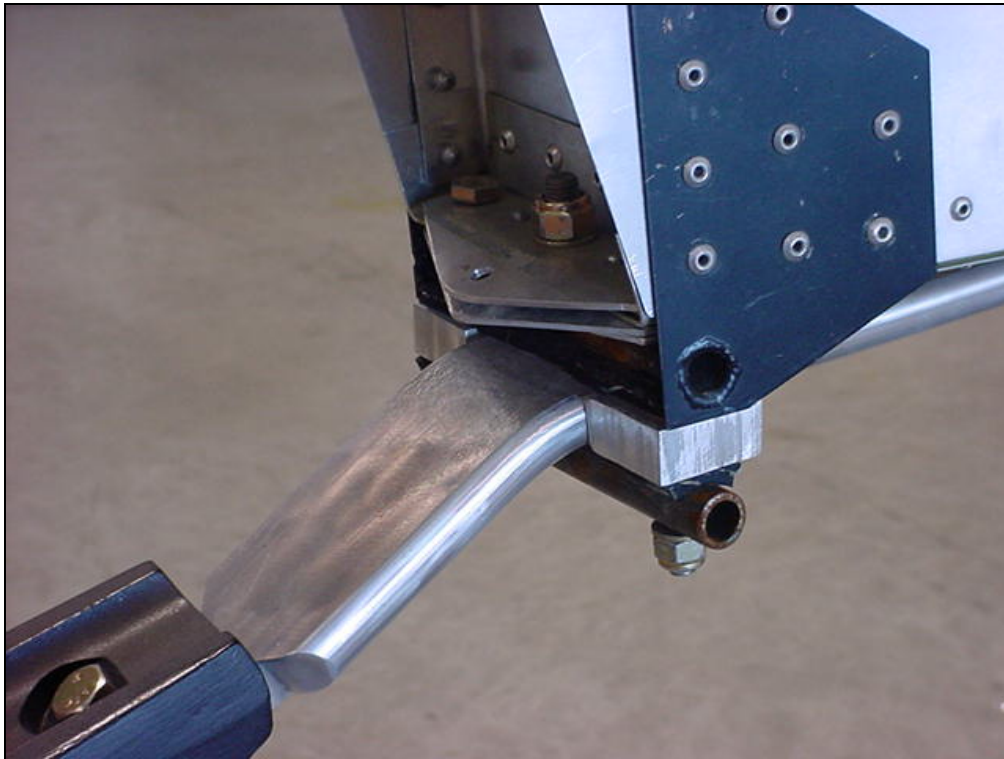


**6TD1-4 REAR PICK UP SPACER (QTY=2)**

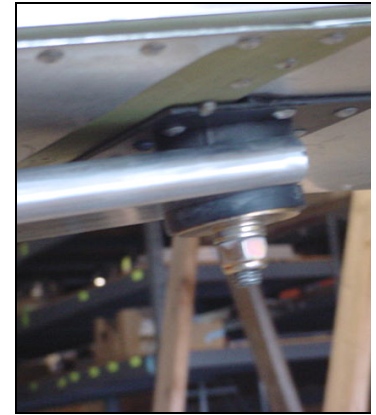
Spacers to center the spring.

**AN4-25 BOLTS (QTY=2)**

**RUBBER** above and below the tail spring, cut to fit between the left and right Rear Pick Up Spacer 6TD1-4



**6TD1-6 REAR PICK UP TUBE. (QTY=1)**



**25-4163  
RUBBER SPACERS  
(QTY=2)**

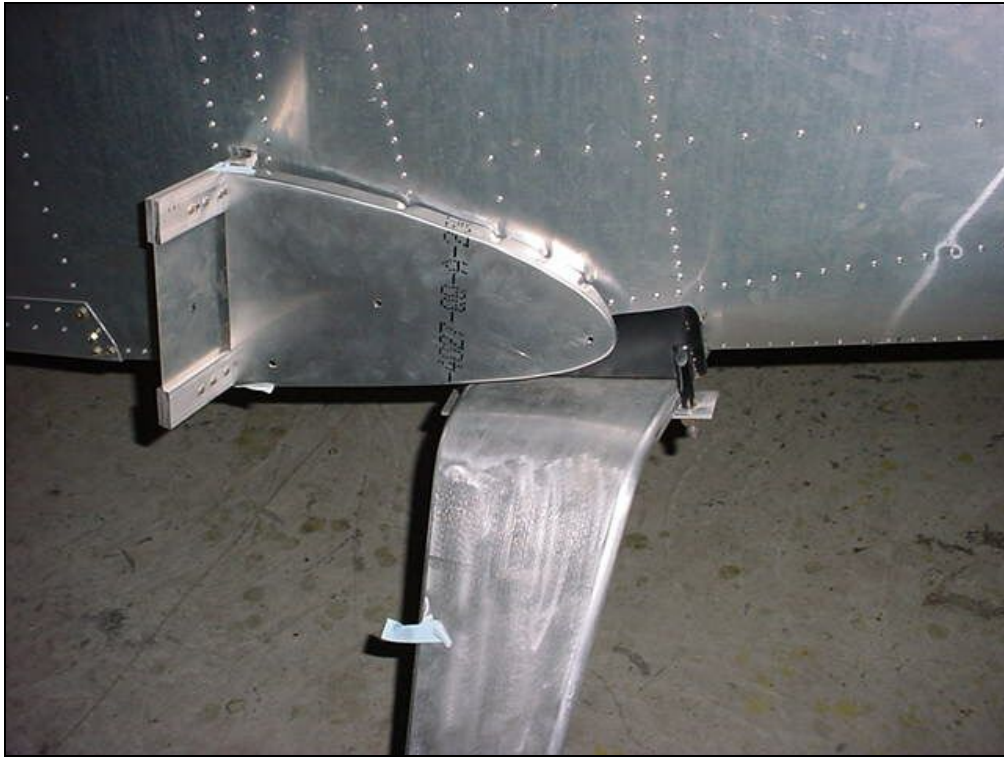
**AN970-5  
PENNY WASHER  
(QTY=1)**

**AN365-524  
SL NUT  
(QTY=1)**



If necessary, it is acceptable to add 5/16" washers between the nut and the penny washer





Location of gear forward of center spar section.

The front of the gear is approximately 35mm forward of the leading edge.



CHECK: the gear is square (90 degrees) to the fuselage center line.

Position the TD Main Gear Spring against the Cabin Floor Skin 6B10-1  
Trace a reference line along the front and aft edge of the Gear on the Floor Skin. The TD Heal Support 6TD1-7 is centered over the gear,