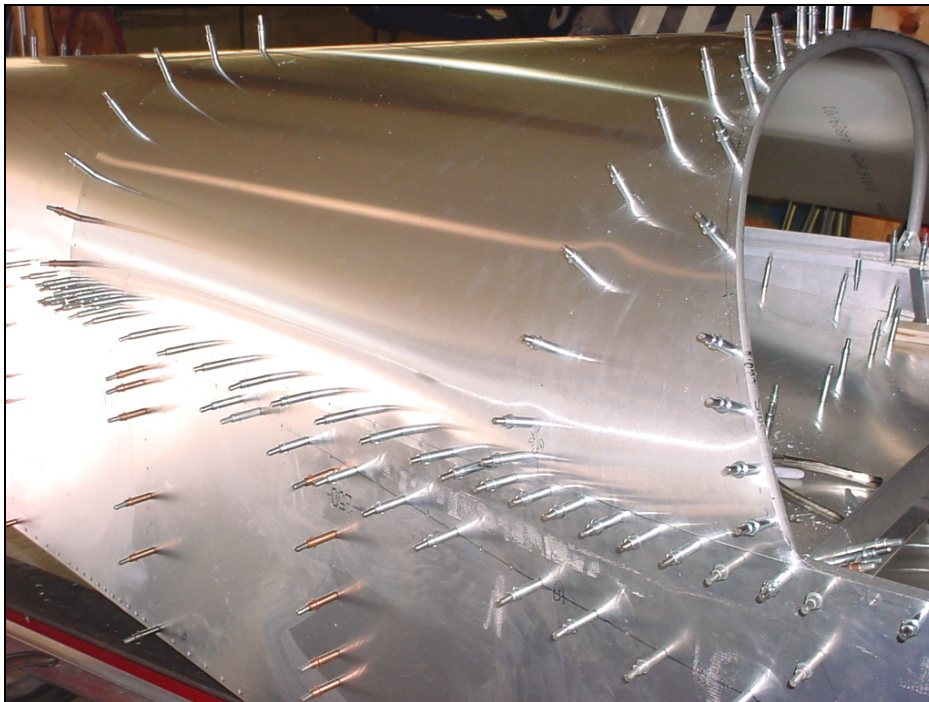


Overlap the side skin 6B11-2 on top of the middle top skin 6B21-7



Compound curve: The rear just behind the side skins is where the top skin tends to bulge out.



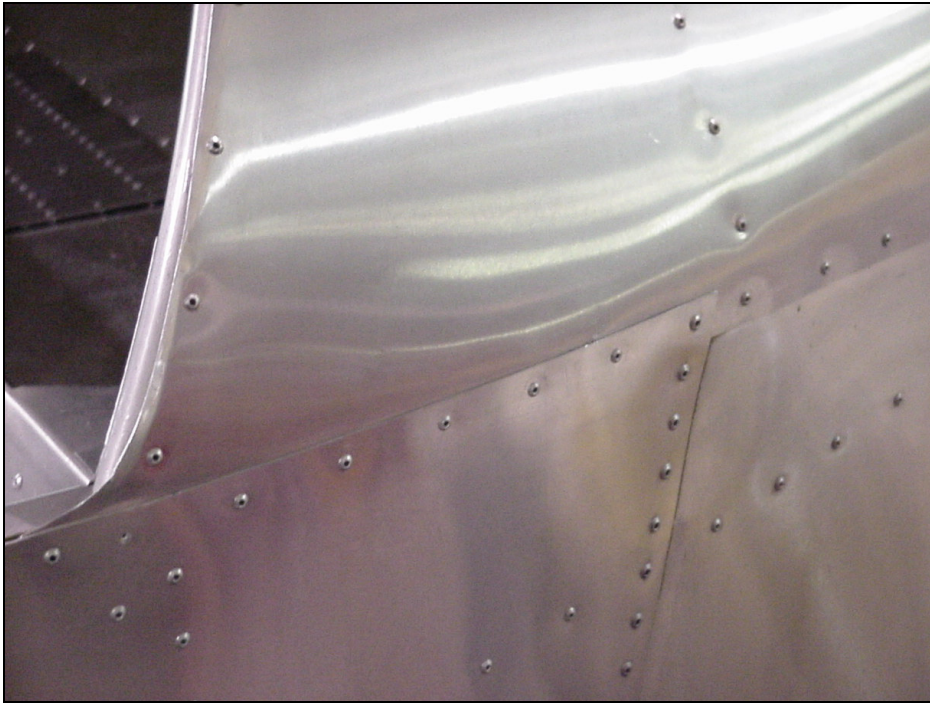
Layout the rivet line through the longeron 6B11-1

SUGGESTION: From inside the baggage compartment, locate the middle of the Longeron and drill 3 holes (front, middle and rear). From the outside, connect the 3 holes with a straight line. Finish drilling from the outside.

4A PITCH 40

Drill and Cleco starting in the middle.

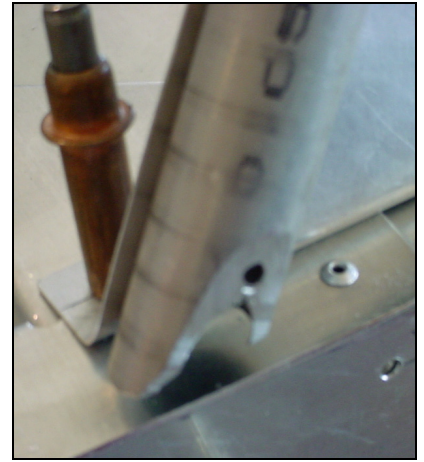
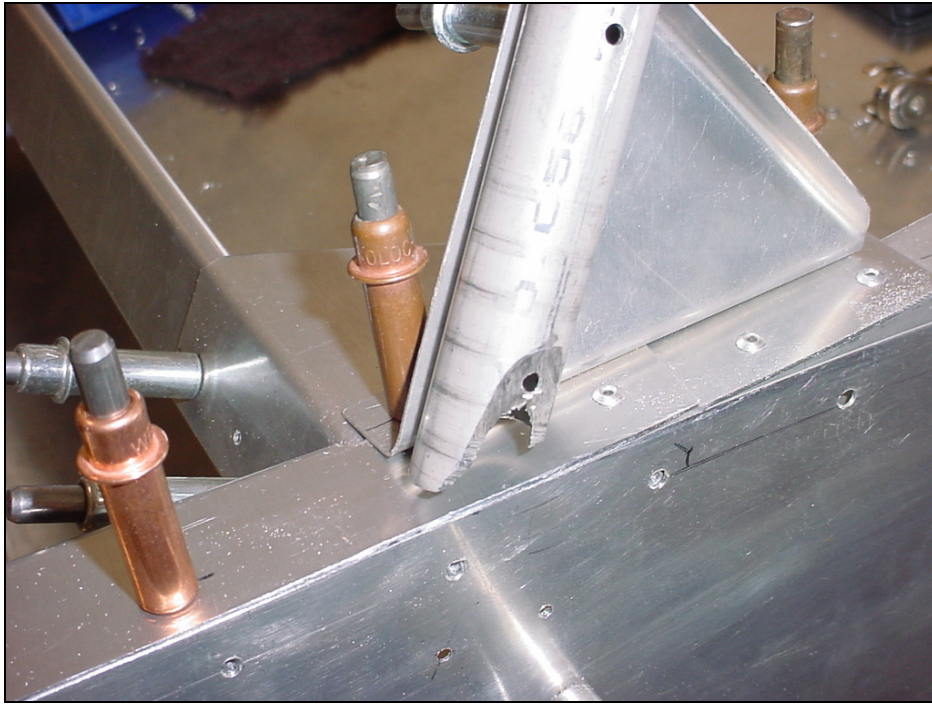
OBSERVATION: First drill the top skin to the longeron, then drill the skin to the first tube frame. Look ahead to see how the tube will fit the skin.



Minimum bulging or bulking of skin between rivets.

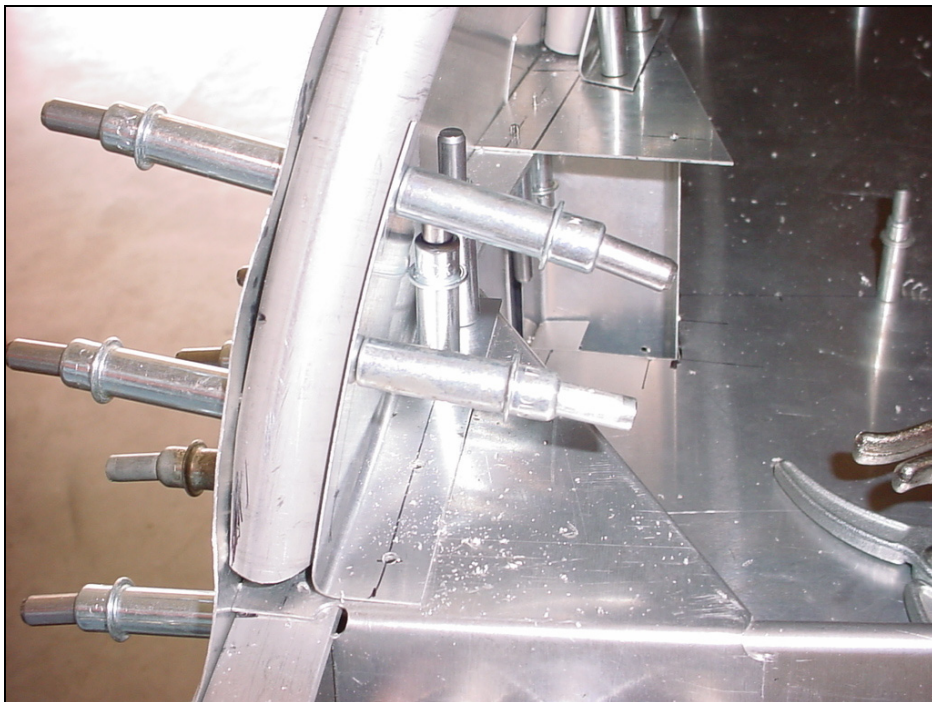


Adjust the tube frame to fit inside the skin.



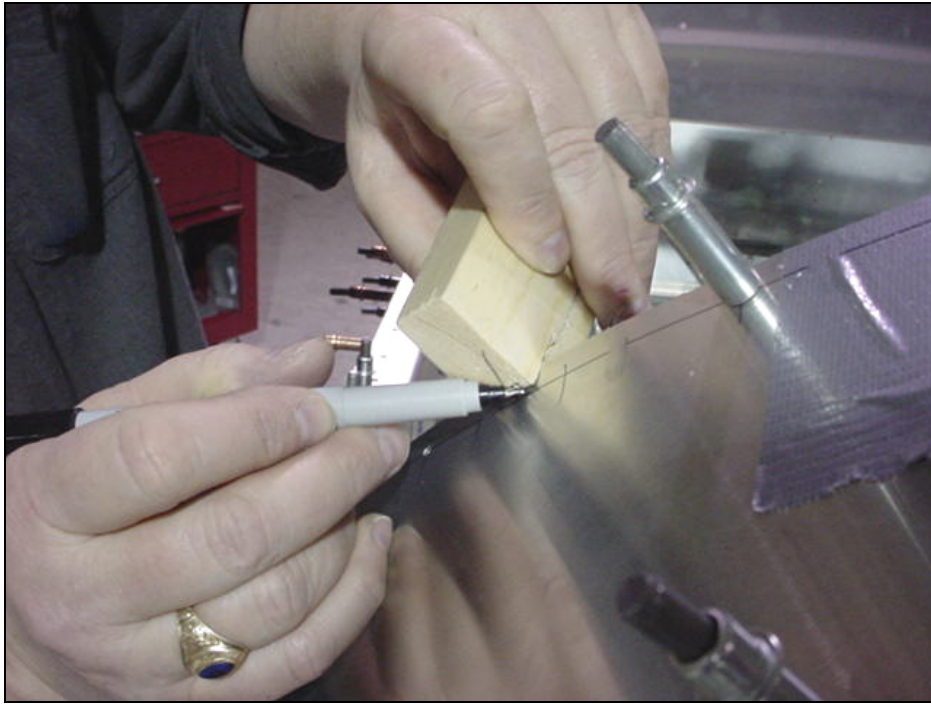
Detail with the skin removed.

To minimize re-bending the tub, the outboard side of the tube can be sawed off to obtain a good fit with the skin.



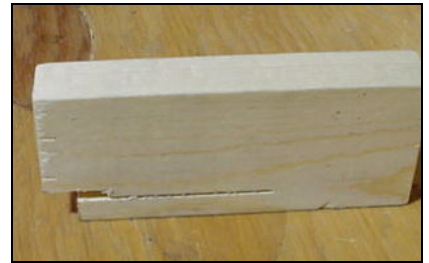
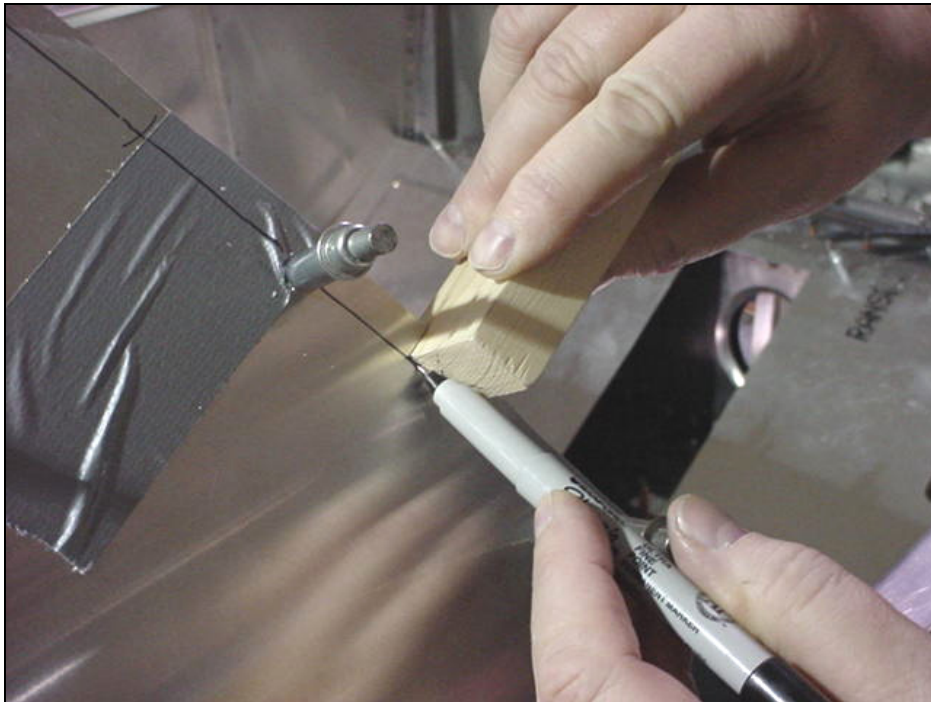
Other than the middle hole, avoid making adjust to the curvature of the tube frame once holes been drilled (for the skin).

Check there is no gap between the tube and the skin.



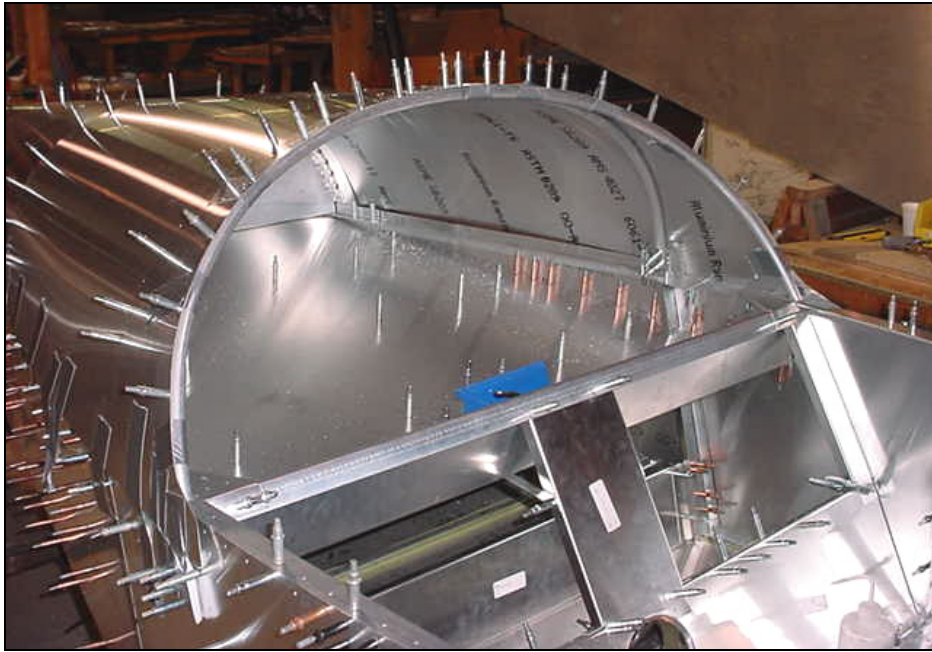
Marking template: wood block with a slot (the skin rides inside the slot), to mark the center of the top on the topside of the skin.

Marking the rivet line along the front edge of the Middle Top Skin 6B21-7 through the middle of the Tube Frame 6B21-1.

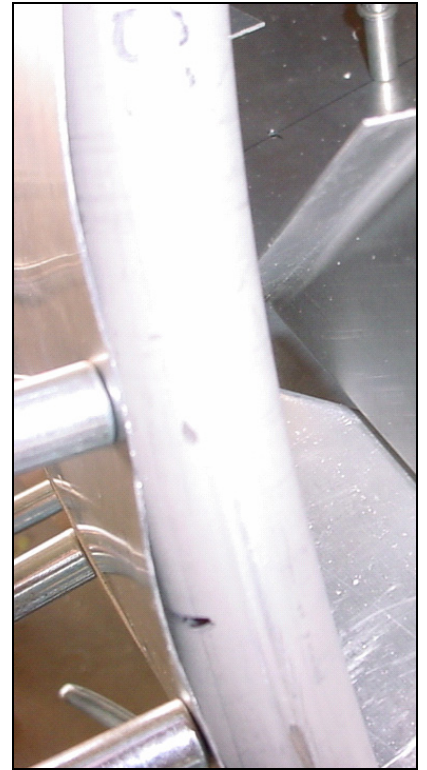


Another view of the plywood template

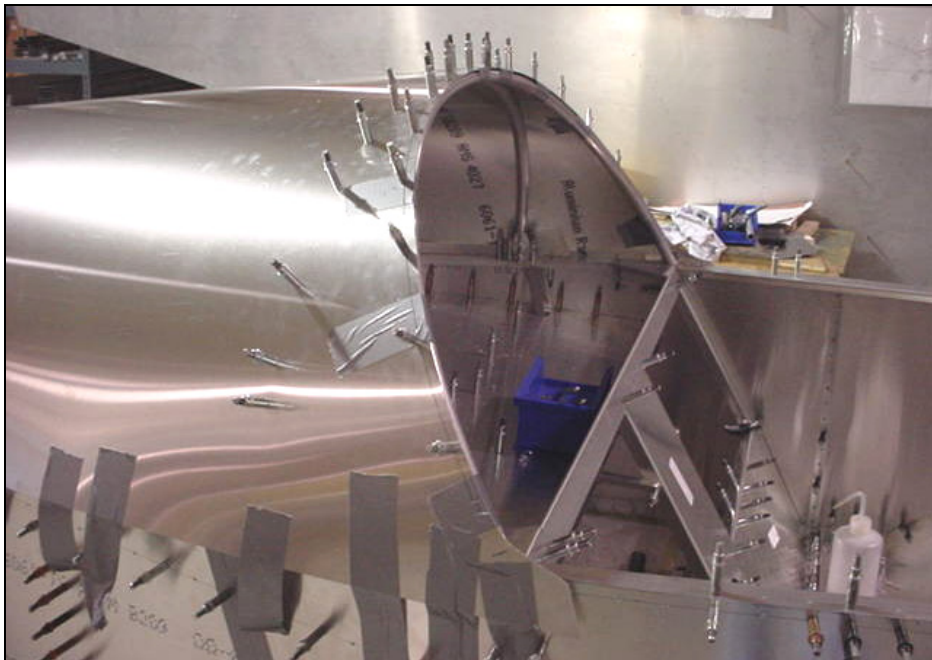
Marking the rivet line using the plywood template (front edge of 6B21-7)



Drill & cleco the front edge of the Middle Top Skin 6B21-7 to the Tube Frame 6B21-1.



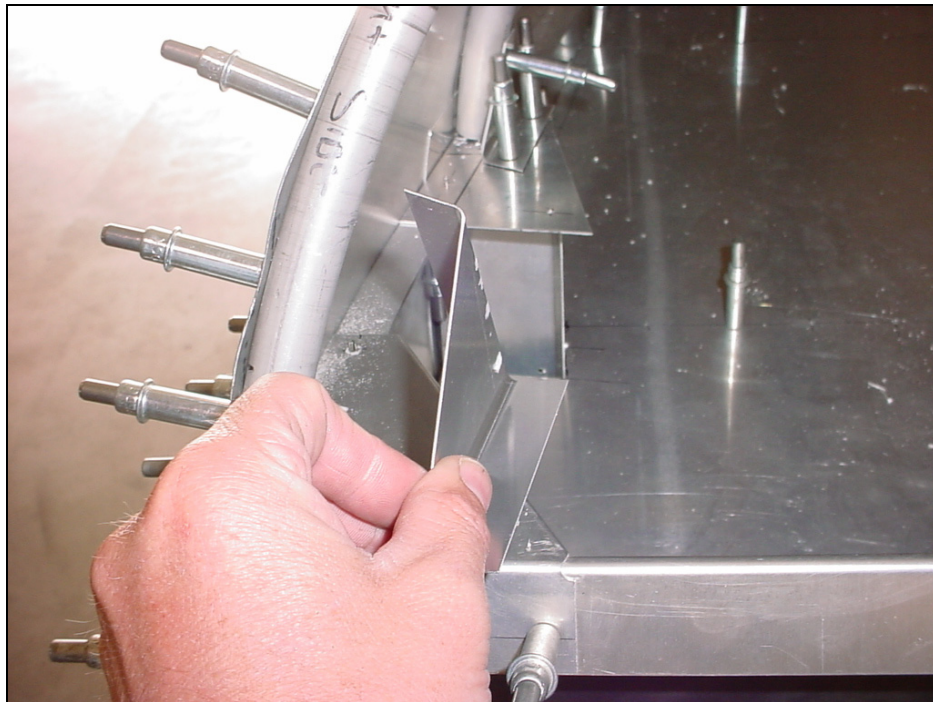
The small amount of bulging between the rivets will come out when the edge of the skin is rolled over the tube.



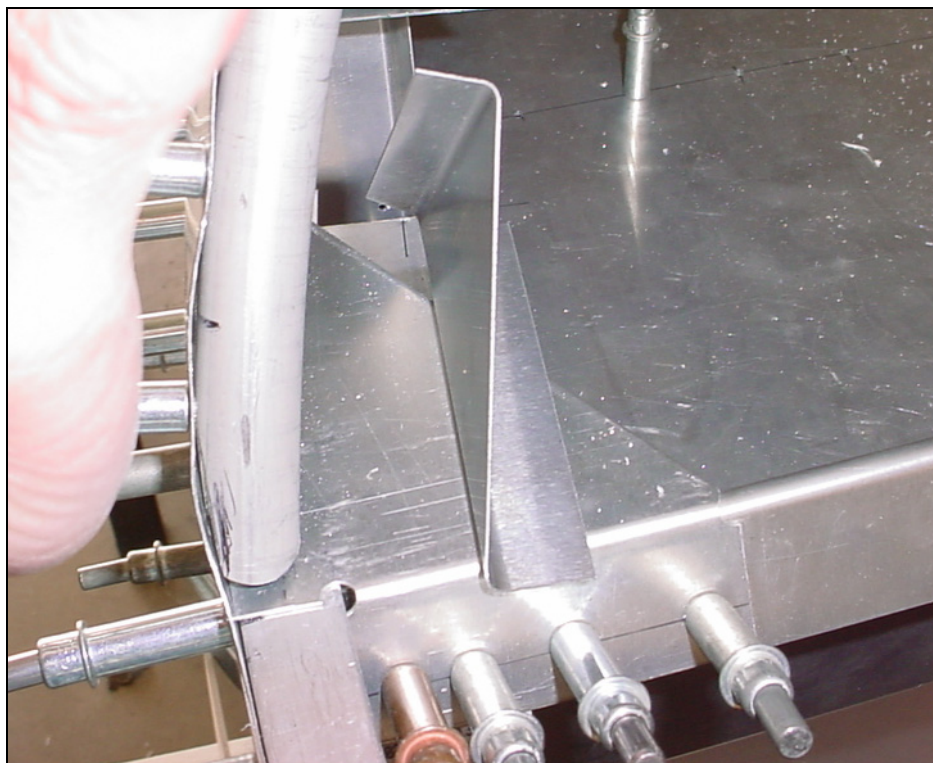
A4 PITCH 50
6B21-7 to 6B21-1

Note: drilling the longeron rivet line before the tube frame will make the compound curve less visible.

**GUSSET
6B21-6**



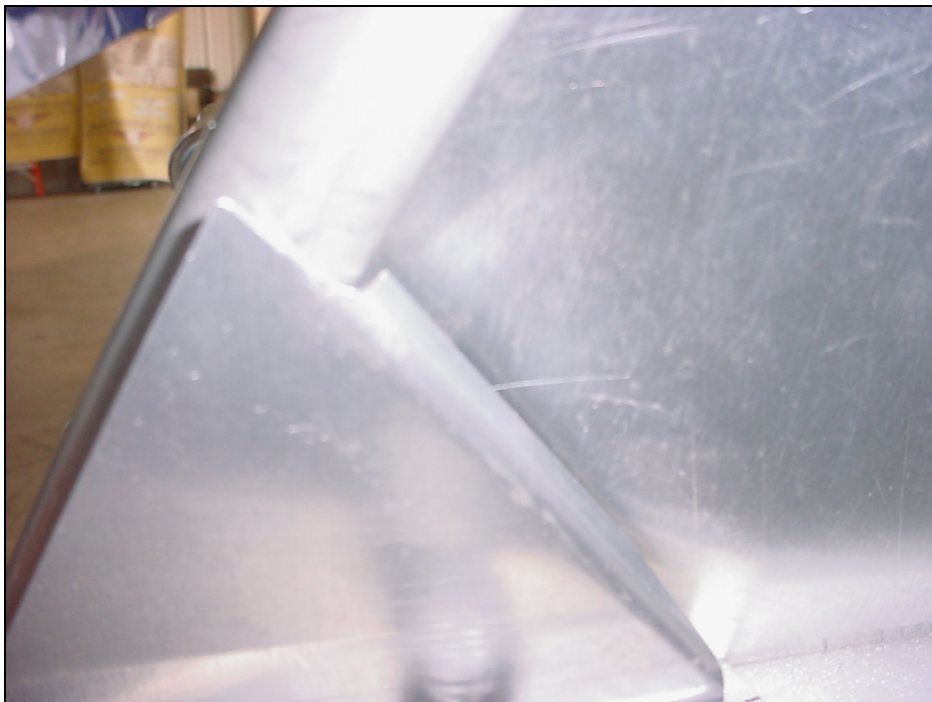
ORIENTATION: The short flange points outboard. The Side with no flange is the front.



The top front corner of the short flange must be cutout to make room for the tube.

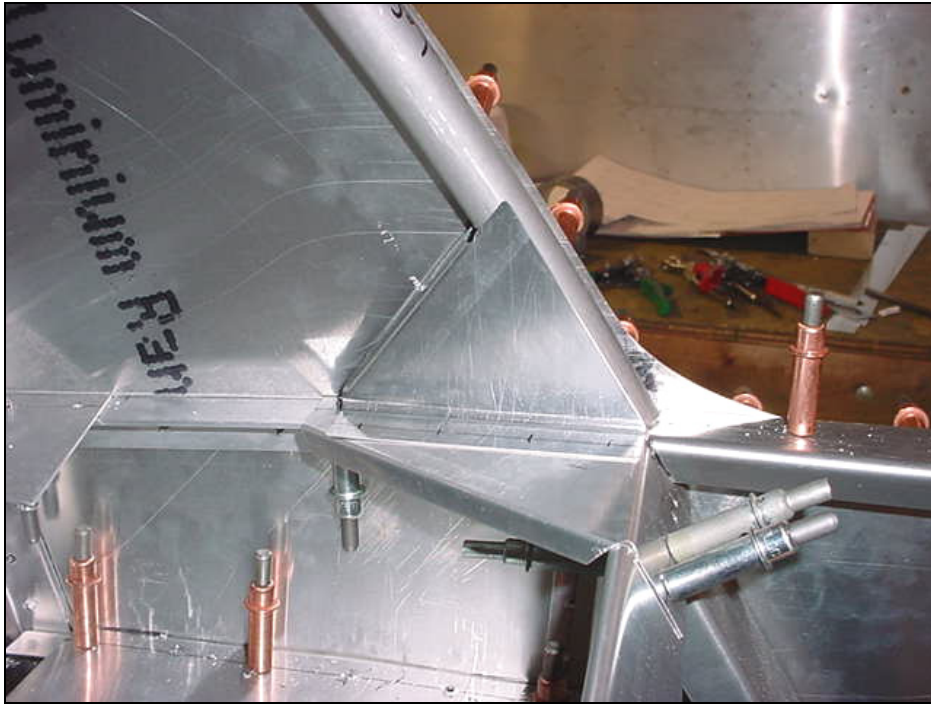


Top flange before it is trimmed.

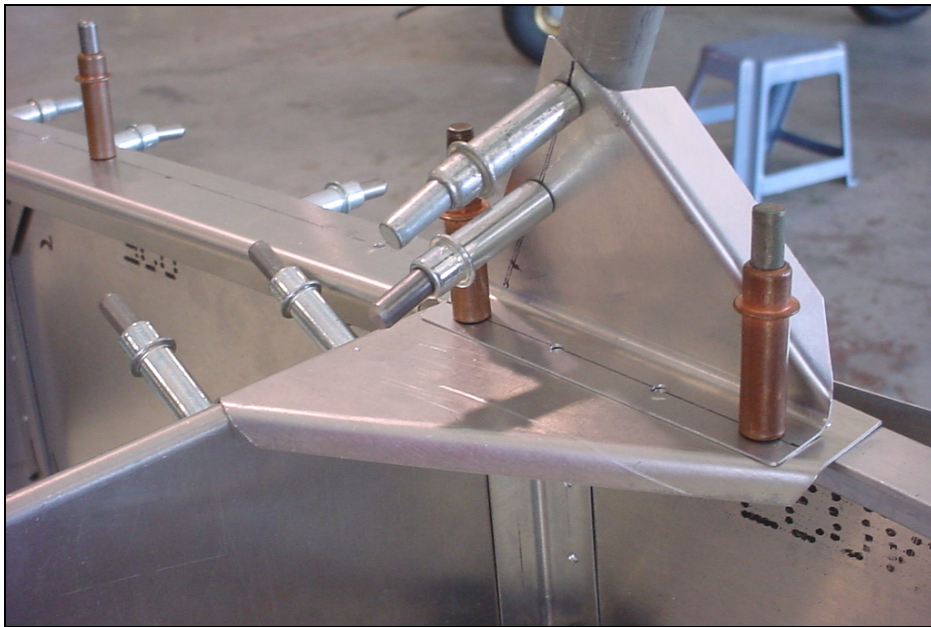


Cutout

Side view of right side.



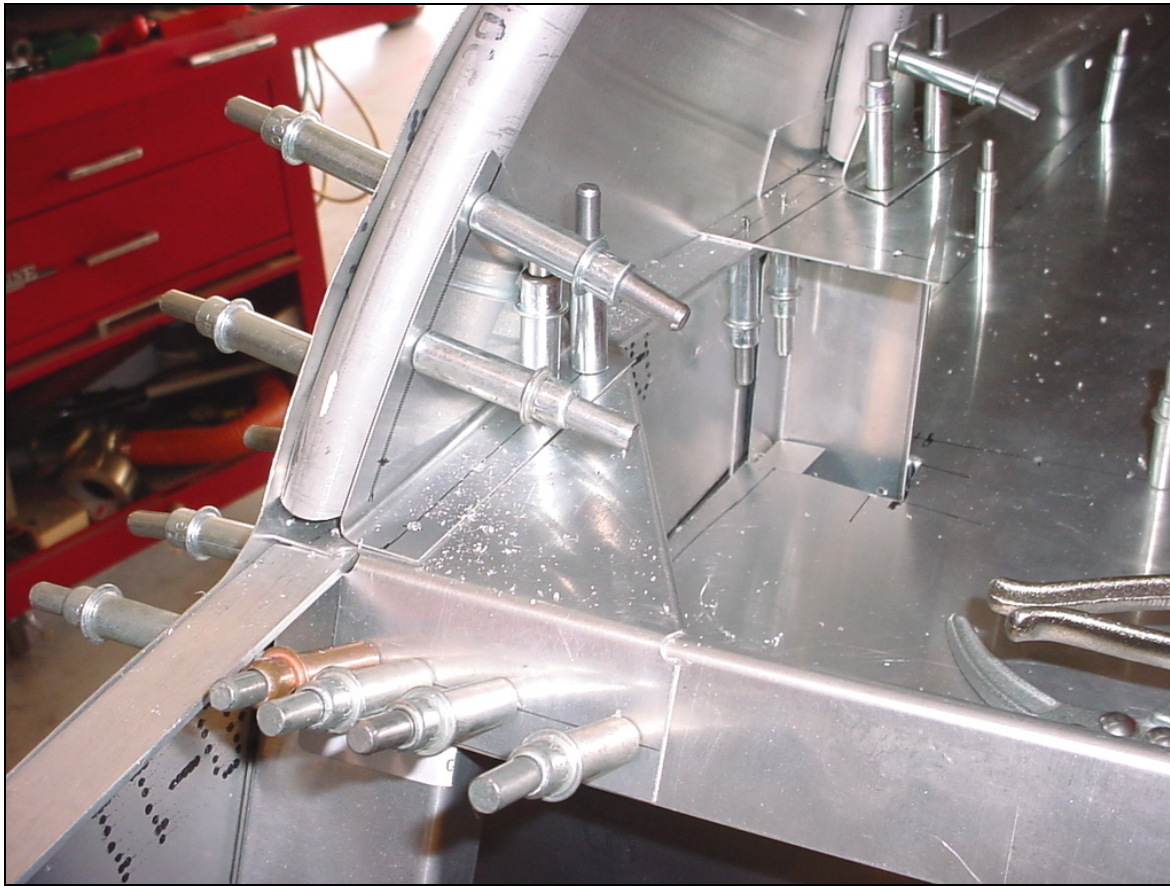
Left side

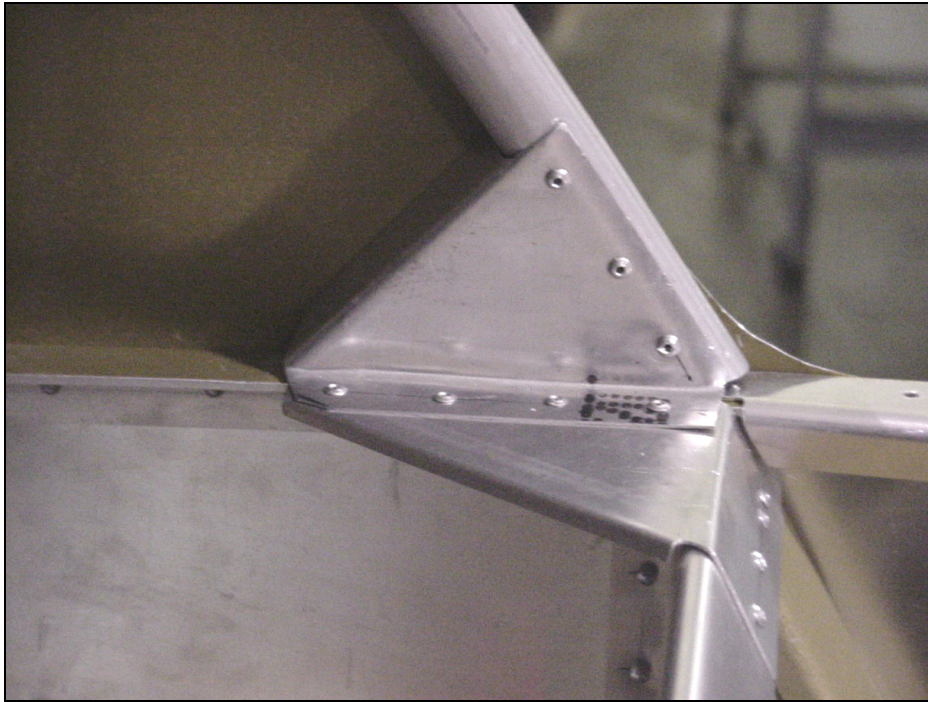


Rear view of right side



Push the gusset against the tube. Clamp in place.

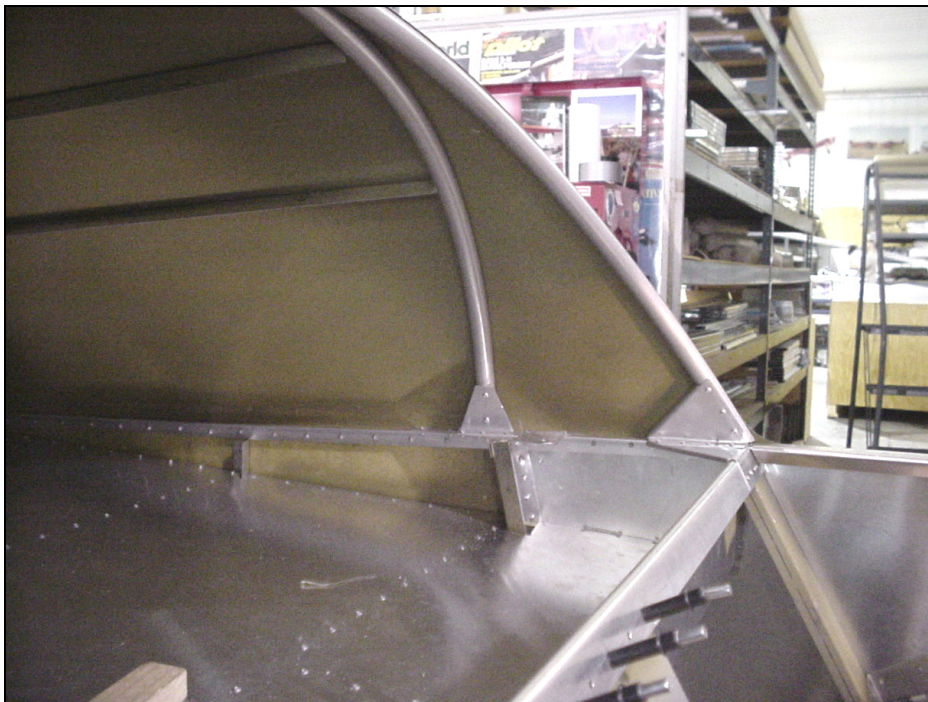




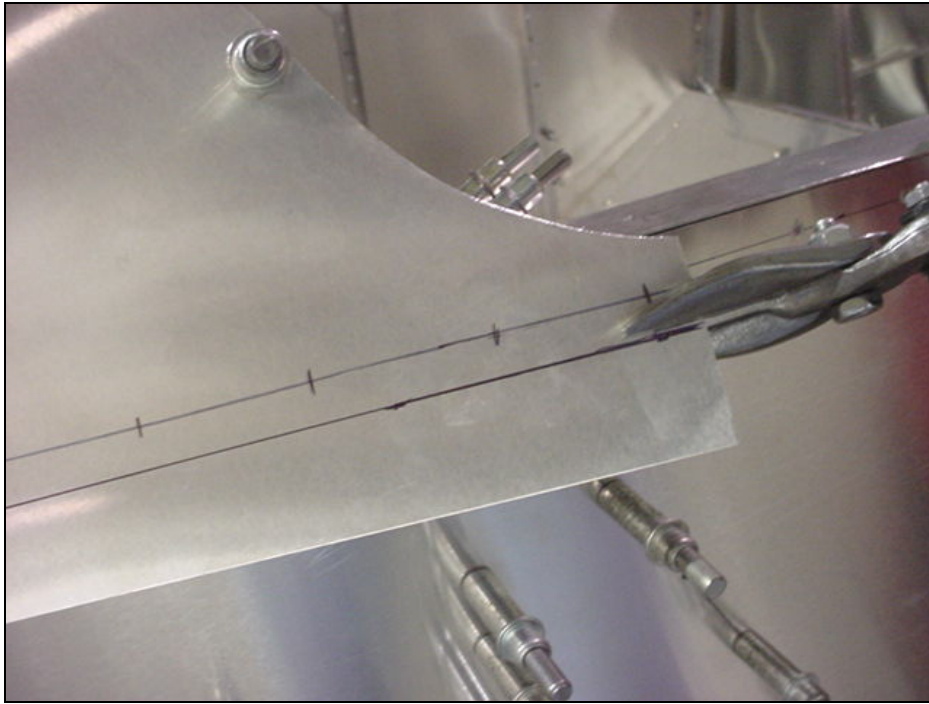
4 RIVETS A4
6B21-8 into 6B15-1

3 RIVETS A4
6B21-8 into 6B21-1

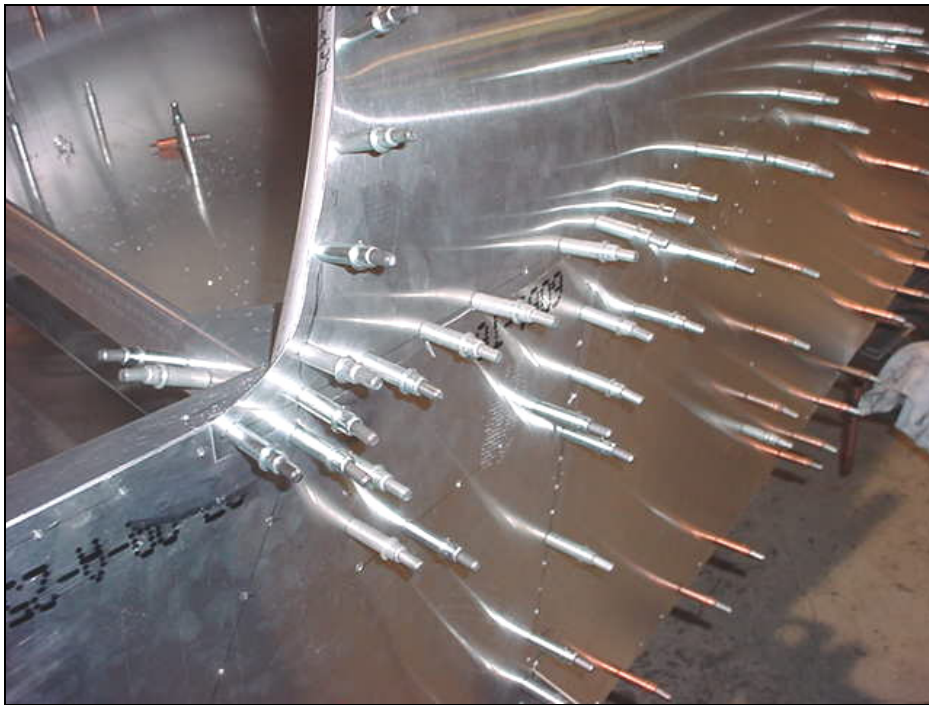
Bevel the front edge of the Gusset to wrap around the tube frame.



Gussets at the bottom of the tube frames.



Trim the bottom edge of the skin.



Overlap: In general, the overlap will be smoother when the front skin overlap the top skin.



Roll the edge of the skin over the tube.



Top view left side



Wait to bevel the front edge until after the skin is riveted.



Top view of right side.
It is normal to have a small amount of buckling between the rivets.