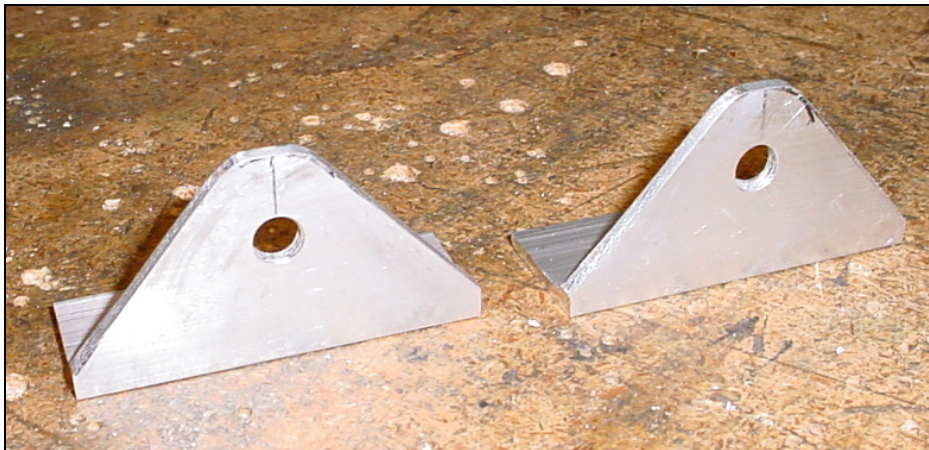


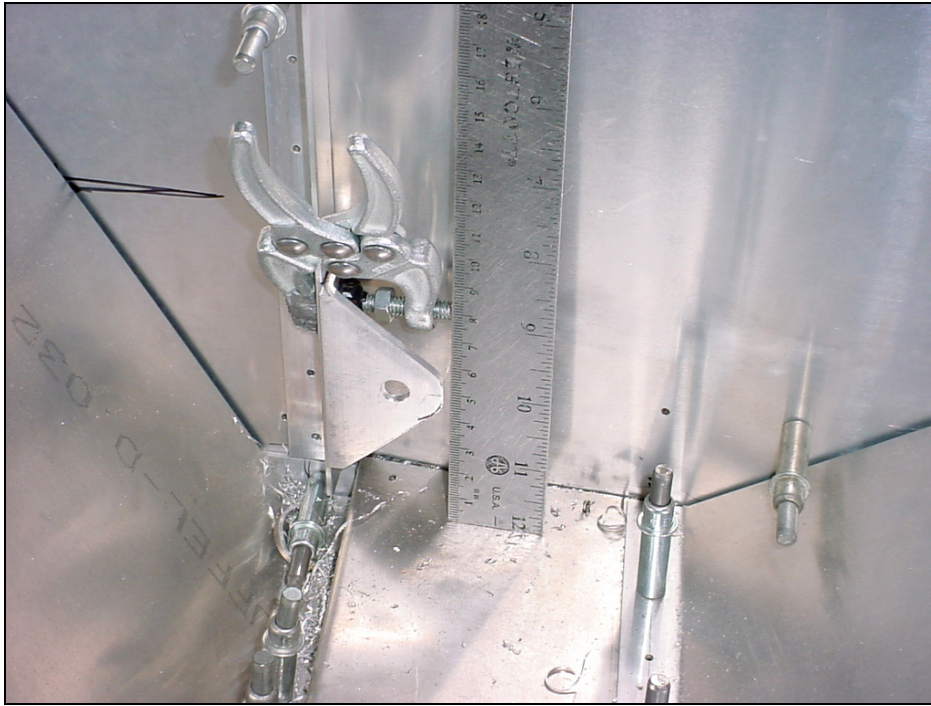
**SEAT BELT ATTACHMENT  
6B18-4**

Layout the 5/16" hole on the 1-1/2" flange.

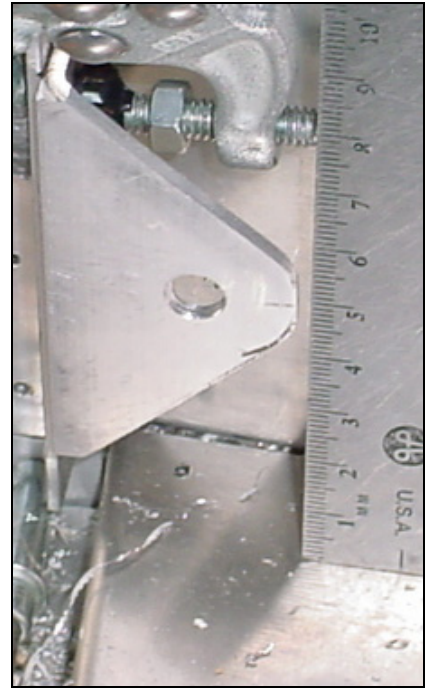


Qty: 2

Cut and file the sides smooth.



Positioned on the front side of the gear upright 6B11-3



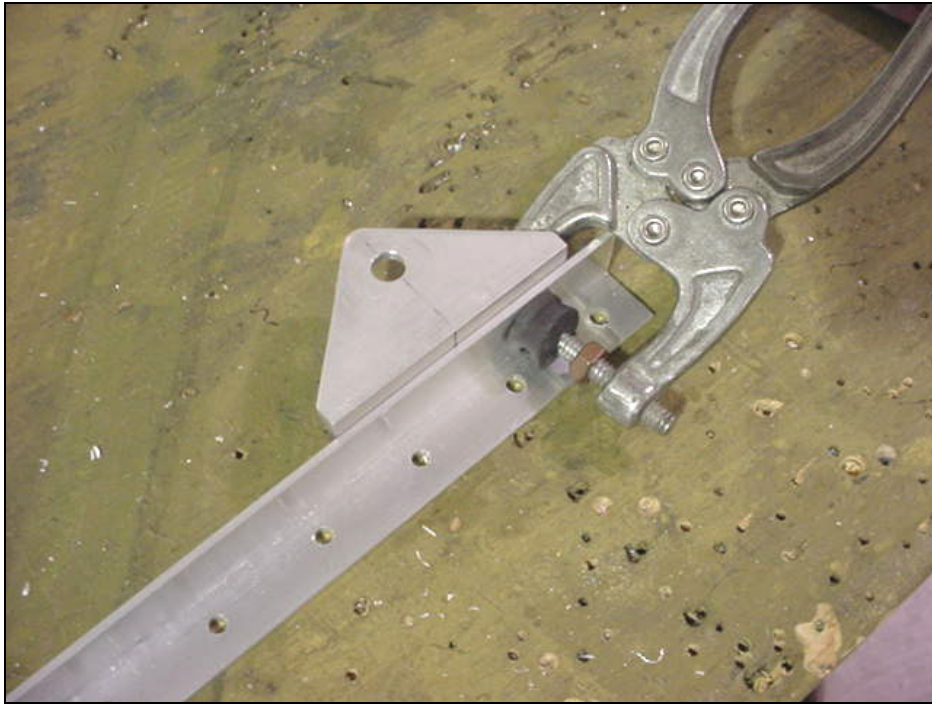
Clamp the seat belt attachment 50mm up from the top of the gear channel 6B8-5



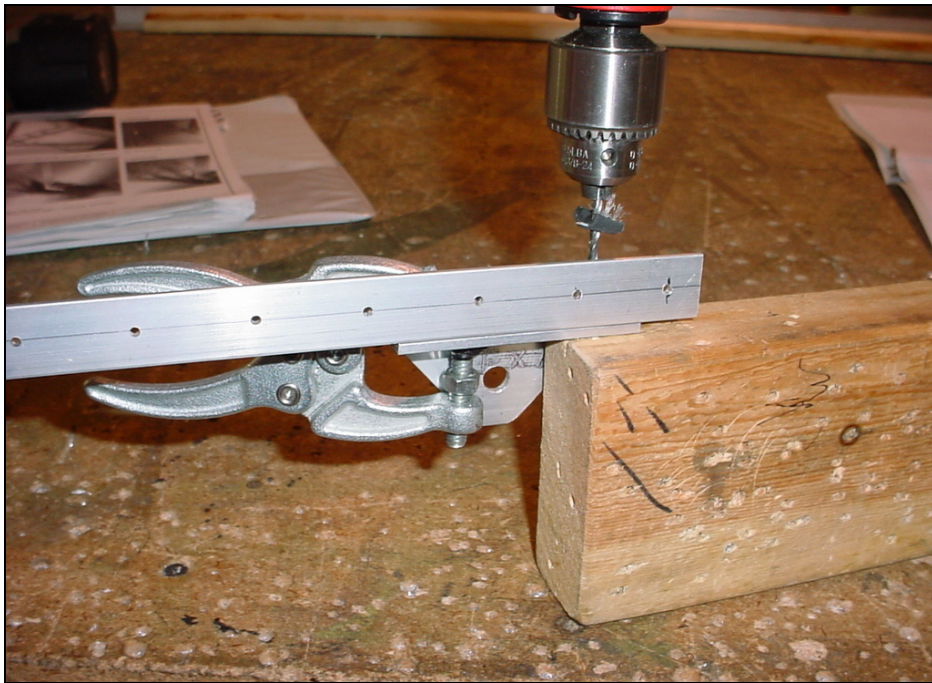
Remove the upright. Mark the top and bottom of the attachment on the extrusion.



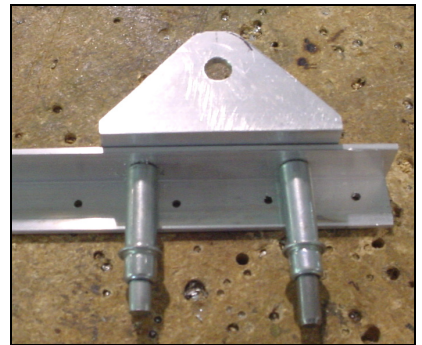
Layout the bolt holes. Pre-drill.



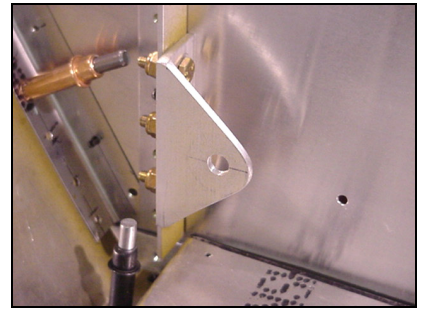
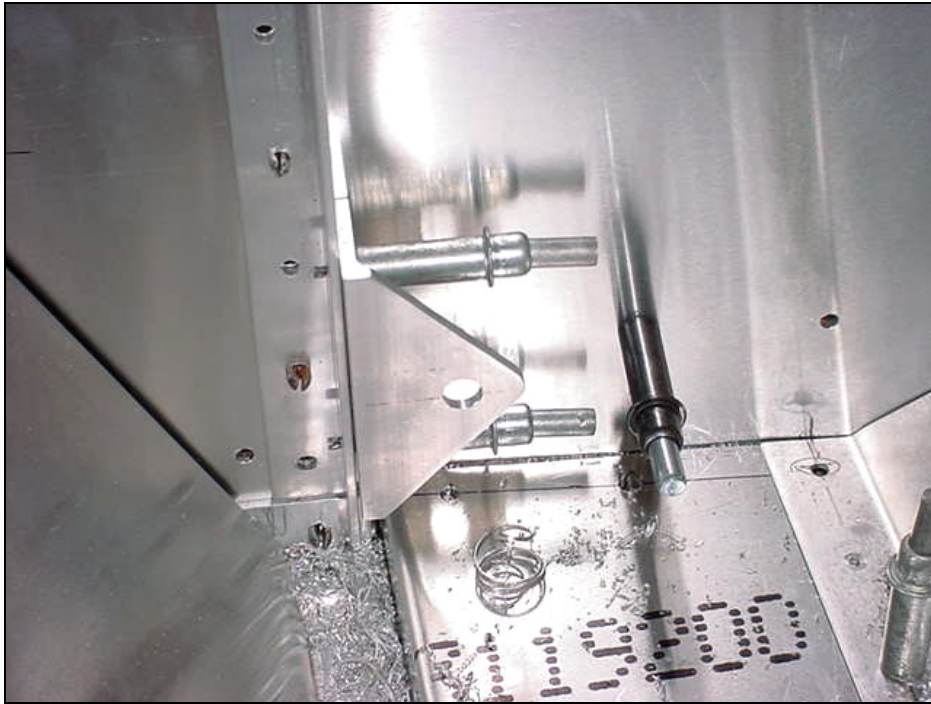
Re-position the attachment to the upright.



Back drill through the pilot holes in to the attachment.

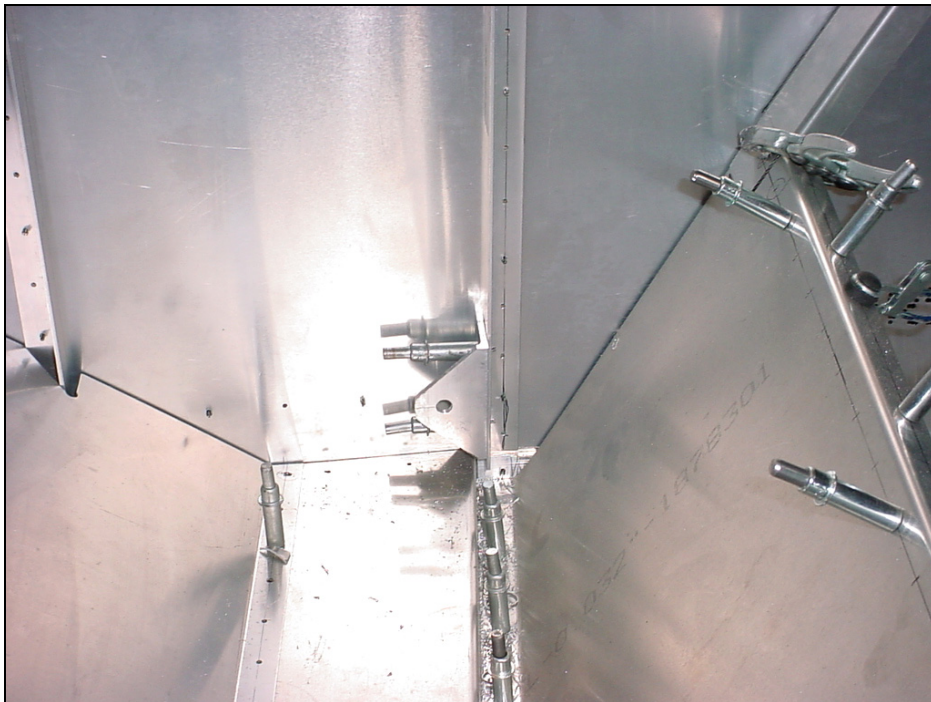


Drill and Cleco.



**2 BOLTS AN3-5A**  
6B18-4 to 6B11-3

Left side.

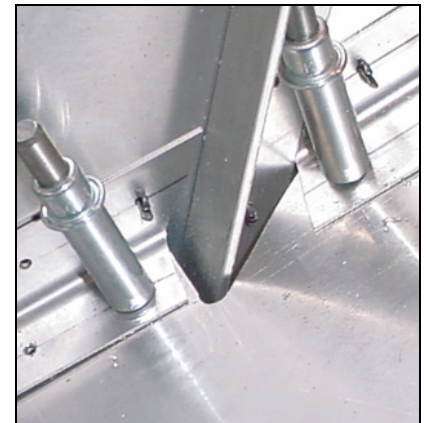
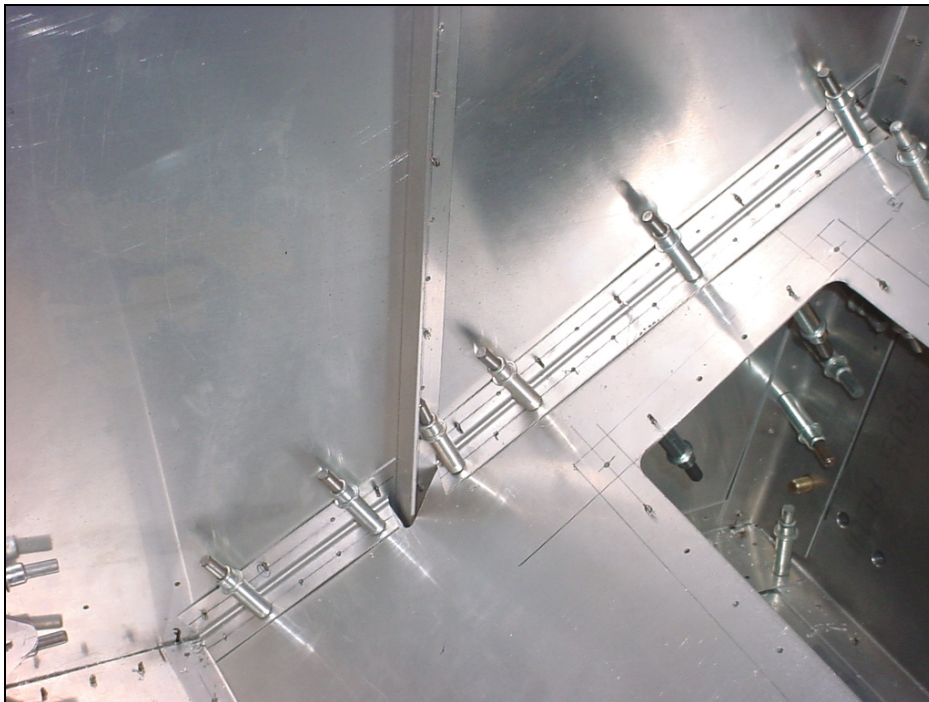


Right side.



Clamp the L angle to the front seat panel 6B15-4

Install the L angles in the corner of the seat and the fuselage side skin.



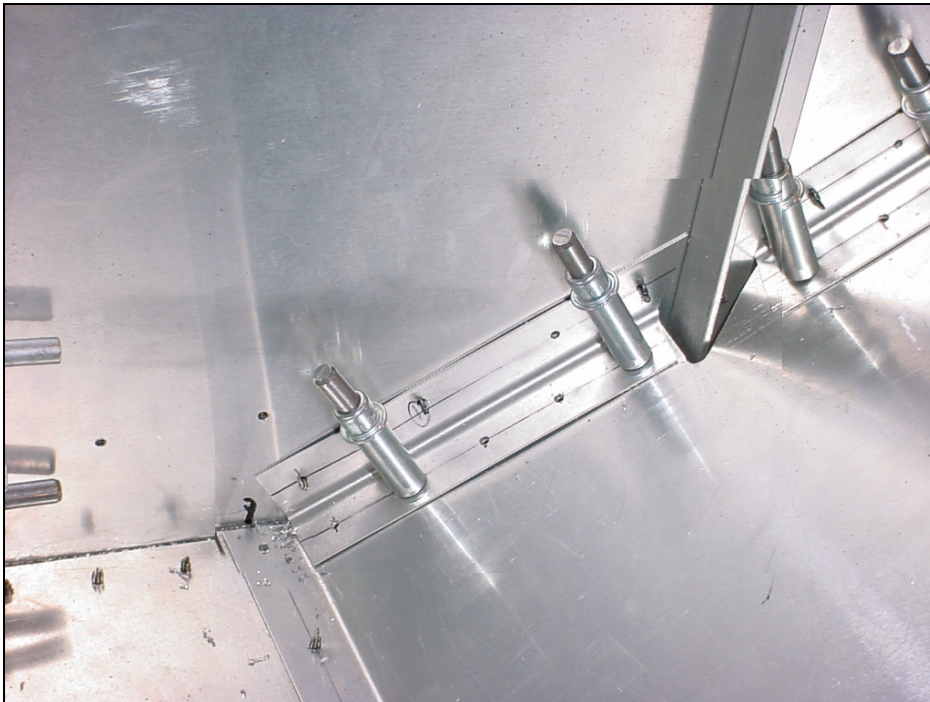
**L ANGLES**

**A5 PITCH 20**

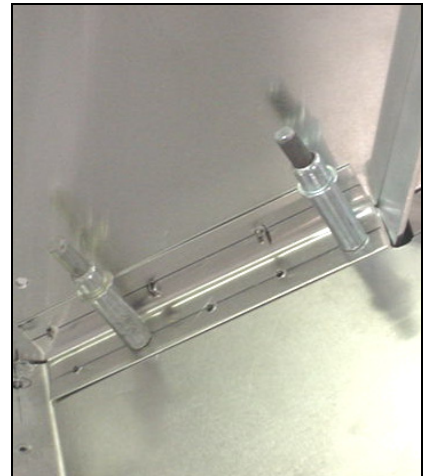
L Angles in the corner of the front seat panel 6B15-4 with the fuselage side 6B11-2 (two pieces, one on each side of the upright 6B11-3).

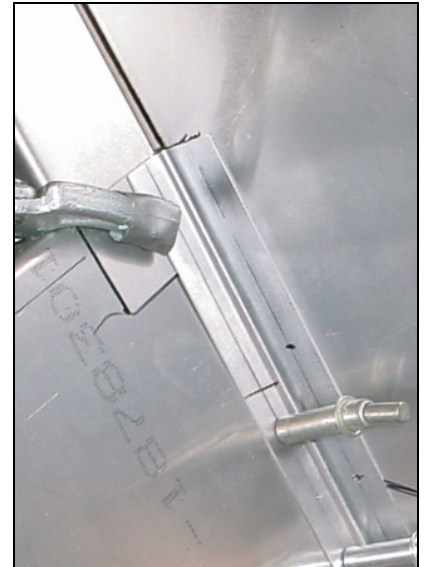


Another view of the L angle in the corner of the front seat panel 6B15-4 and the forward side skin 6B11-2



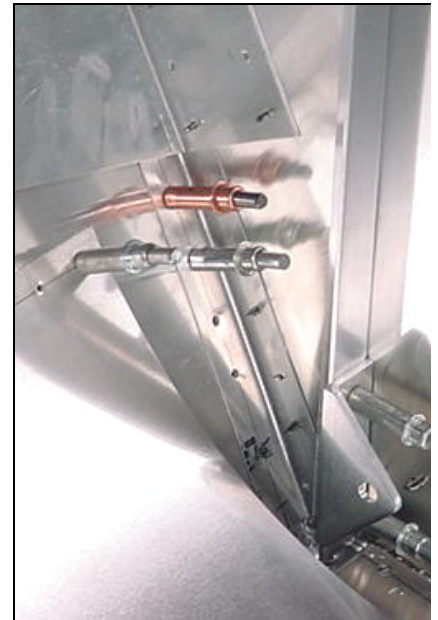
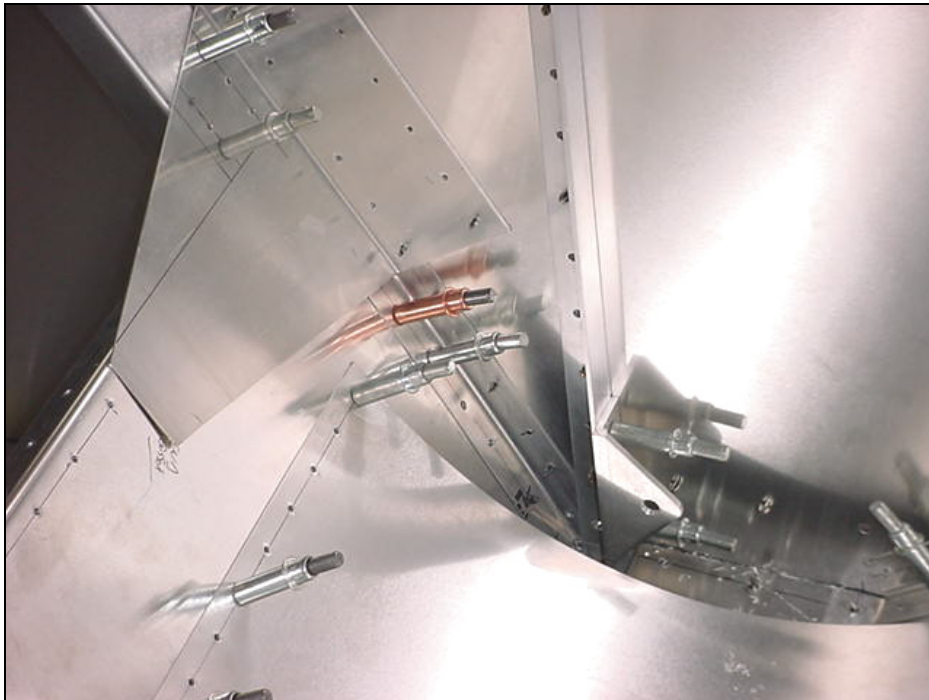
Short L angle behind the gear upright 6B11-3





Left side: Note the no rivet zone for the flap mount gusset 6B19-9

L angle in the corner of the rear seat panel 6B5-1 and the forward side skin 6B11-2



**L ANGLES**

Detail of left side.  
L angle is trimmed flush to the bottom edge of the flap mount gusset 6B19-9



**L ANGLES**

**A5 PITCH 25**

L angle to 6B15-4

L angle along the I/B edge of the front seat panel 6B15-4.



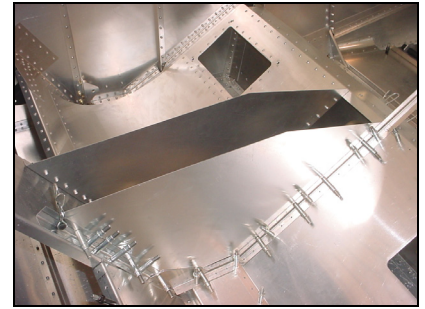
L angles along the front, bottom and back edge of the arm rest side 6B18-1.

NOTE: Use the width of the arm rest cover 6B18-2 to set the width of the L angles.



Detail of bottom aft overlap on top of the gear channel 6B5-5

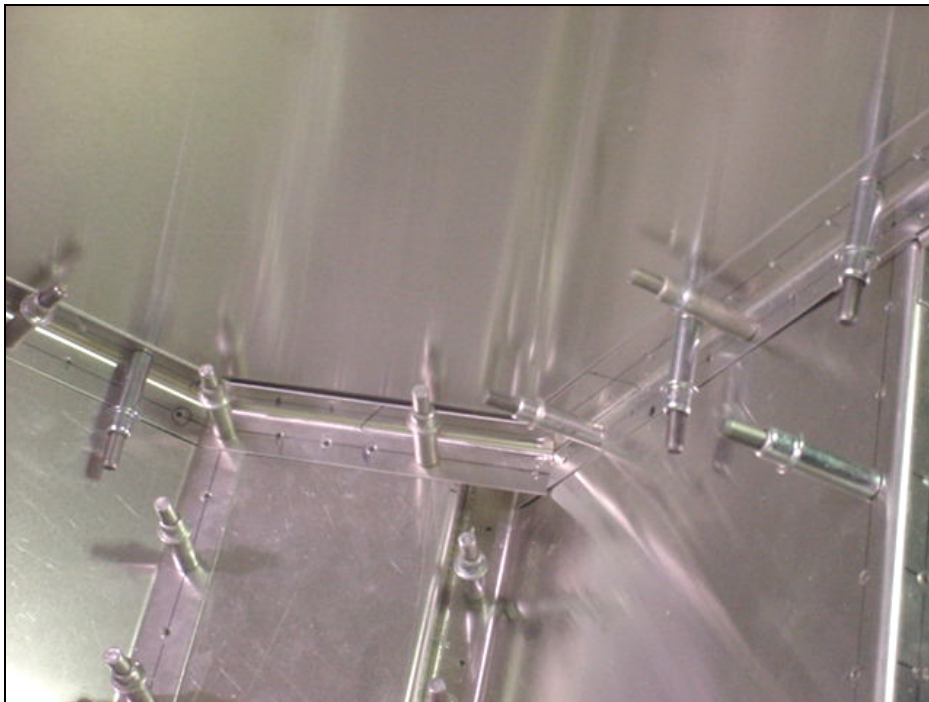




**ARM REST SIDE  
6B18-1**

Qty: 2

The arm rest side overlaps on the inside of the L angles.



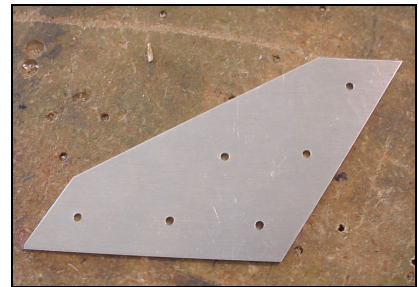
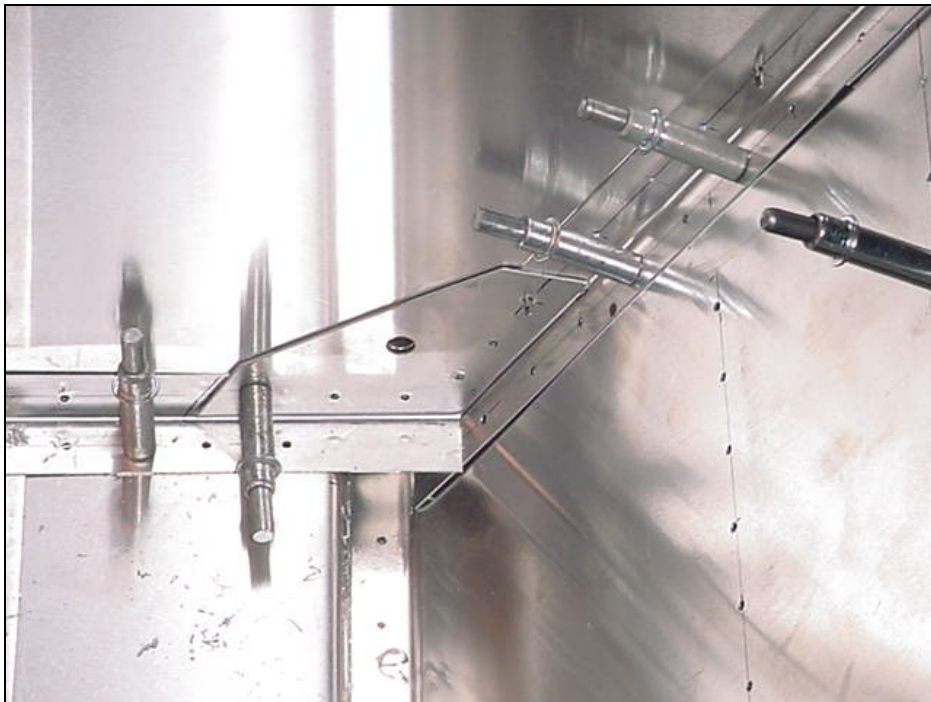
**A5 PITCH 25  
L angles to 6B18-1**

Plan for a no rivet zone for 6B18-3



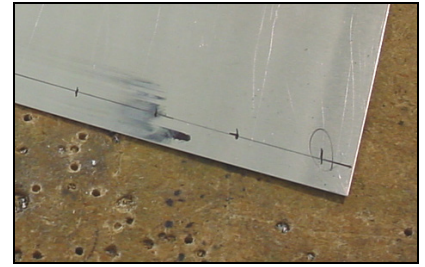
**SEAT BELT ATTACHMENT  
DOUBLER PLATE  
6B18-3**

Plate overlaps on the outside of the L angles.

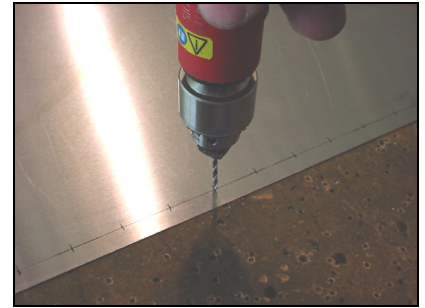


**6 RIVETS A5**  
Through L angles and 6B18-1

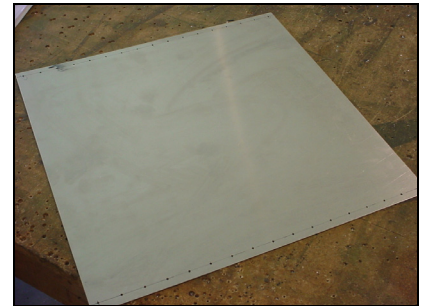
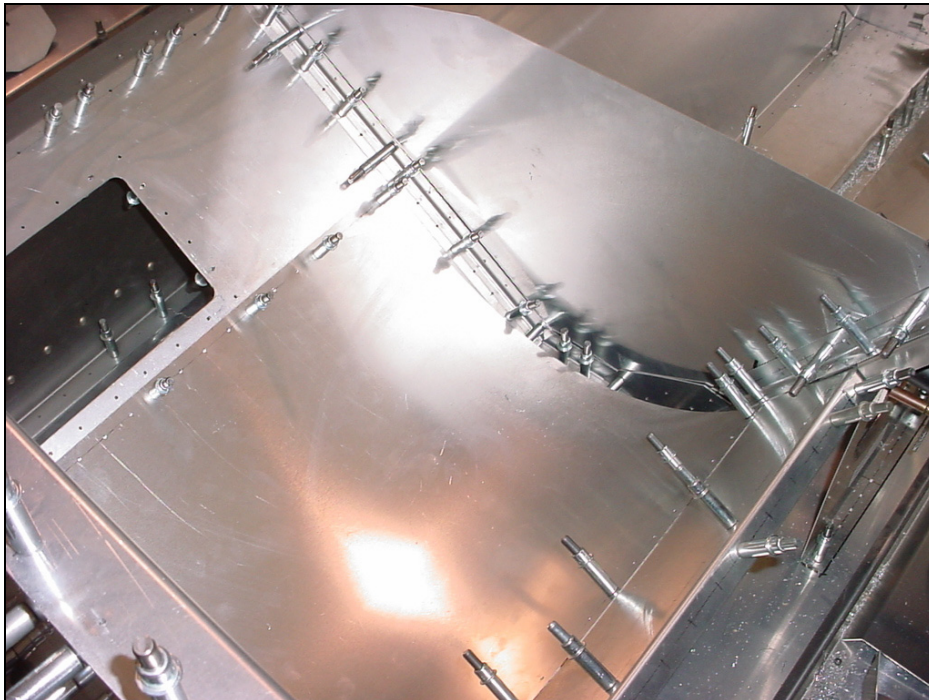
Drill the 5/16" hole through the doubler 6B18-3 and the arm rest side 6B18-1.



**SEAT BOTTOM  
6B18-6**



Pre-drill the front edge of the seat bottom.



**A5 PITCH 25**  
Front: 6B18-6 into 6B15-5  
Rear: 6B18-6 into 6B5-1

Ref. bottom right diagram on  
drawing 6-B-18

Note: the Seat Bottom is unsupported along the side.



**ARM REST COVER  
6B18-2**

Clamp the cover on over the arm rest sides.



L angle in the corner of the  
arm rest cover 6B18-2 and  
the center seat back  
channel 6B16-2

Open a piece of L angle 30 degrees.