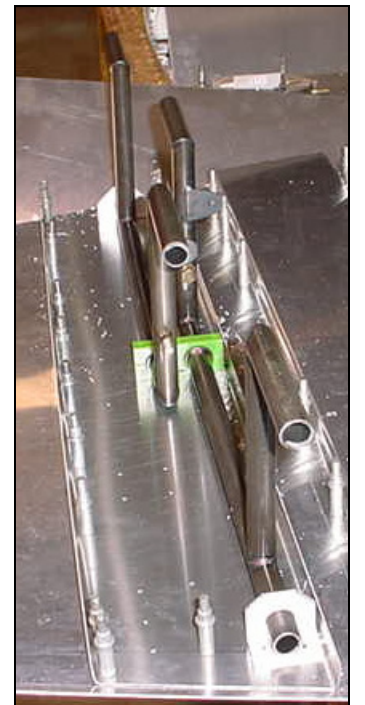


**CENTER PEDAL BEARING
6B9-4**

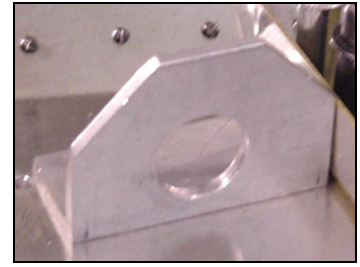
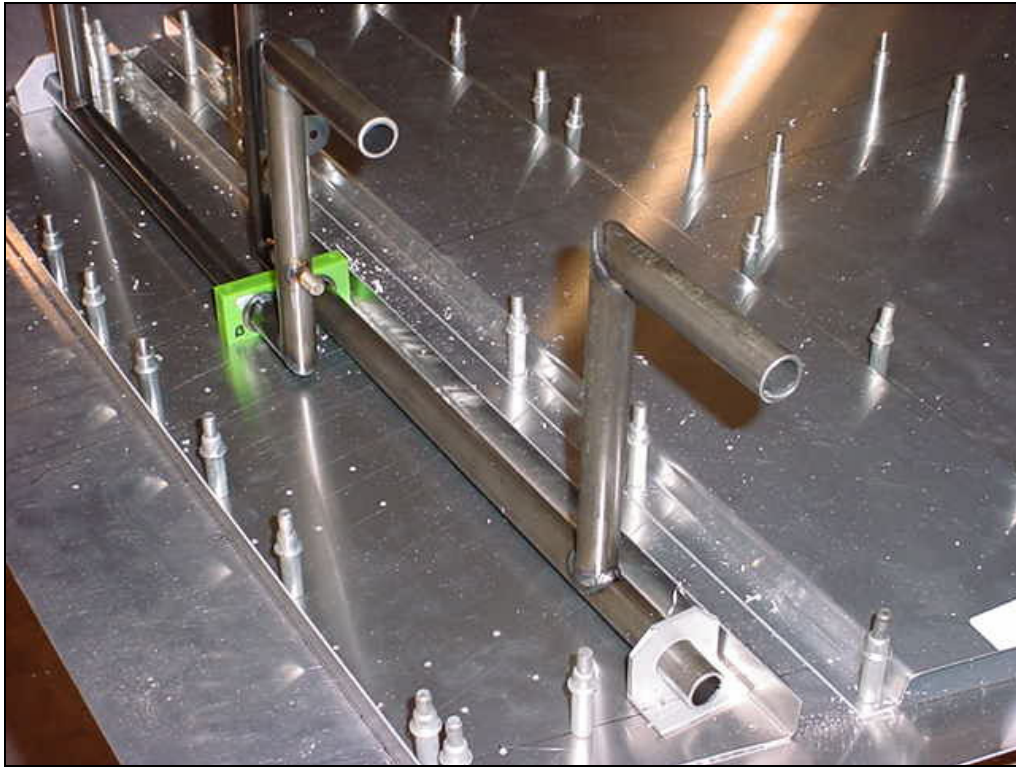
CHECK: The front edge of the bearing fits behind the aft flange of the pedal bearing channel 6B8-3

Photo of bottom half of center pedal bearing.
Center hole is 200mm from the front edge of the cabin floor skin.



**RUDDER PEDALS
6B9-1**
Qty=1L + 1R

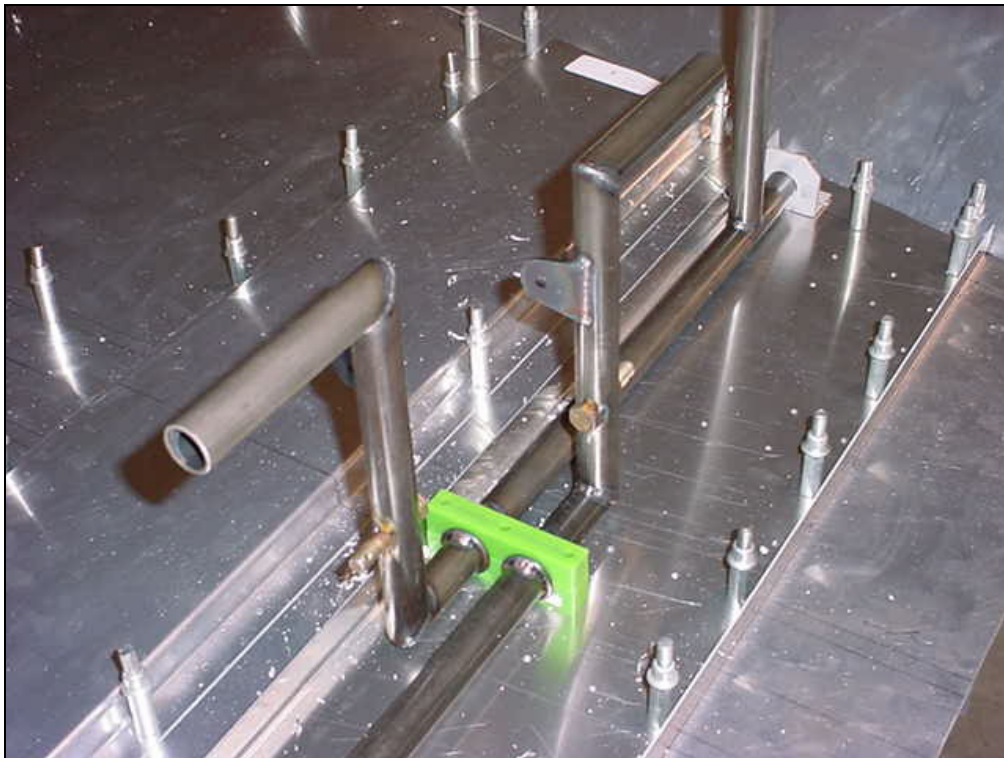
ORIENTATION:
The steel plate for the rudder cable points towards the rear.
See drawing 6-B-23 for an overview of the rudder cables.



**LATERAL PEDAL BEARING
6B9-5**

Orientation:
The vertical flange with the $\frac{3}{4}$ " hole is I/B of the bottom flange.

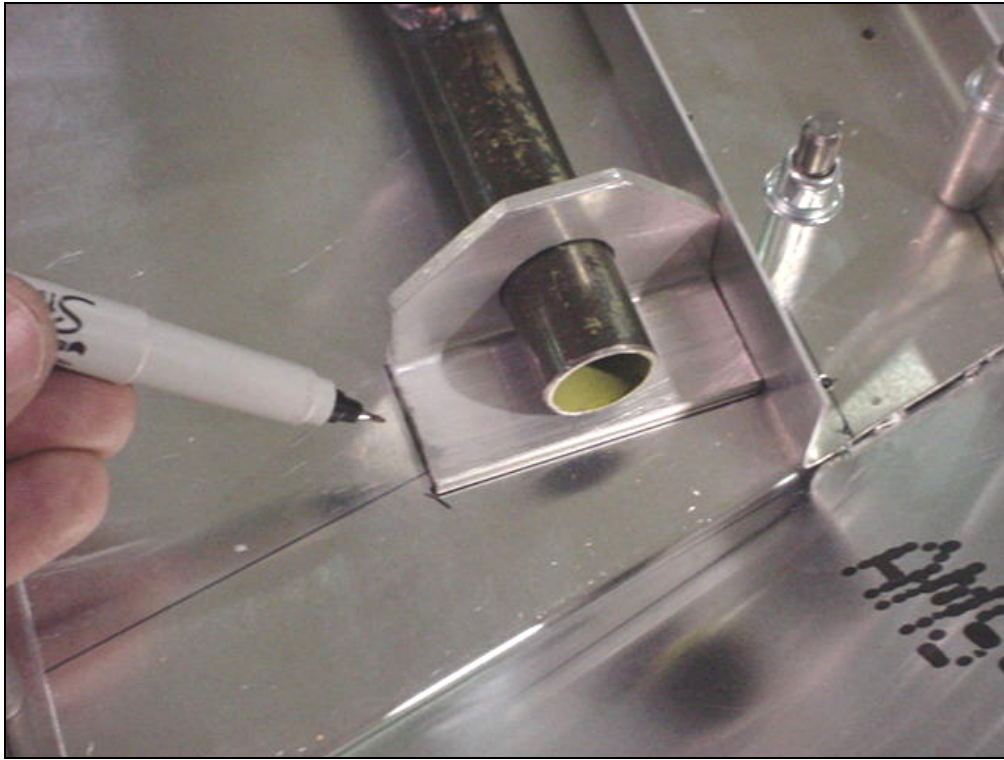
Left and right pedals mean the left and right foot of the pilot (sitting in the left seat facing forwards).



Bolt the pedals to the Center Pedal Bearing 6B9-4.

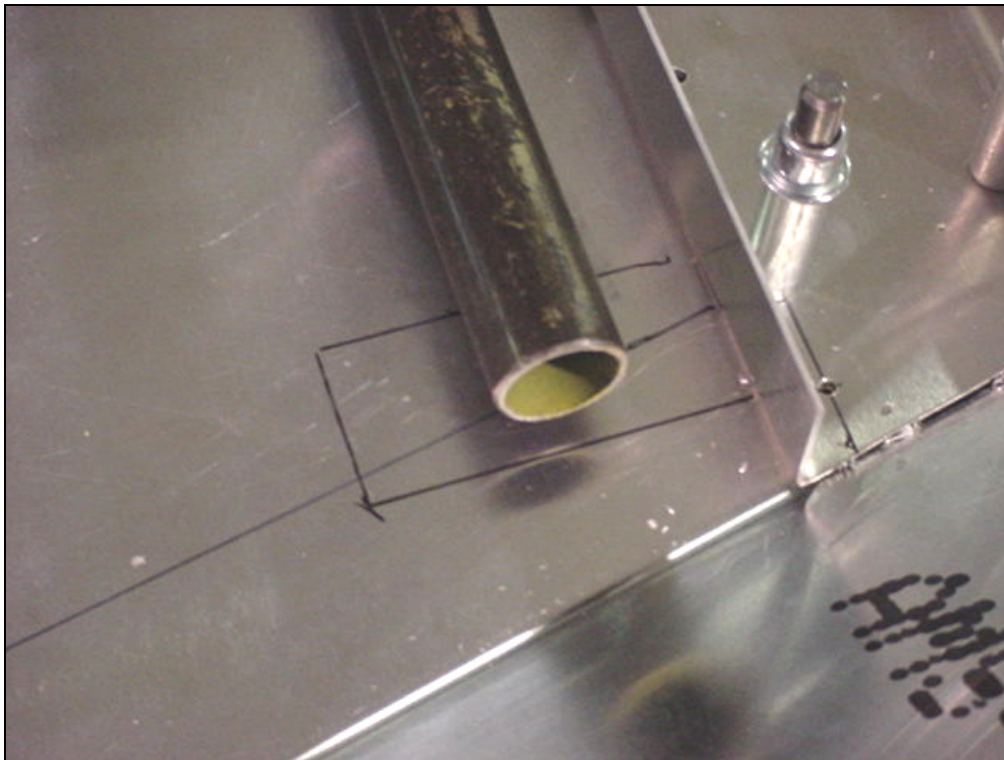
Orientation:
The left pedal is in the rear hole; the right pedal is nearest the firewall.

Adjust the position of the O/B end of the pedals parallel to the channel.

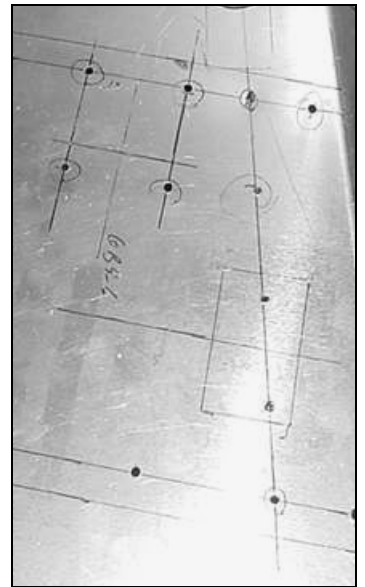


With a marker, trace around the Bearing 6B9-5 to mark the Floor Skin.

The sides of the Bearing 6B9-5 are square to the Channel 6B8-4
Photo of right side.

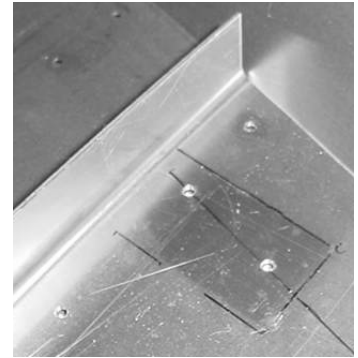
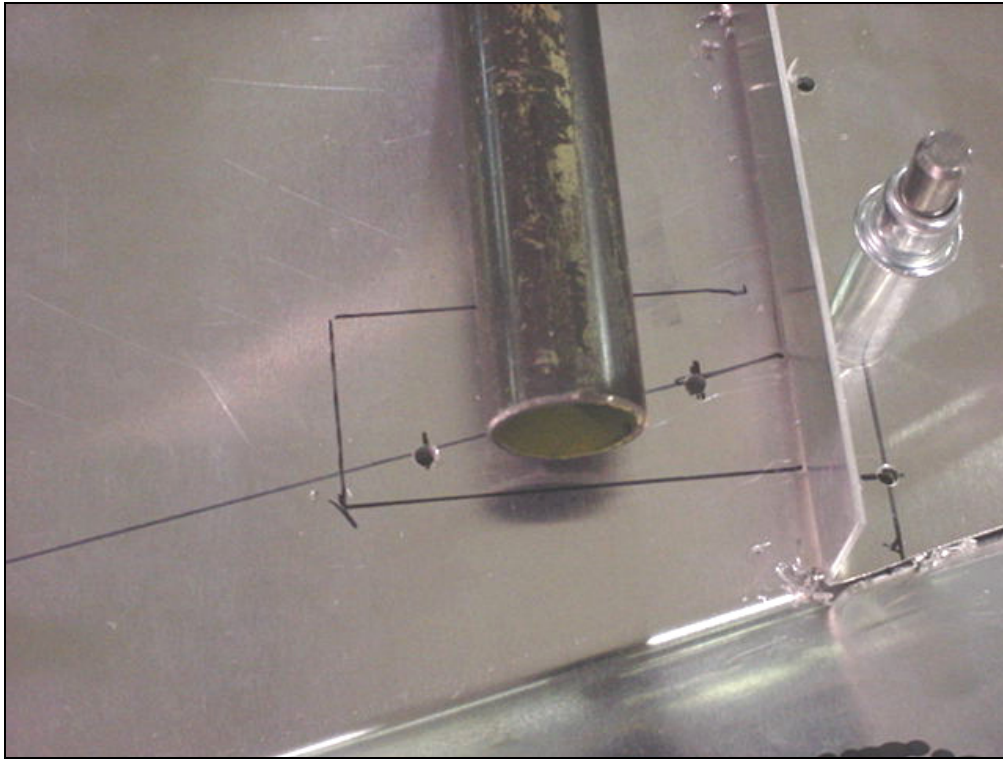


Remove the Bearing to locate the 2 bolts holes (for skins that are not pre-drilled).

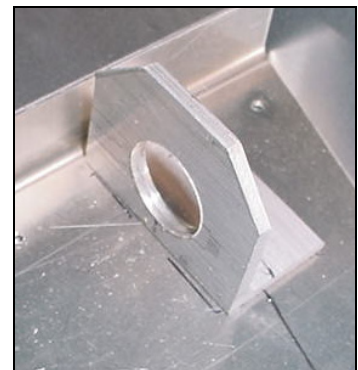
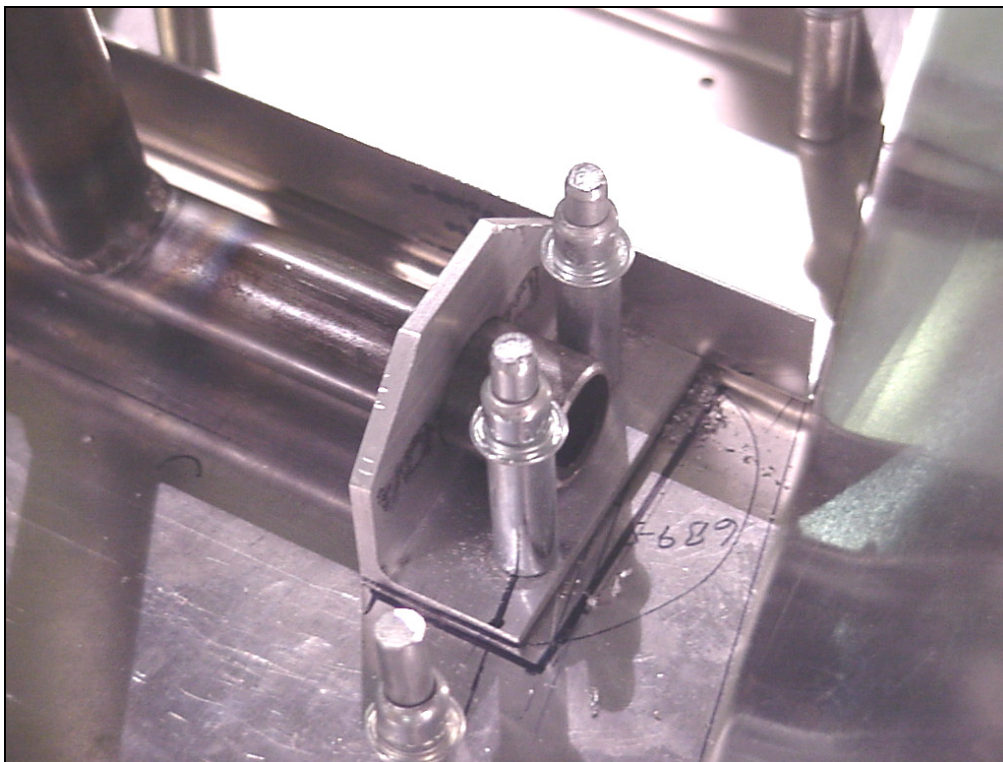


Ref. Top right diagram on drawing 6-B-10.

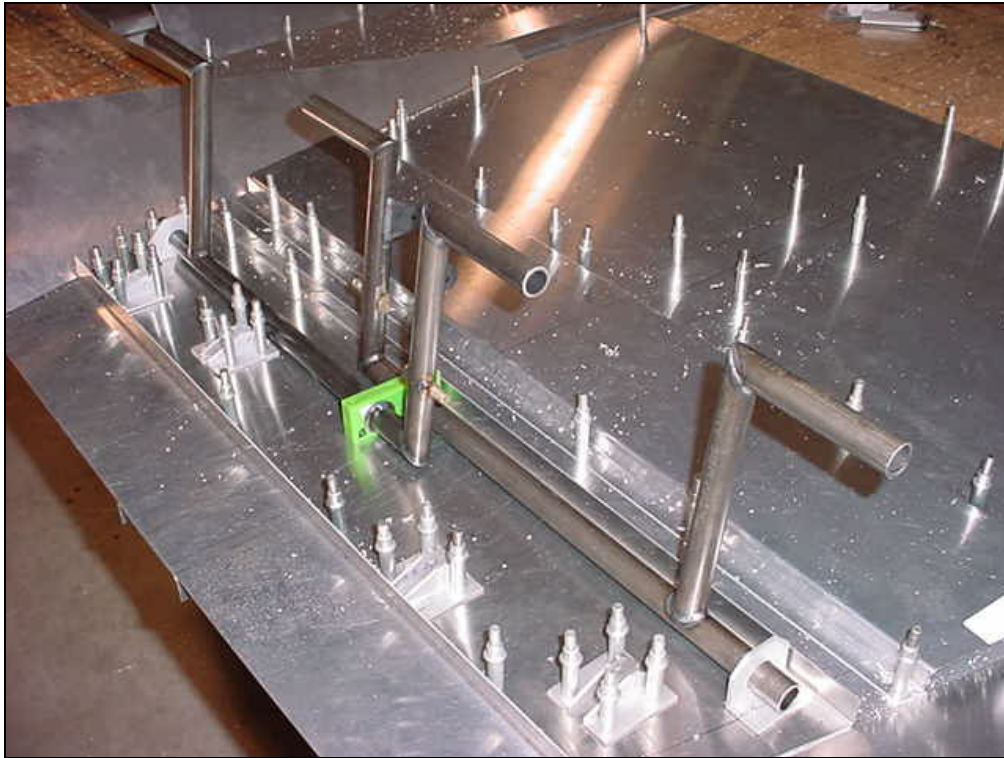
IMPORTANT: locate the 2 bolts AN3 in the middle of the Longeron 6B10-3.



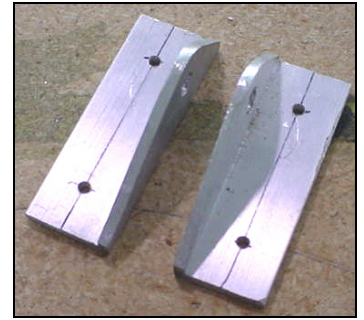
Pre-drill 2 pilot holes.



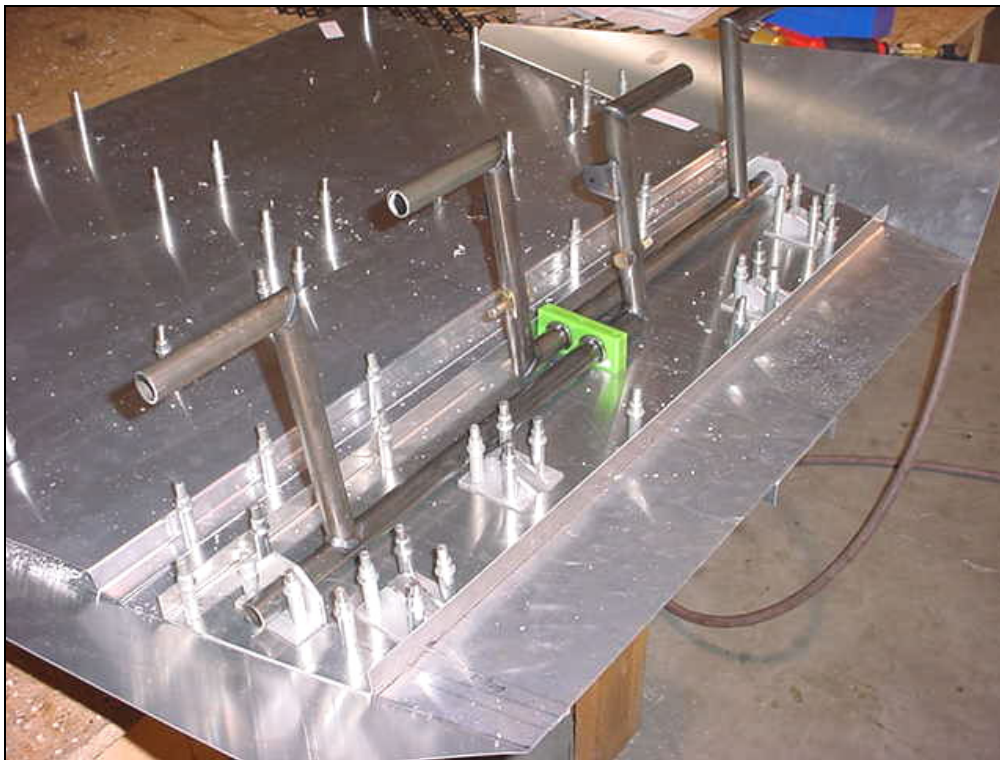
Back drill and Cleco the Bearing 6B9-4 to the Longeron 6B10-3.



Shown for dual brake option (brakes on the co-pilot side).



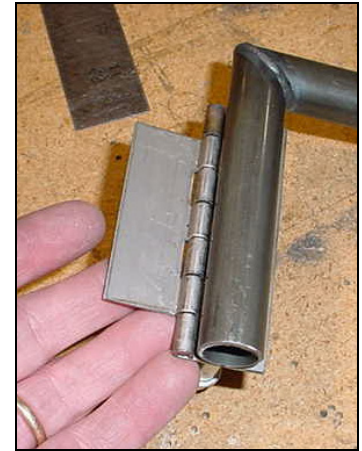
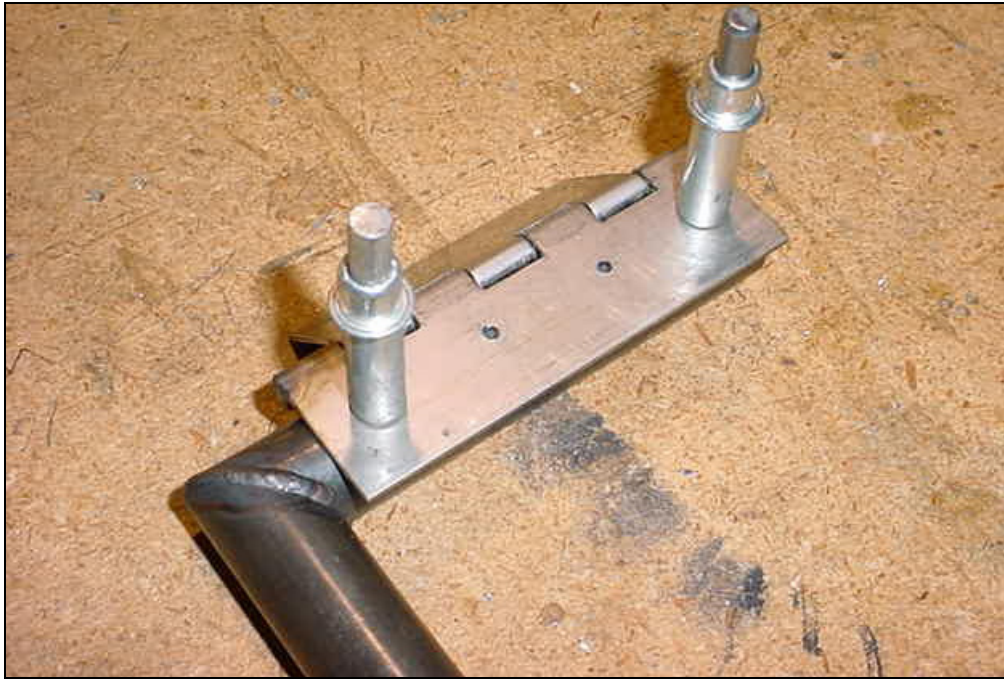
**BRAKE CYLINDER
SUPPORT
6B9-6**



13mm distance between supports 6B9-6.



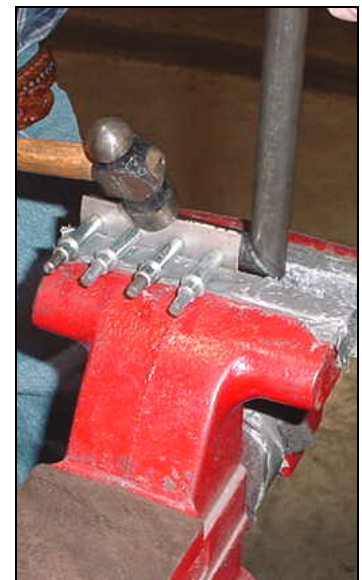
Check that the base of the master cylinder fits between the supports.



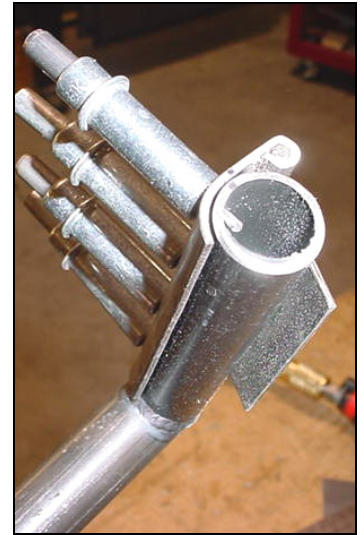
**STAINLESS STEEL
PIANO HINGE
6B9-2**

Drill and Cleco the Toe Brake Pedal 6B9-3 to the Piano Hinge 6B9-2 and to the Rudder pedals 6B9-1.

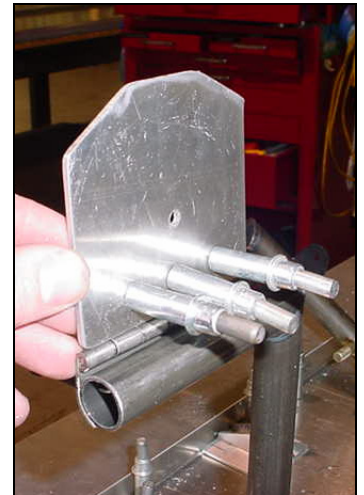
Standard brakes are installed on the left side. The front and back is determined by the direction of the rudder cable attachment plates welded to the side of the rudder pedals: they must point aft (towards the rudder) as shown in the bottom right hand diagram on drawing 6-B-9 and 6-B-23. The piano hinge is riveted on the front side of the rudder pedals.



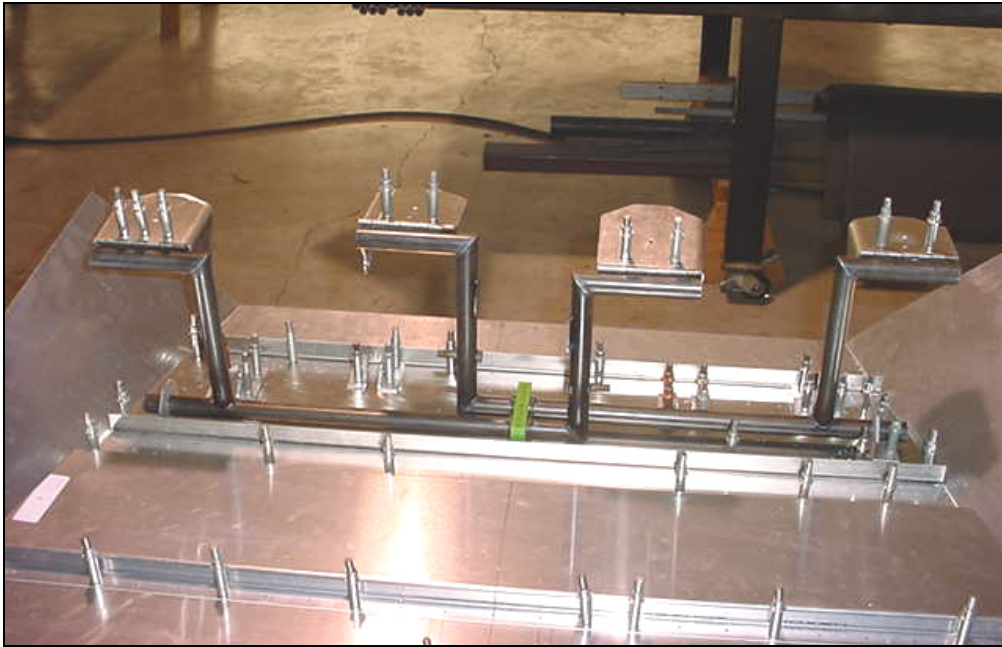
Support the pedal in an open vise. Use a ball peen hammer to bend the bottom edge of the hinge.



Hammer the bottom edge of the hinge around the tube before riveting to help increase the surface area. Rivet with 4x AS5 (stainless steel rivets).



**TOE BRAKE PEDAL
6B9-3**
Qty: 1L+1R



**MASTER CYLINDER
WITH BUILT IN
RESERVOIR
MC-5**

(Manufactured by
MATCO).

