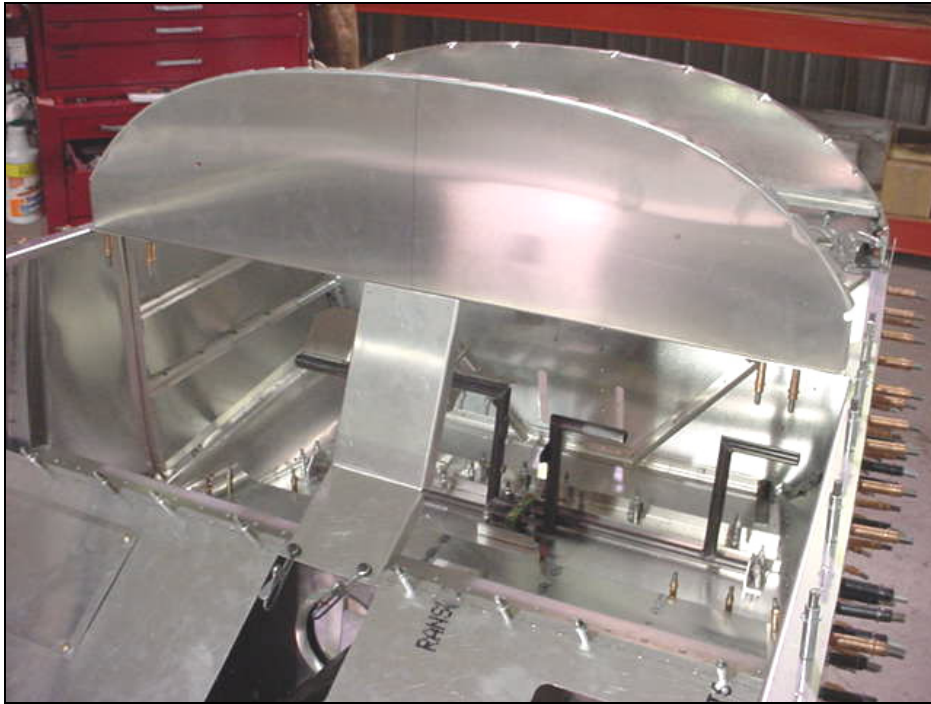




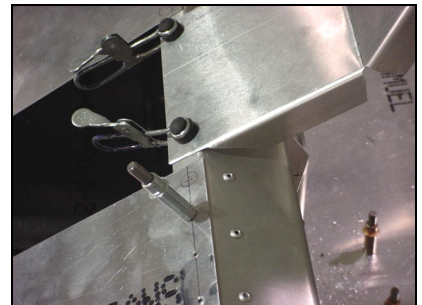
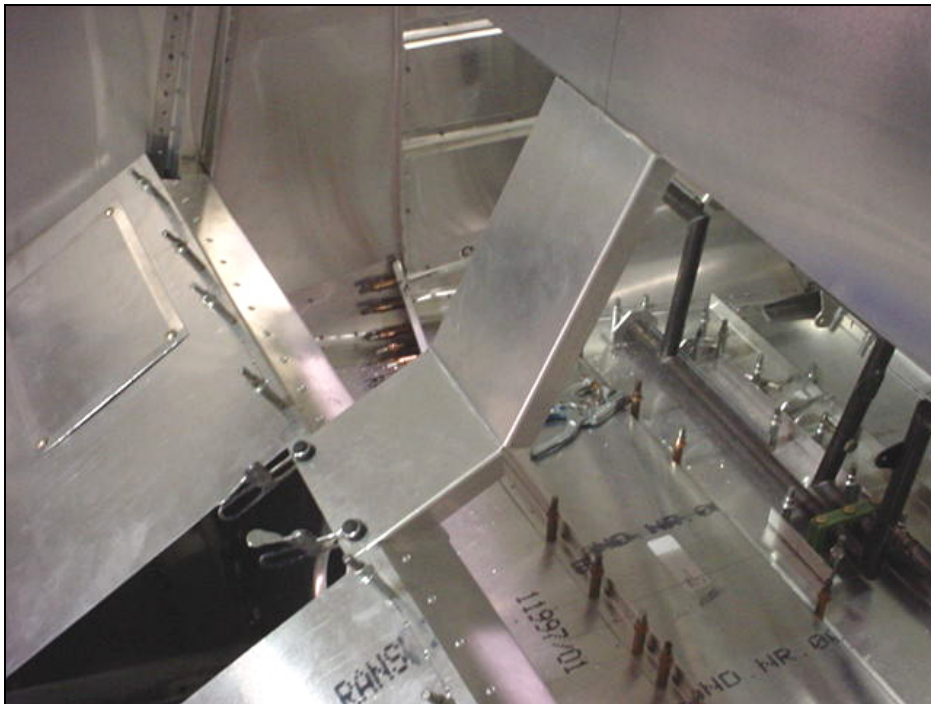
Center Console for mounting a 3-way fuel selector.

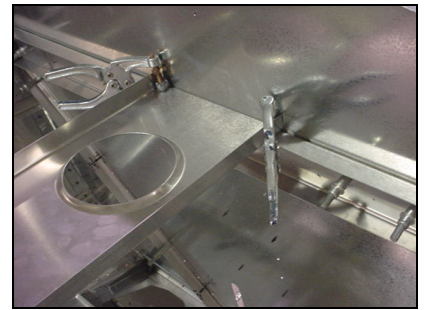


Note: the center console would replace the rudder cable box

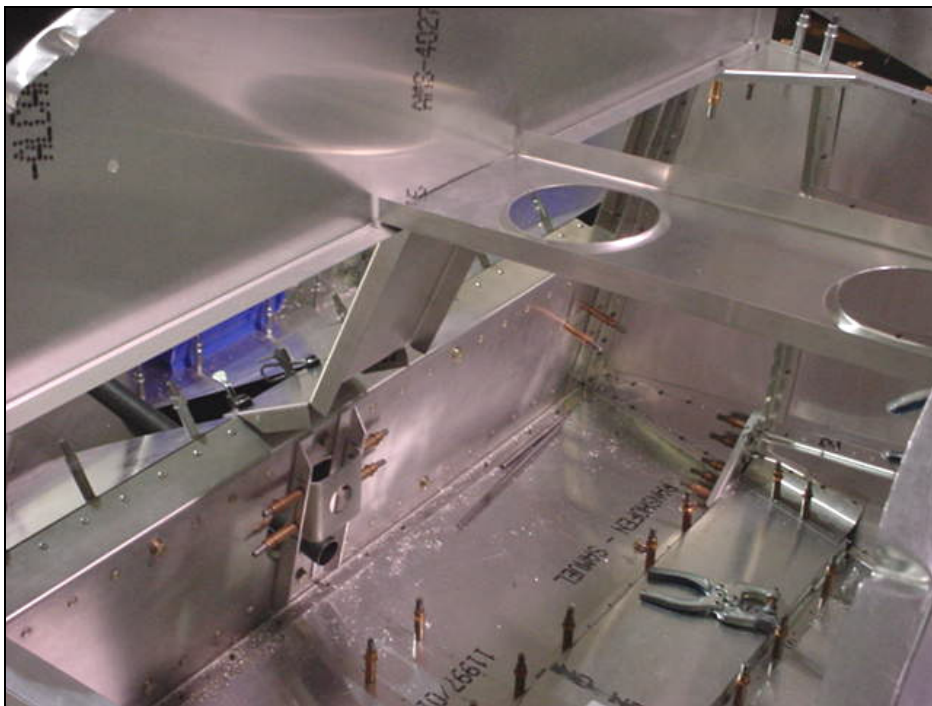


Center Console





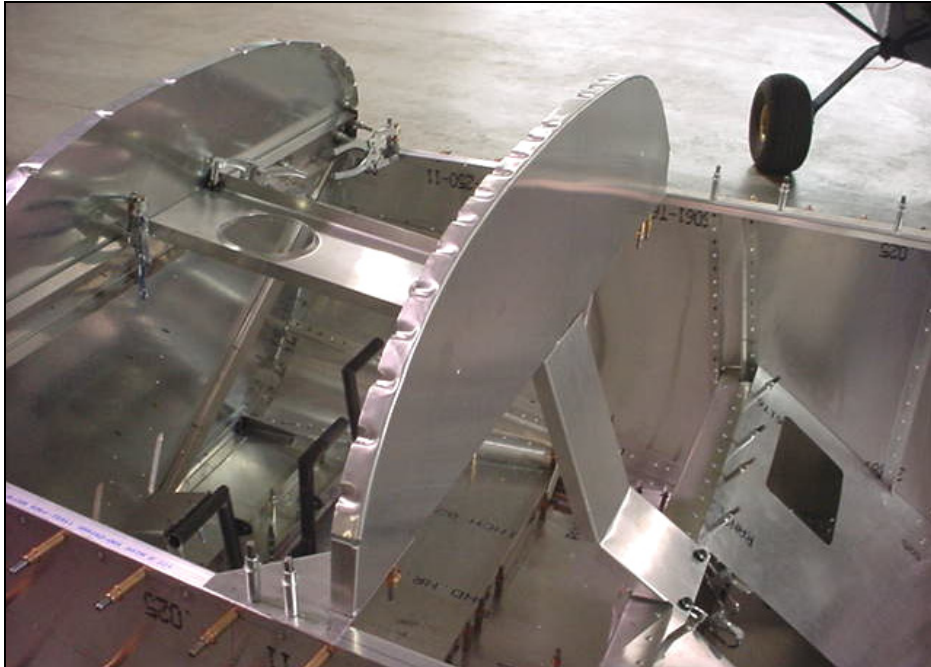
5 RIVETS A5



6 RIVETS A4
The 4 middle rivets are through the connecting L angle with the center console

Photo of the back side of the instrument panel.

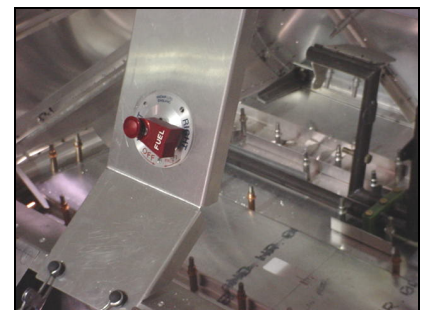
COMMENT: Adjust the angle of the bottom flange of the instrument panel to line up with the Channel



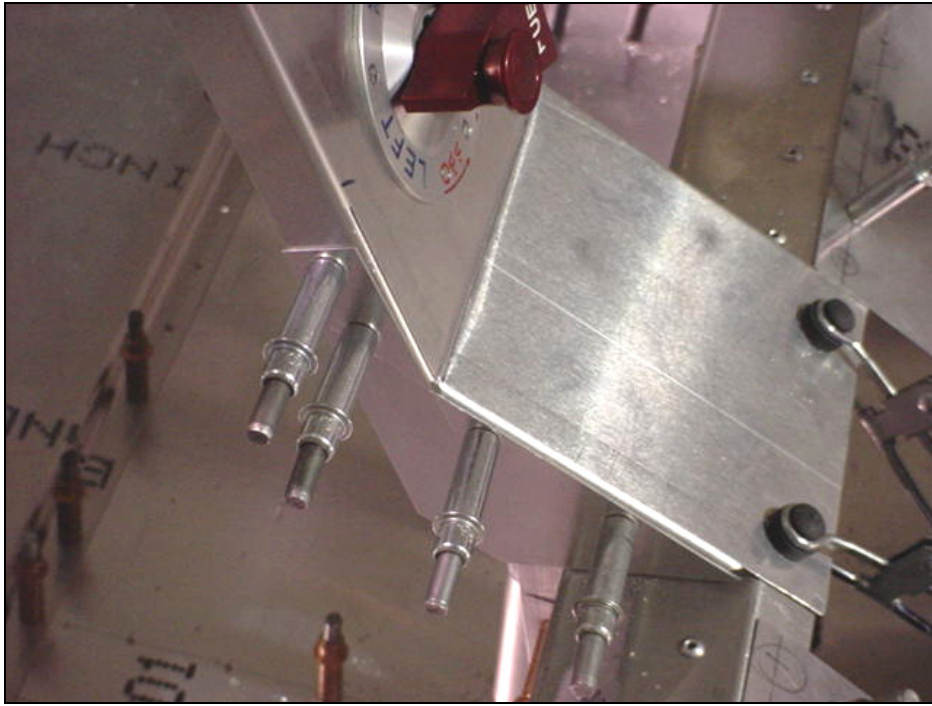
4 RIVETS A4

Riveted to the aft flange of the Center spar Web 6W4-1

CAUTION: use a drill stop on the drill bit to make certain the drill bit does touch or mark the spar web.



SUGGESTION: Wait to installing the fuel selector valve on the center console until you've had a chance to site in the cabin and that the valve is accessible from the top of the Y handle of the control Column.



Side Gusset

4 RIVETS A4

