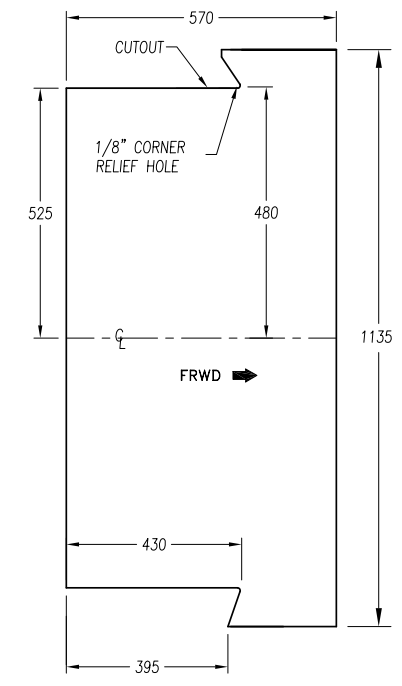
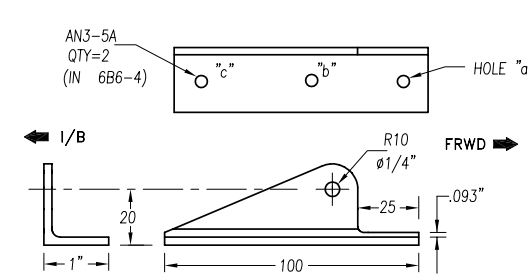


**1** **PANEL SIDE ANGLE**  
 $t=.032"$  6016-T6 (2 REQ'D)

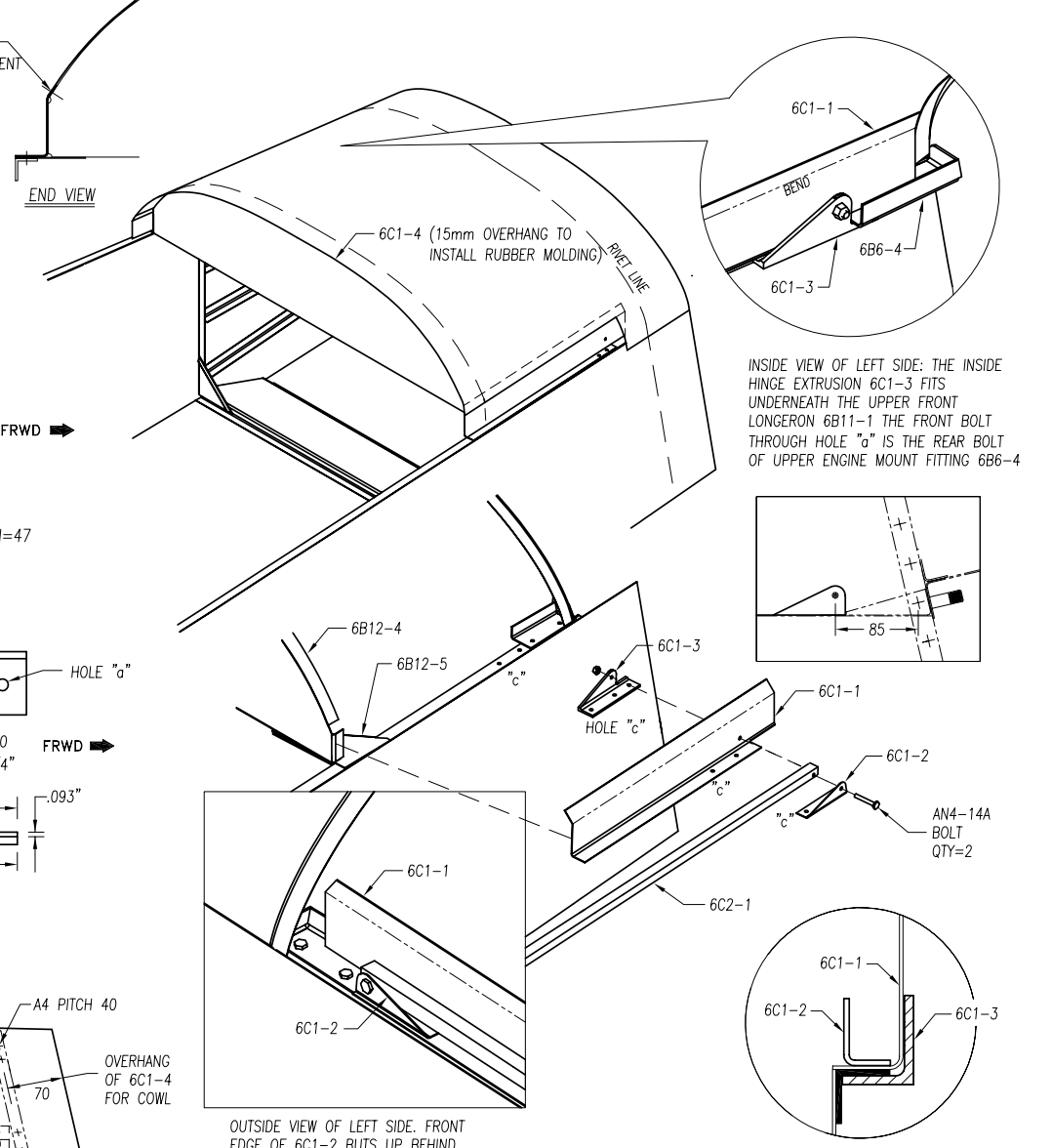
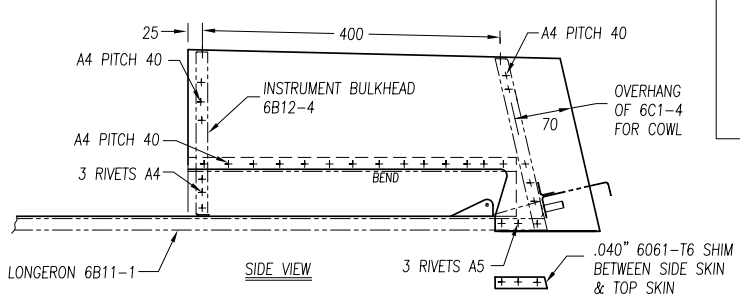


**4** **FORWARD TOP SKIN**  
 $t=.025"$  6016-T6 (1 REQ'D)  
 600x1219

**2** **OUTSIDE HINGE ANGLE**  
 $t=.040"$  6061-T6 (1L+1R REQ'D)

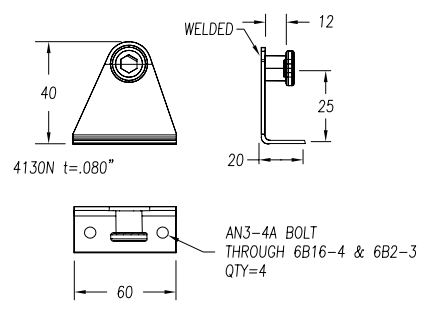
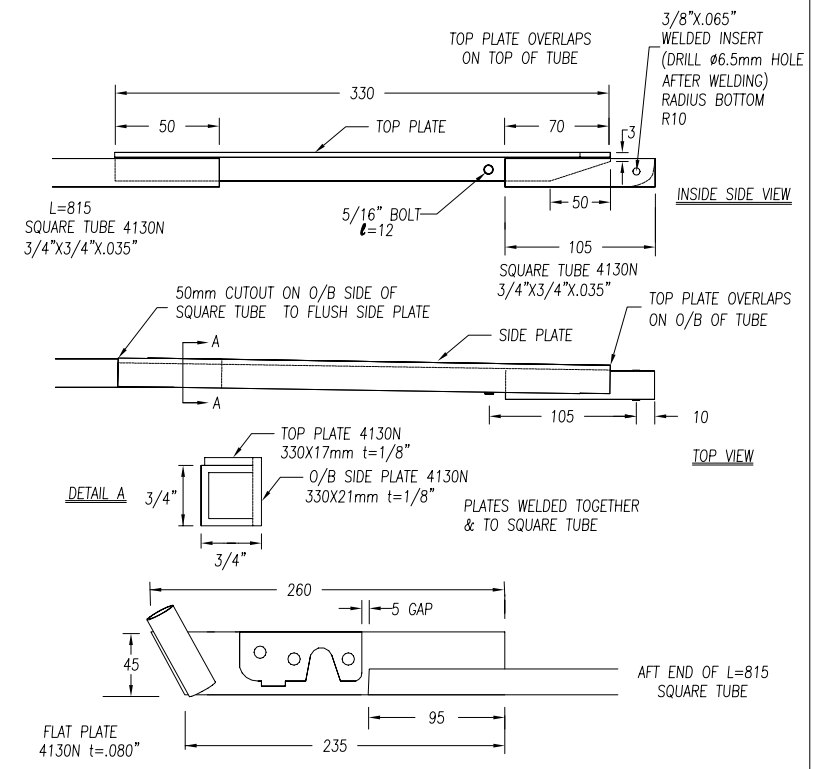
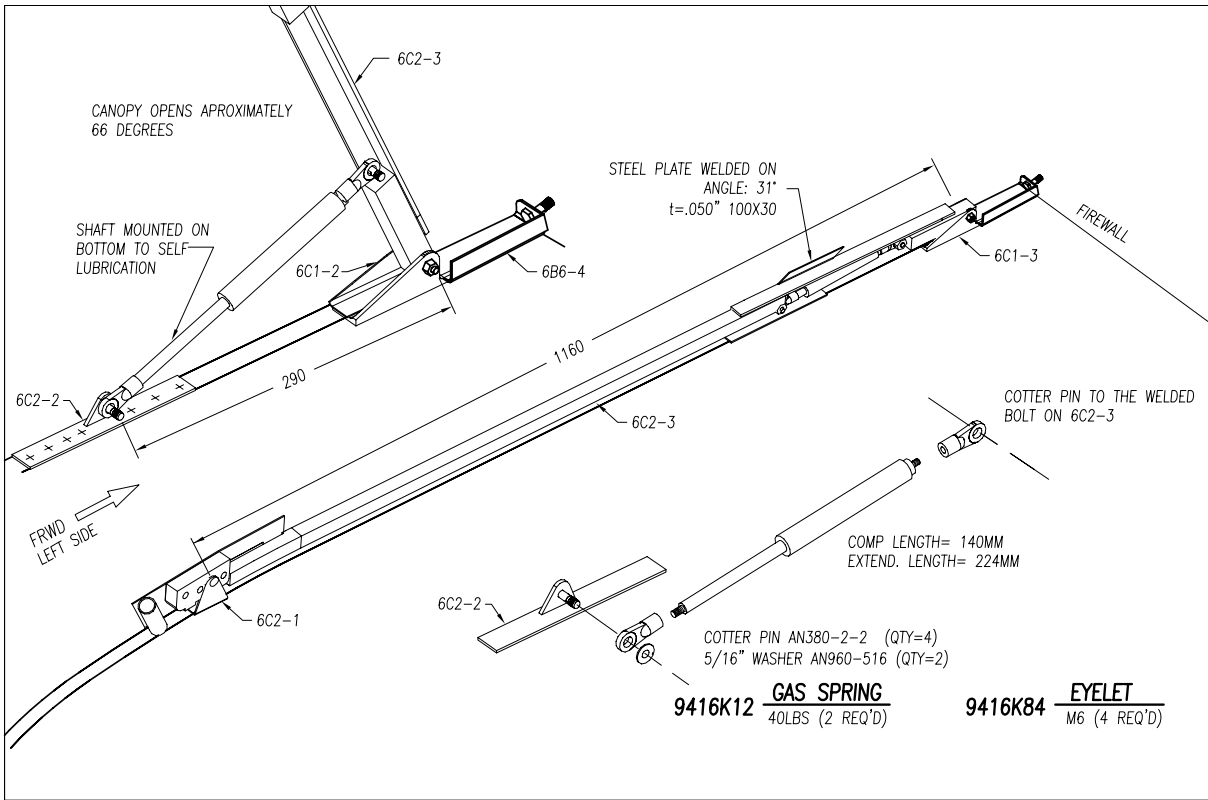


**3** **INSIDE HINGE EXTRUSION**  
 EXT. 1-1/2"x1"x1/8" 6016-T6 (2 REQ'D)

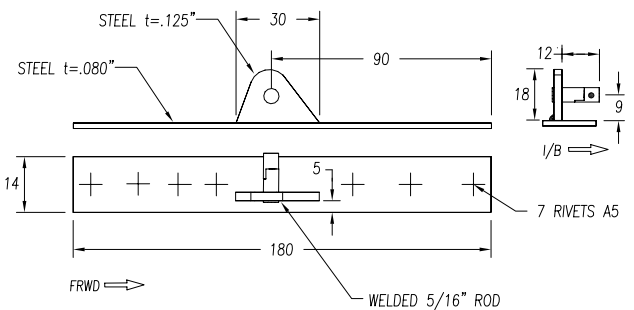


OUTSIDE VIEW OF LEFT SIDE. FRONT EDGE OF 6C1-2 BUTS UP BEHIND 6B6-4 (OVERLAPS ON TOP OF PANEL SIDE ANGLE 6C1-1)

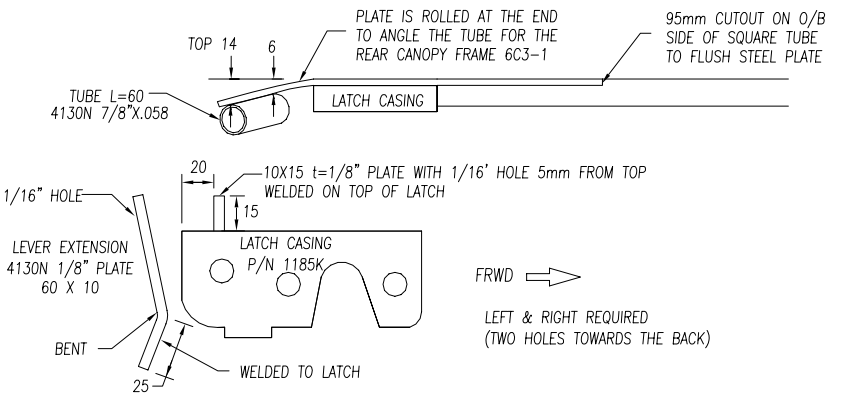
<b>ZODIAC</b> CH 601 XL	CANOPY HINGE FORWARD TOP SKIN	<b>6-C-1</b>
	copyright © 2002 CHRIS HEINTZ    zenithair.com	DATE: 01/03



① **STRIKER STUD**  
WELDED ASSEMBLY (1L & 1R REQ'D)

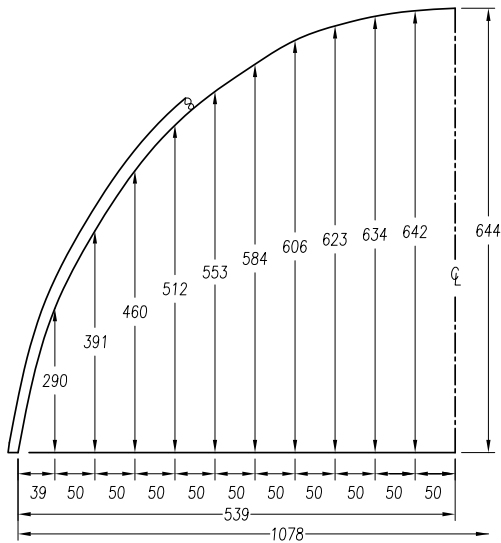


② **BOTTOM BRACKET**  
WELDED ASSEMBLY (2 REQ'D)



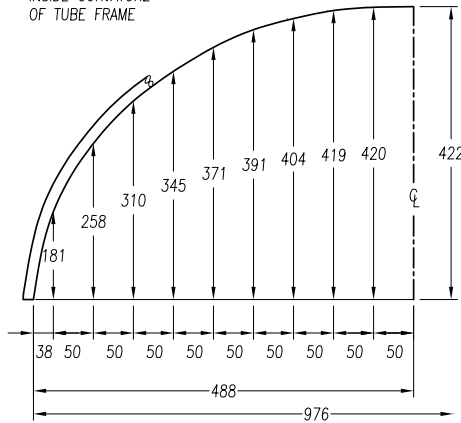
③ **CANOPY SIDE FRAME W/ LATCH**  
STEEL WELDED ASSEMBLY (1L & 1R REQ'D)

<b>ZODIAC</b> CH 601 XL	CANOPY SIDE FRAMES WITH LATCH & GAS SPRINGS	<b>6-C-2</b>
	copyright © 2002 CHRIS HEINTZ    zenithair.com	DATE: 01/03

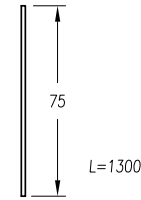


**1** **REAR CANOPY FRAME**  
 $\phi 3/4"$  x.058" WALL 6061-T6 ROUND TUBE (1 REQ'D)  
 dl=80-1/8"

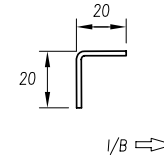
COORDINATES FOR INSIDE CURVATURE OF TUBE FRAME



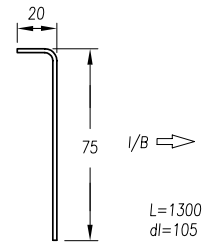
**2** **FRONT CANOPY FRAME**  
 $\phi 3/4"$  x.058" WALL 6061-T6 ROUND TUBE (1 REQ'D)  
 dl=63-7/8"



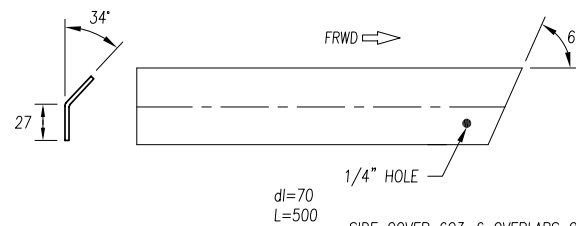
**3** **OUTSIDE FLASHING**  
 t=.025" 6071-T6 (2 REQ'D)



**4** **INSIDE ANGLE**  
 t=.040" 6061-T6 (2 REQ'D)

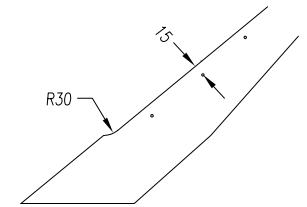


**5** **INSIDE FLASHING**  
 t=.025" 6061-T6 (2 REQ'D)

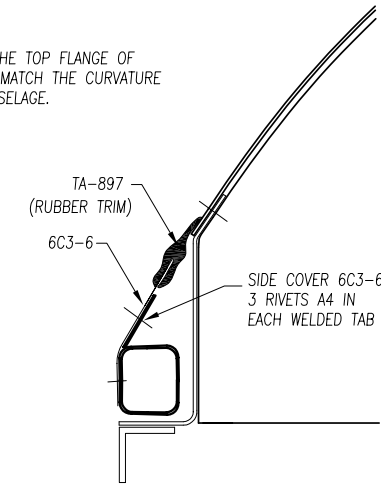
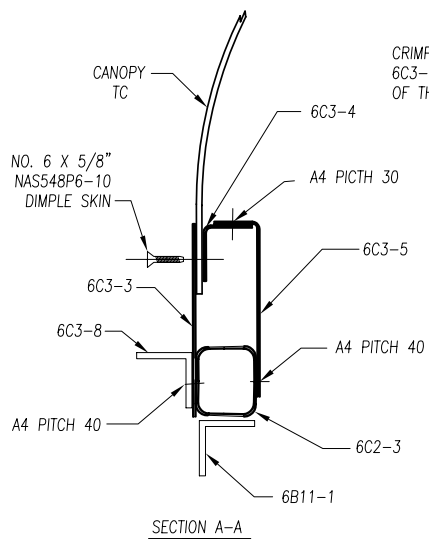


**6** **SIDE COVER**  
 t=.025" 6061-T6 (2 REQ'D)

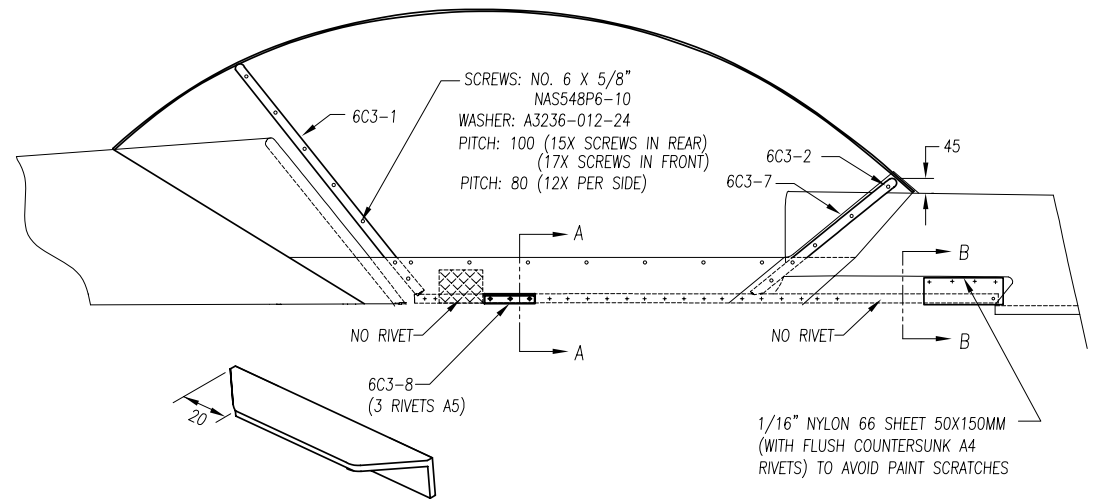
SIDE COVER 6C3-6 OVERLAPS ON O/B SIDE OF HINGE ANGLE 6C1-2



**7** **FRONT FLASHING**  
 t=.025" 6061-T6 (1 REQ'D)  
 210 X 1600

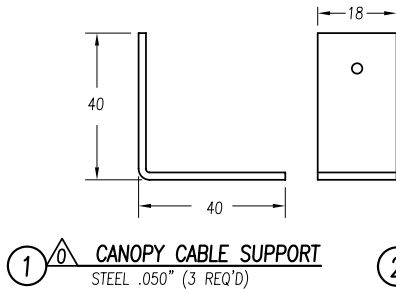
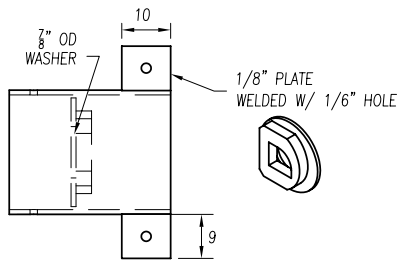


**TC** **PLEXI CANOPY BUBBLE**  
 t=1/8" (1 REQ'D)

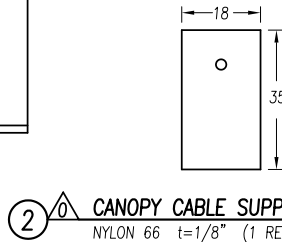


**8** **EXTRUSION HANDLE**  
 EXT. 3/4X3/4X.093" 6061-T6  
 LENGTH=100 (2 REQ'D)

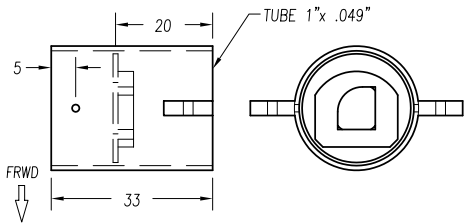
<b>ZODIAC</b> CH 601 XL	CANOPY FRAME INSIDE & OUTSIDE FLASHING	<b>6-C-3</b>
	copyright © 2002 CHRIS HEINTZ zenithair.com DATE: 01/03	



① **CANOPY CABLE SUPPORT**  
STEEL .050" (3 REQ'D)

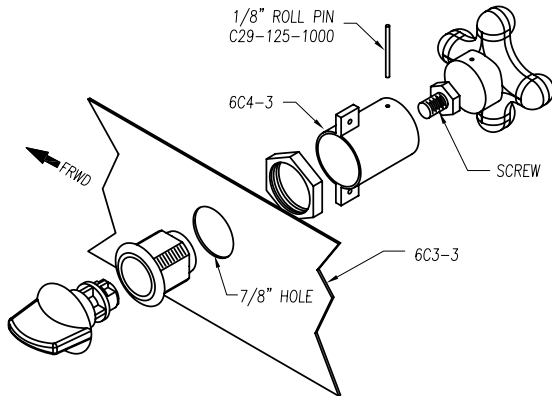


② **CANOPY CABLE SUPPORT FAIRLEAD**  
NYLON 66 t=1/8" (1 REQ'D)



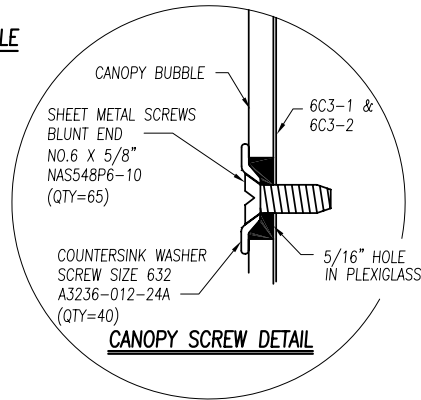
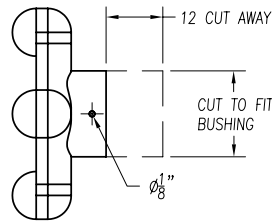
③ **HANDLE CABLE CONNECTOR**  
WELDED ASSEMBLY (1 REQ'D)

6047K13 **INTERNAL CANOPY HANDLE**  
ALUMINUM KNOB (1 REQ'D)

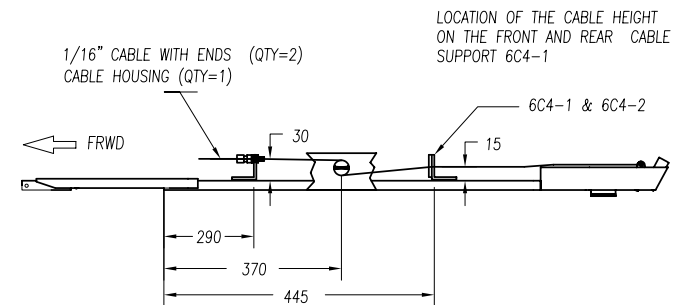
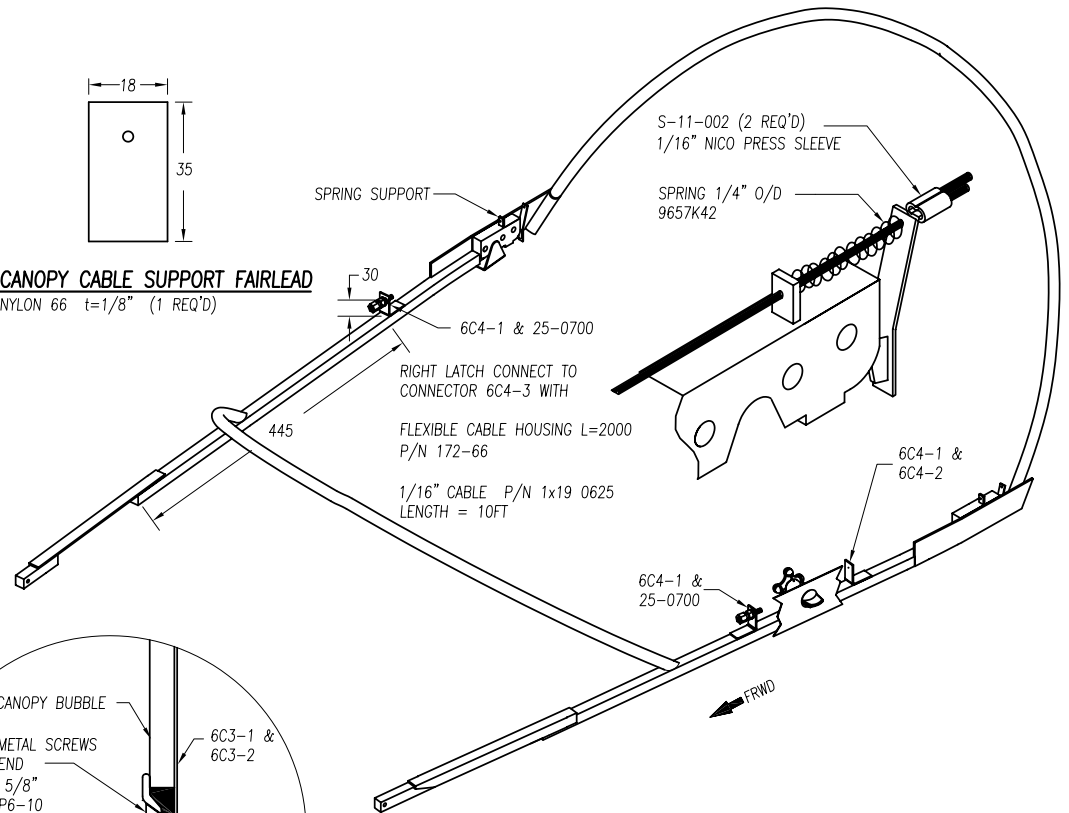


80625A36 **EXTERNAL HANDLE ASSEMBLY**  
ASSEMBLY W/ NUTS (1 REQ'D)

25-0700 **CABLE STOP ADJUSTER WITH SLEEVE**  
ASSEMBLY W/ NUTS (2 REQ'D)



FIRST DRILL #40 PILOT HOLES THROUGH THE PLEXIGLASS BUBBLE INTO THE CANOPY TUBE FRAME, REMOVE THE BUBBLE FROM THE FRAME, USE A UNI BIT TO OPEN THE PILOT HOLE TO 5/16" DIAMETER.



ZODIAC  
CH 601 XL

CANOPY RELEASE  
CANOPY SCREWS & SEALS

6-C-4