



INSIDE FLASHING
6C3-5

Stretch the top flange to bend the flashing to follow the curvature of the fuselage side.



INSIDE ANGLE
6C3-4

Trim the ends of the inside flashing to fit between the front and rear canopy frame tube.

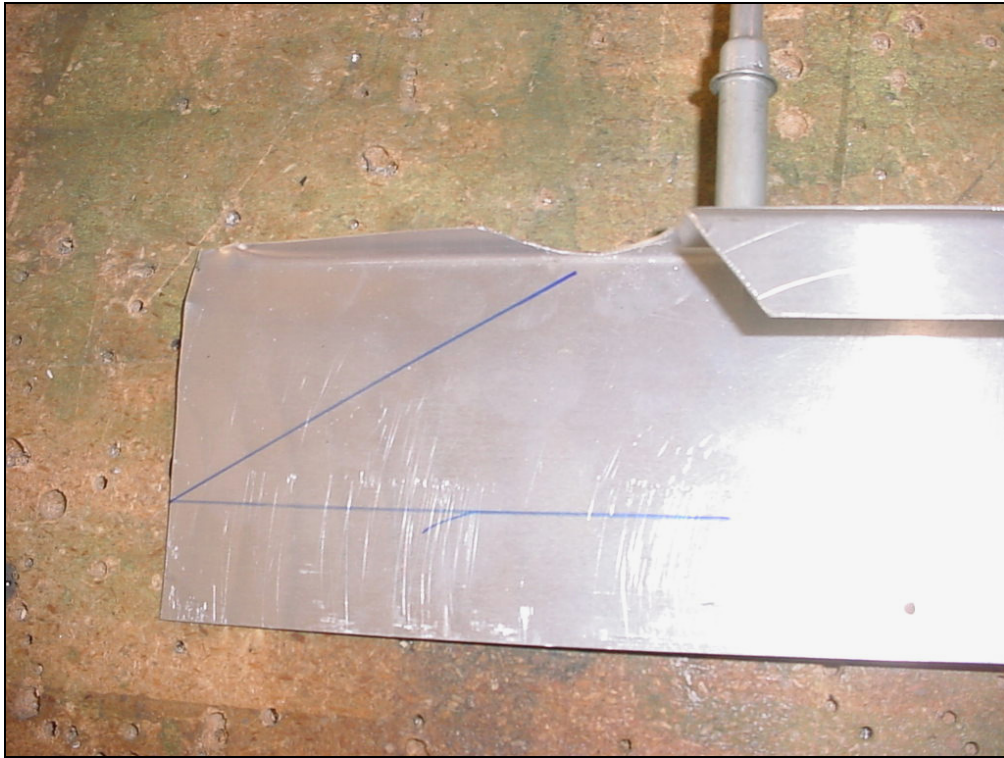


Layout intervals of 40mm along the radius of the inside flange 6C3-4
Crimp the side flange along the 40mm marks



Detail of cutout in top flange to make room for the front tube.

Clamp the top flanges together.
Layout the rivet pitch between the crimps.



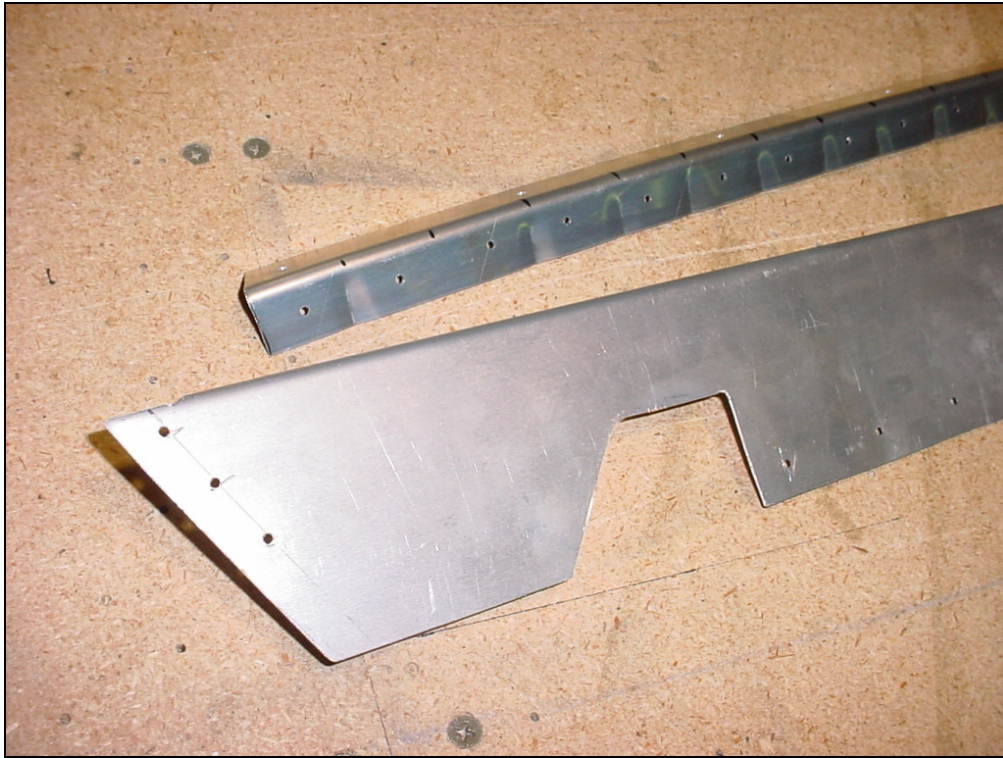
Ref. Cross section A-A
bottom right diagram on
drawing 6-C-3

Detail of front end
3 rivets A4 inside flashing to the front canopy tube 6C3-2

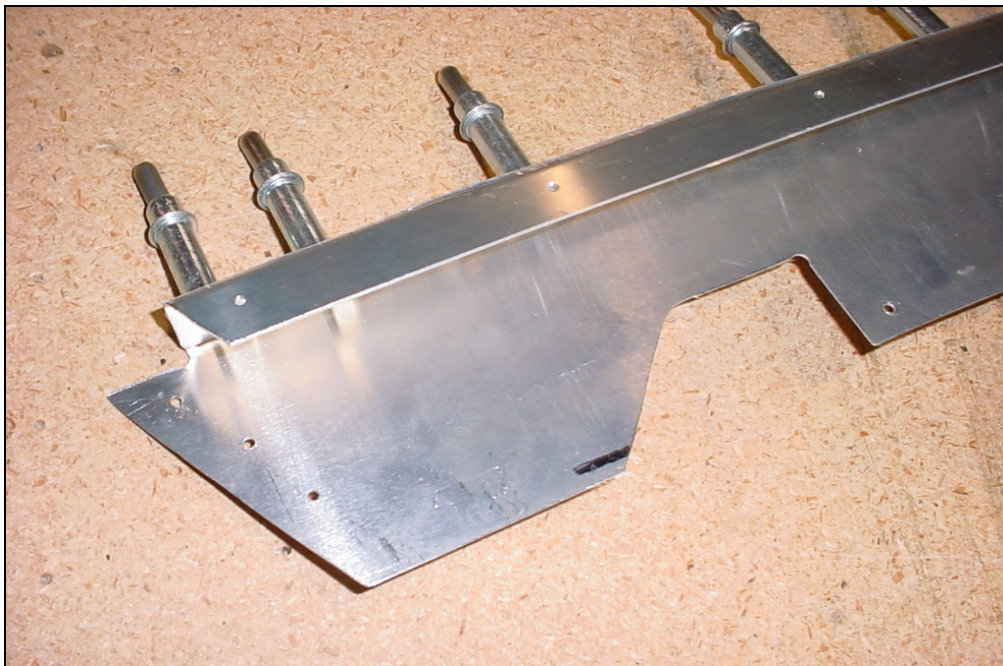


Front right inside flashing

3 rivets A4 inside flashing to the front canopy tube 6C3-2



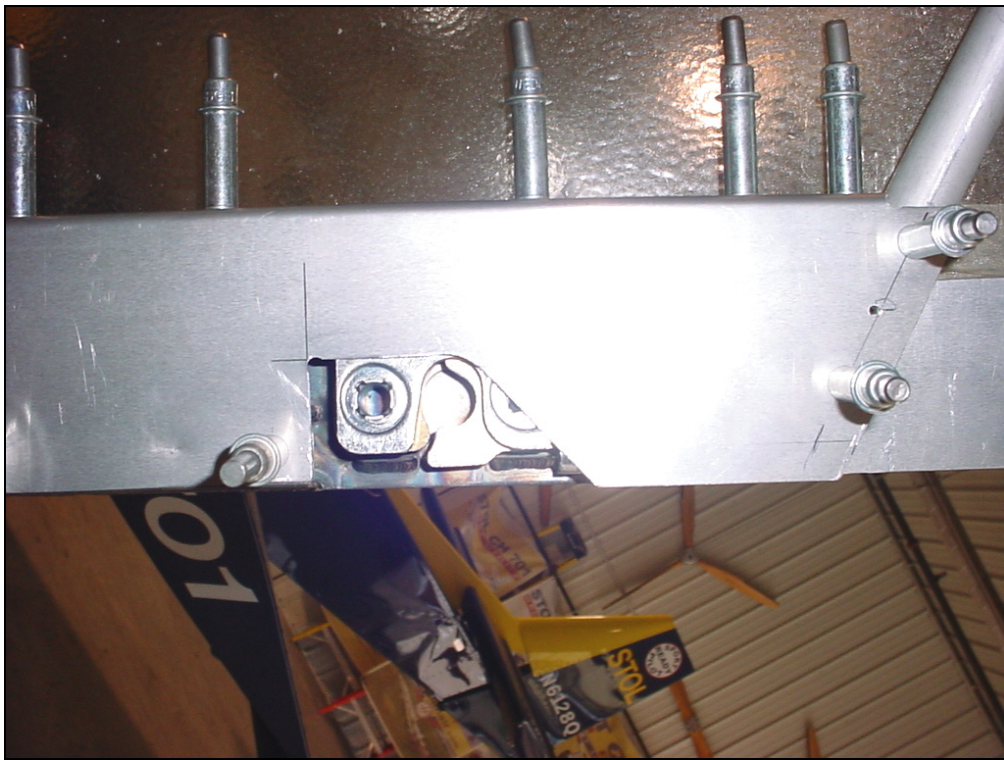
3 rivets A4 inside flashing to the 7/8" tube welded on the canopy frame.



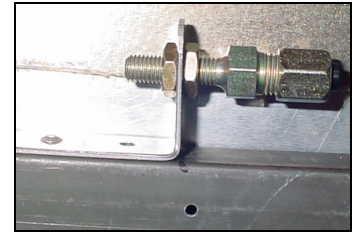
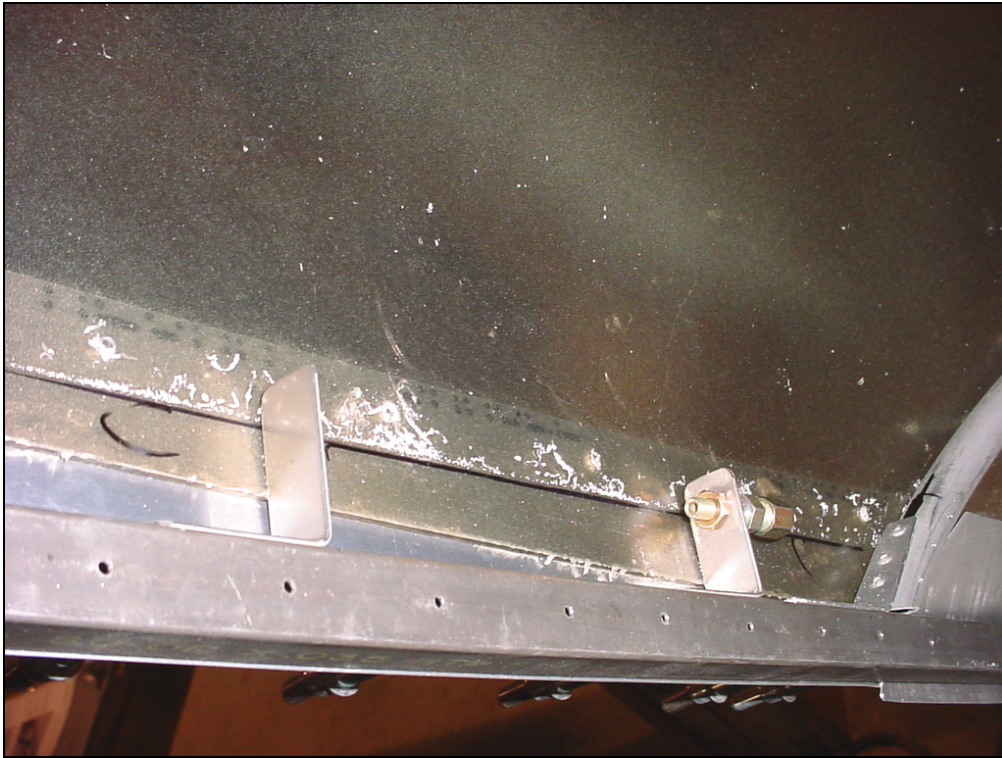
Inside Angle 6C3-4 clecoed to the inside flashing 6C3-5



Top rivet line between the crimps.



Inside flashing; right side (rear)



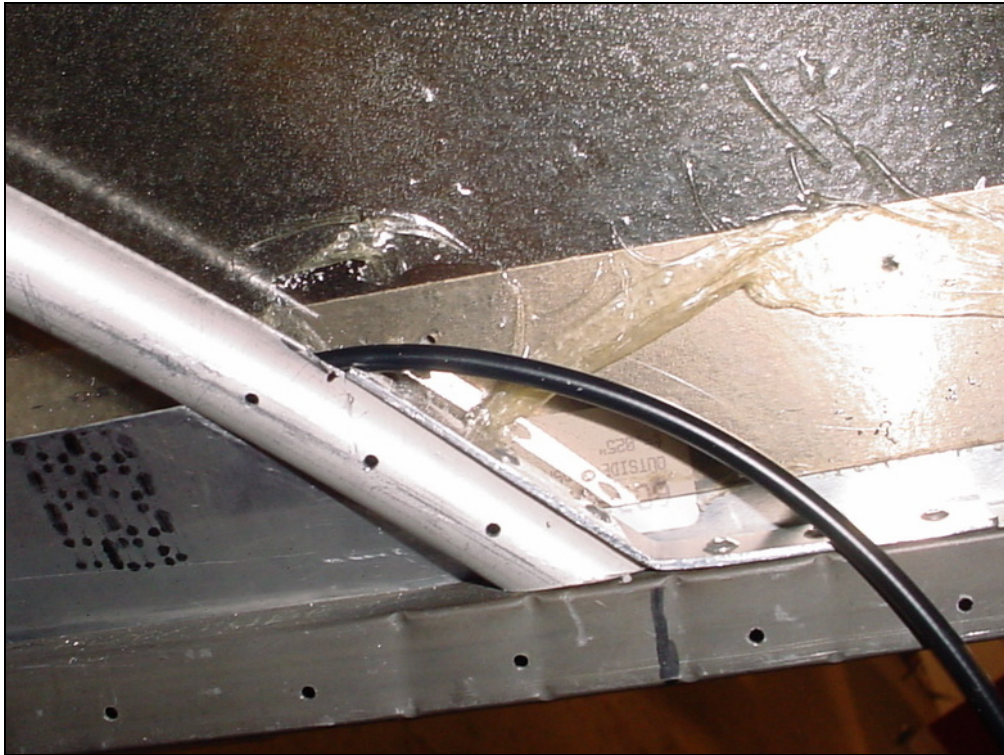
Cable stop adjuster with sleeve P/N 25-0700

Canopy cable support 6C4-1. Ref. bottom diagram on drawing 6-C-4

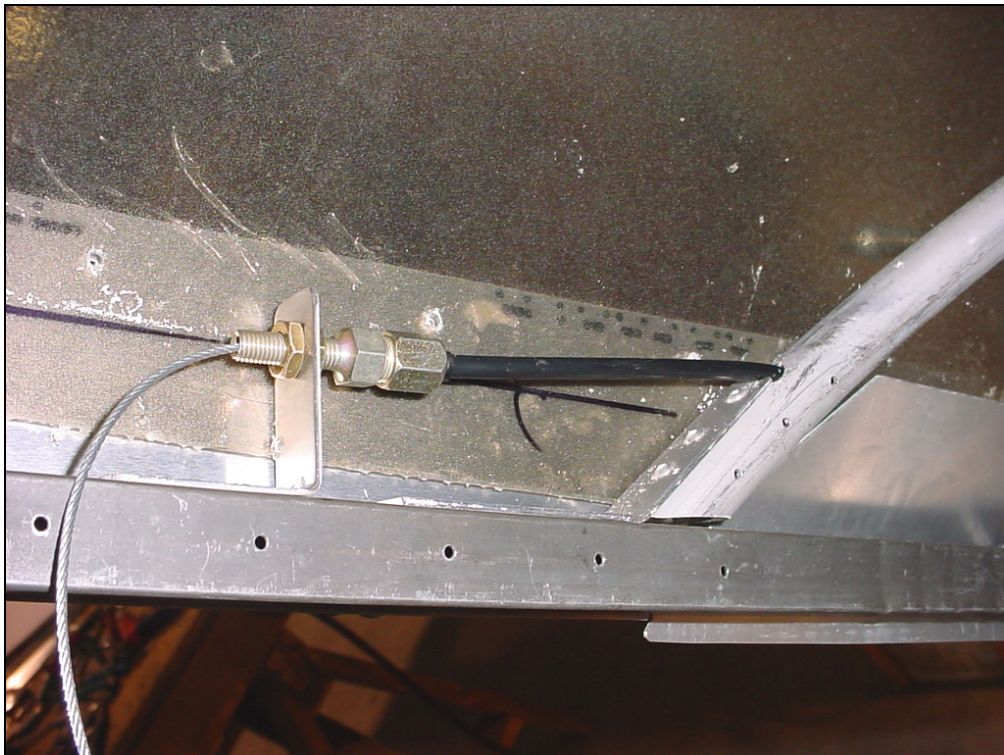


With a file open the hole along the bottom and top (elongated hole for cable housing)

Drill a 3/16" in the front tube 6C3-2 just above the gusset 6C3-9



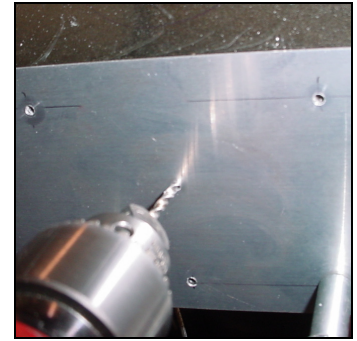
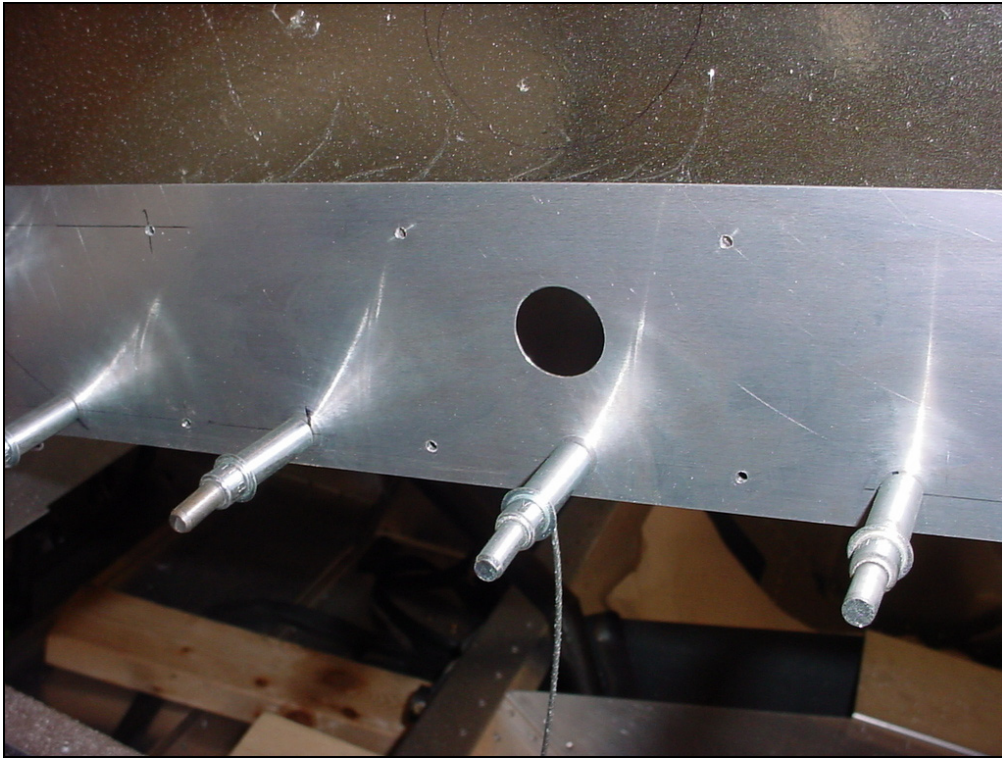
Flexible cable housing P/N 172-66 through front tube frame 6C3-2



Install the flexible cable housing to the cable stop adjuster with sleeve P/N 25-0700



Run a drill bit through the plastic sleeve to fit over the cable housing.



Locate the center of the hangle, 35mm up from the bottom

Drill the 7/8" hole. Ref. bottom left diagram on drawing 6-C-4



Cut the canopy to make room for the hole



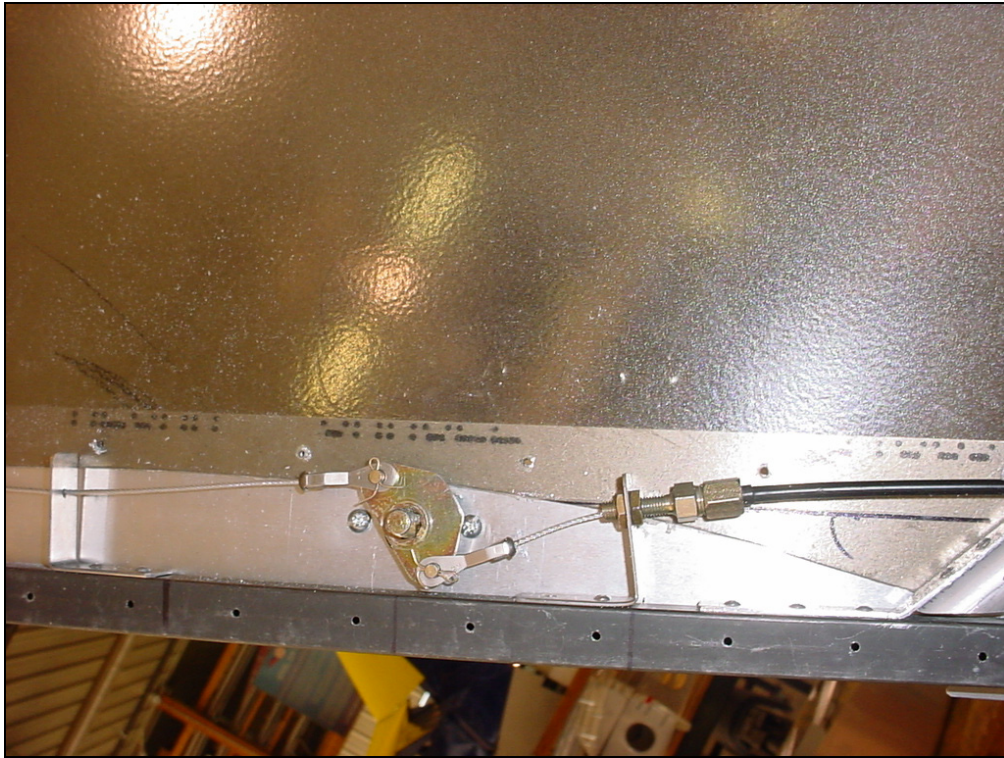
Use a hand grinder to cut bubble canopy.



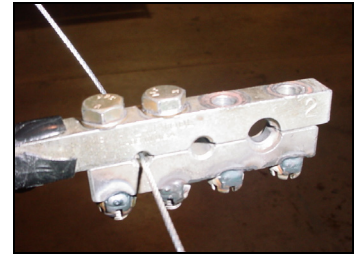


Larger handle with lock and key P/N 1226A62

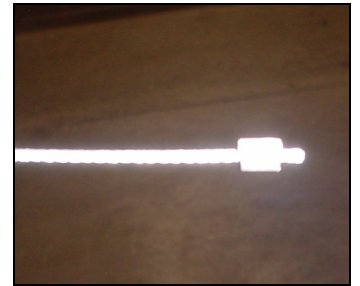




STRAP FORK END P/N SA262-2 with CLEVIS PIN.



Nicopress tool hand swedge
P/N HST-2
Wicks Aircraft Supply
www.wicksaircraft.com



Nico press the stop sleeve P/N 871-1C



Throttle stop P/N 1548 Or Nico press sleeve.

