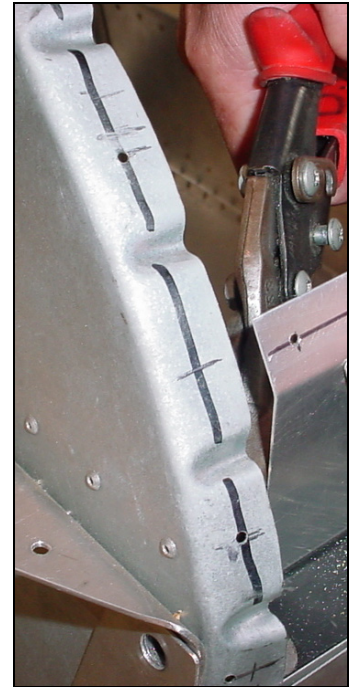
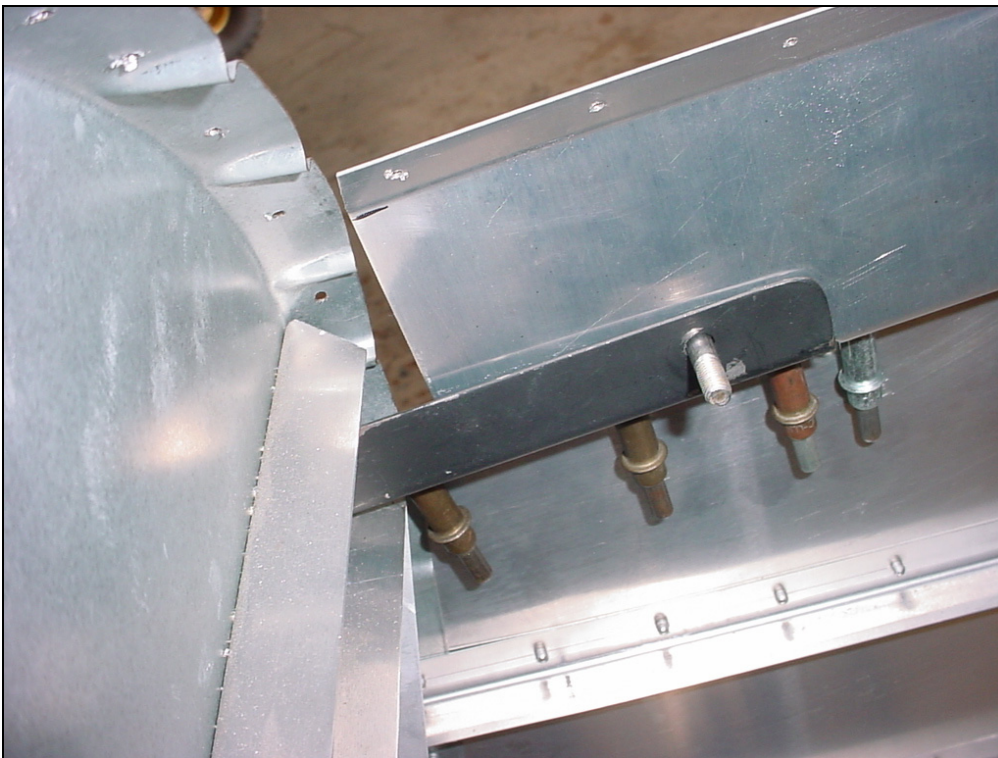




Taper the top corner of the firewall reinforcement 6B7-2



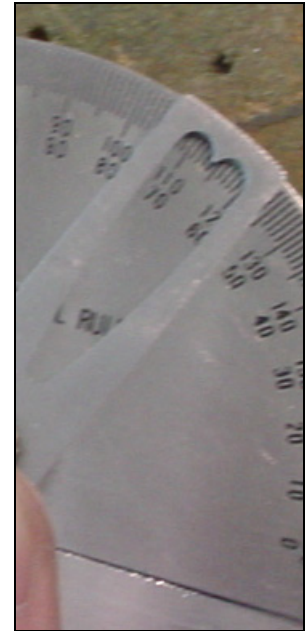
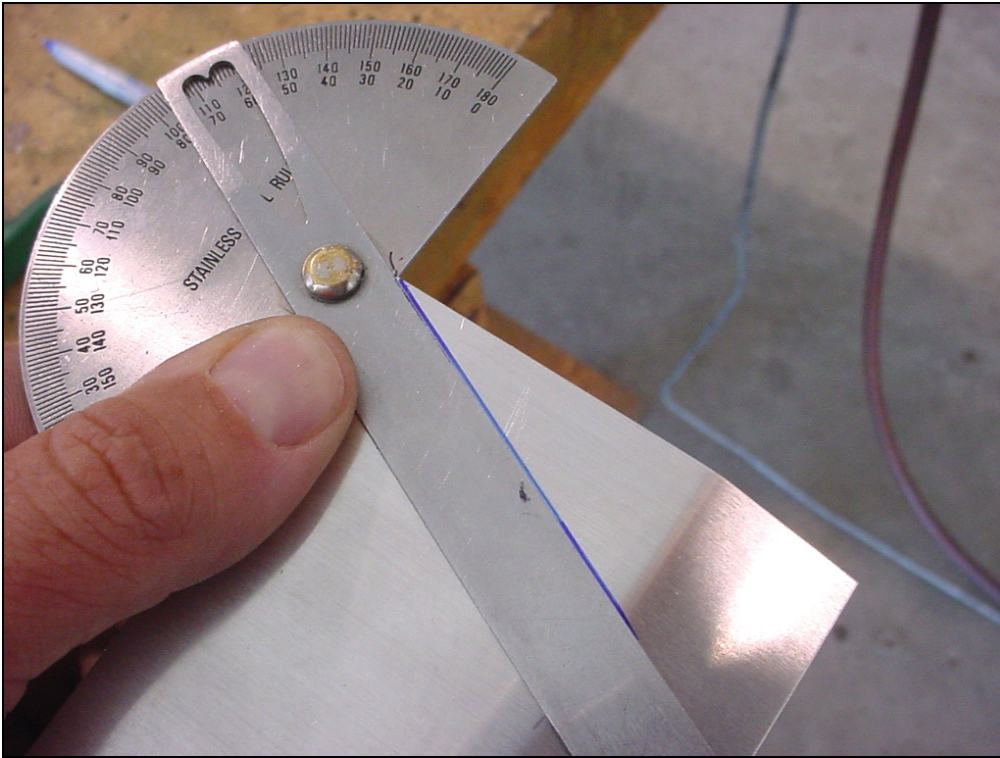
Use the snips to cut corner of flange.



Corner would otherwise interfere with rubber trim when canopy is in the open position.

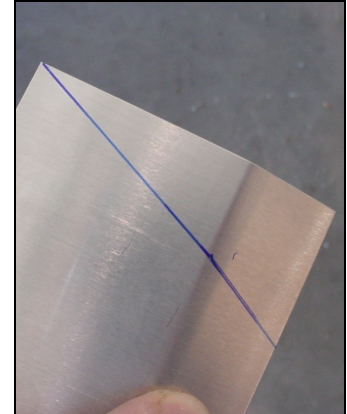
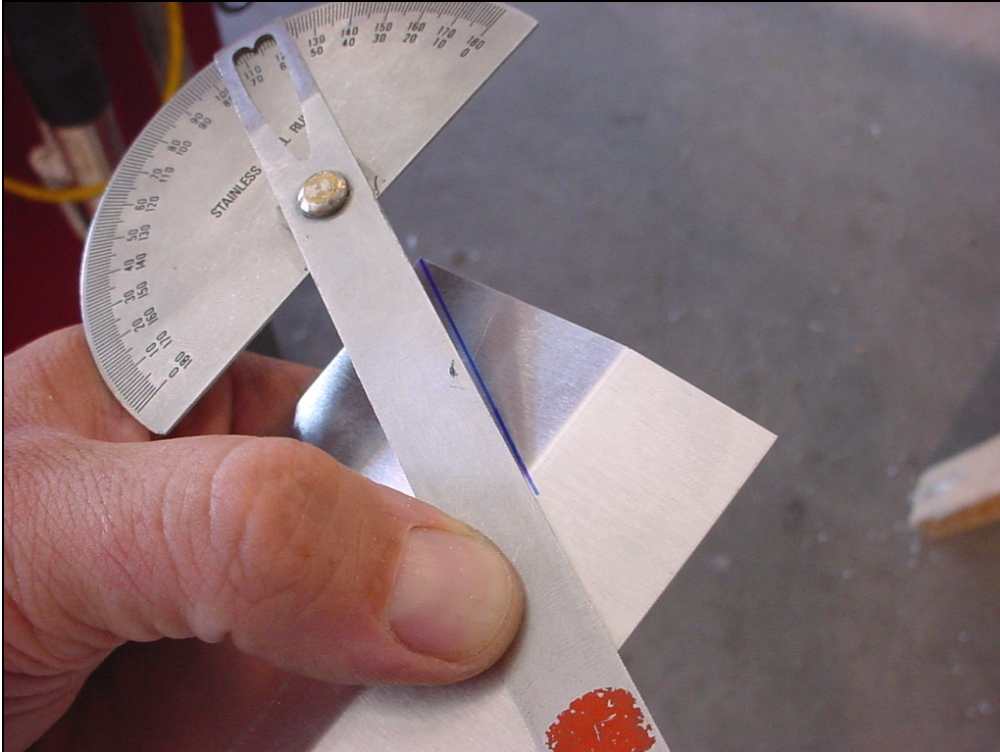


Detail of left side



SIDE COVER
6C3-6

Set the protractor at 66 degrees (open angle of canopy frame, page 1 section 6-C-2). Reference top edge, line up the edge with the front top corner and Mark a line.



Cut line.

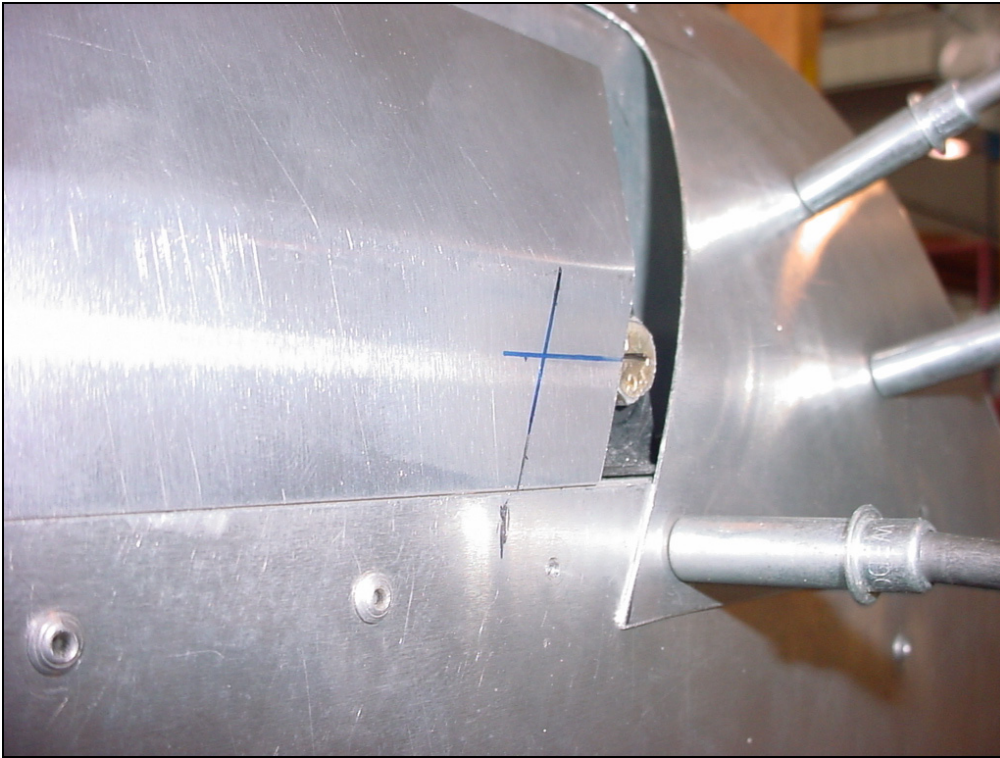
Push down on the protractor to continue the line on the bottom flange.



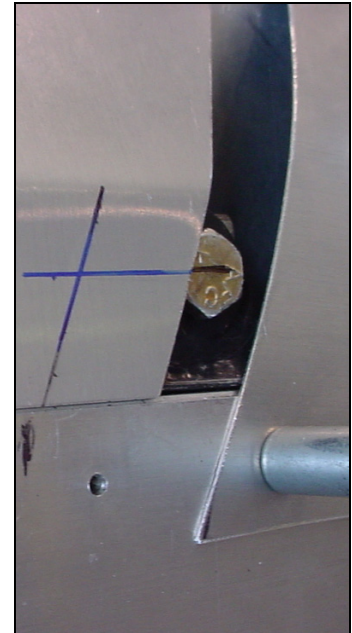
Position the side cover 6C3-6 on the canopy frame.



Detail of aft edge.
Line up the bottom of the cover flush with the top of the longeron.



Line up the bottom edge of the cover flush with the top of the longeron.
Mark the center of the hinge bolt on the cover.

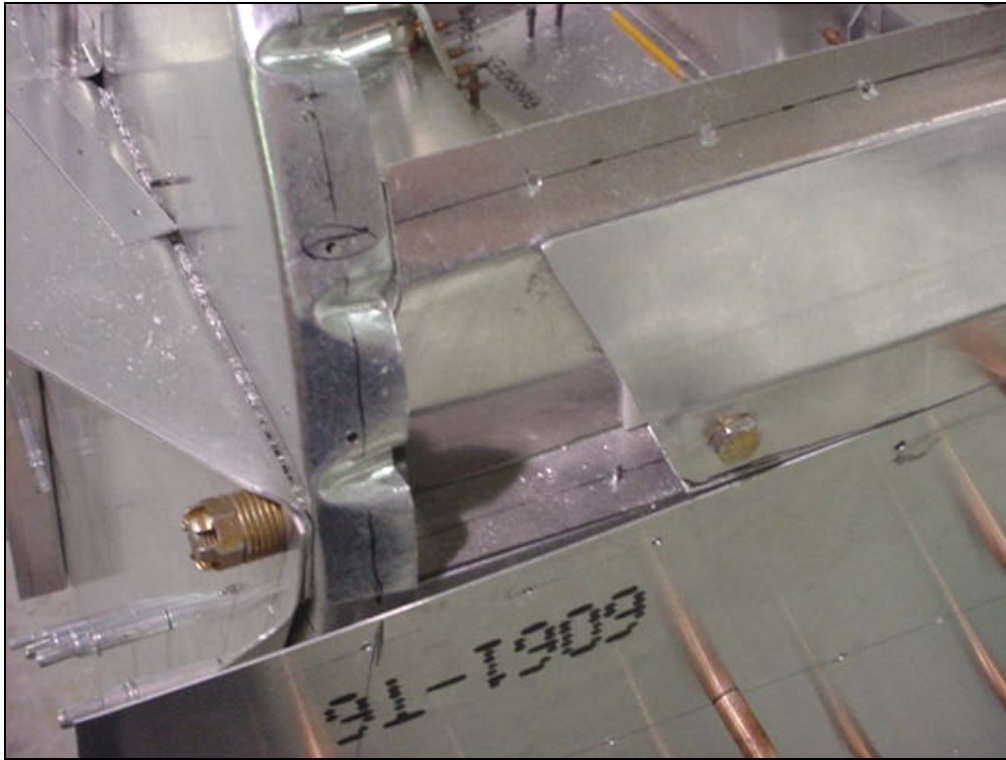


Layout a parallel line to
the front edge at 17mm



Drill the 1/4" hole



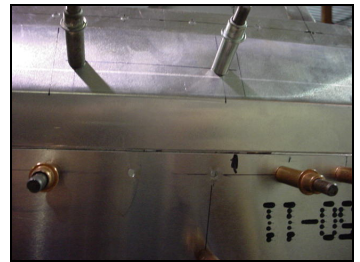


Side frame in the closed position.

Insert bolt.

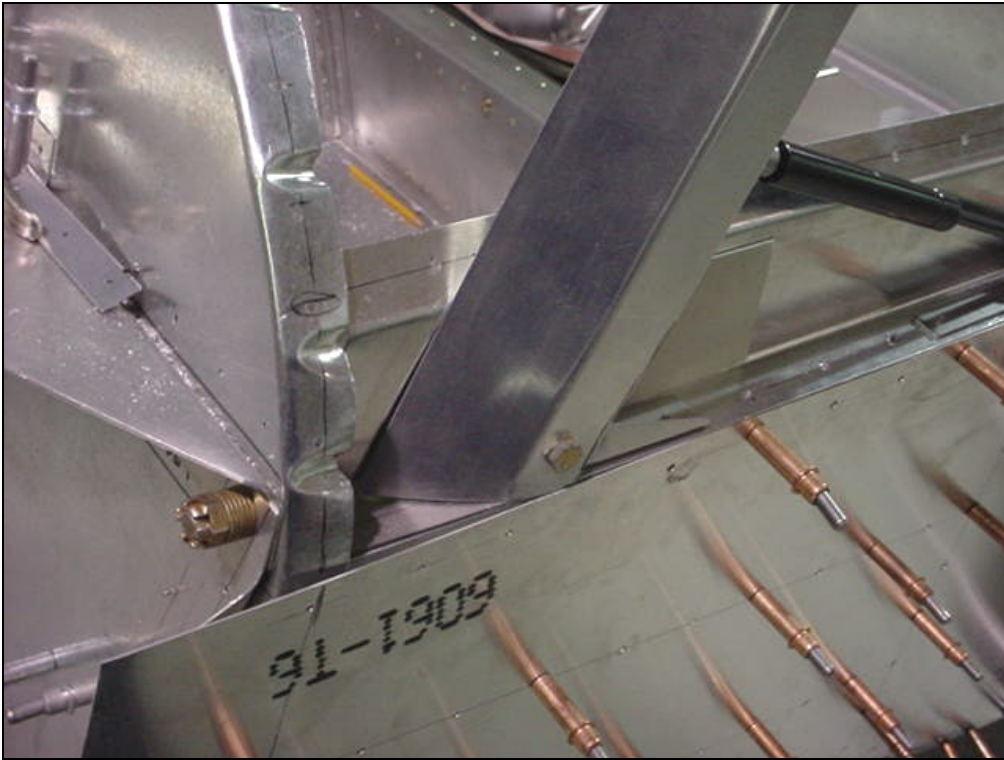


Inside view of clecoes on welded tab.

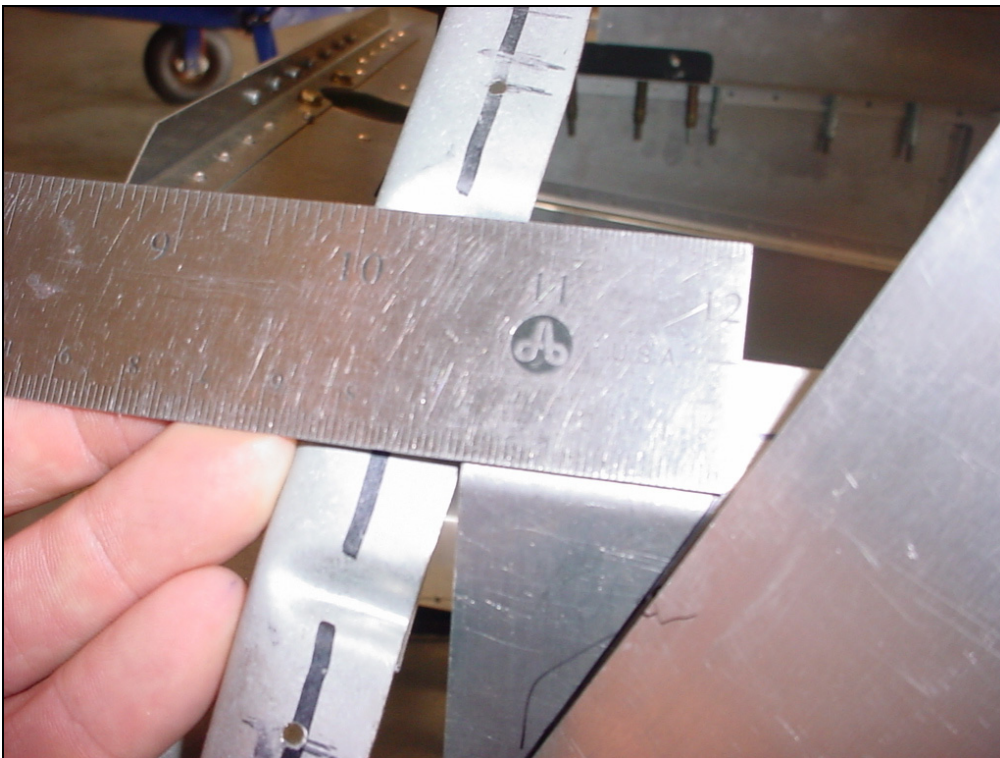


With the canopy in the closed position, drill a hole at each end of the welded tab on the cabin side frame.

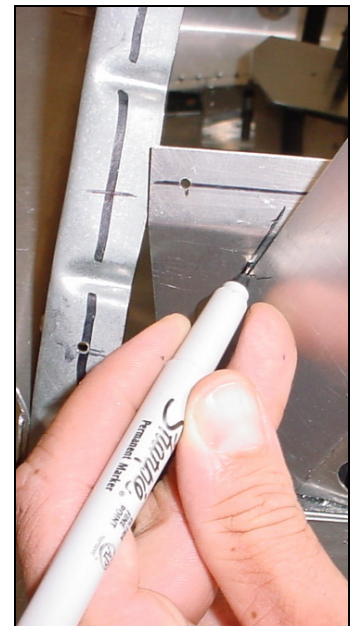
3 RIVETS A4



CHECK: The front edge of the cover does not touch the longeron. Remove the top skin for better view.



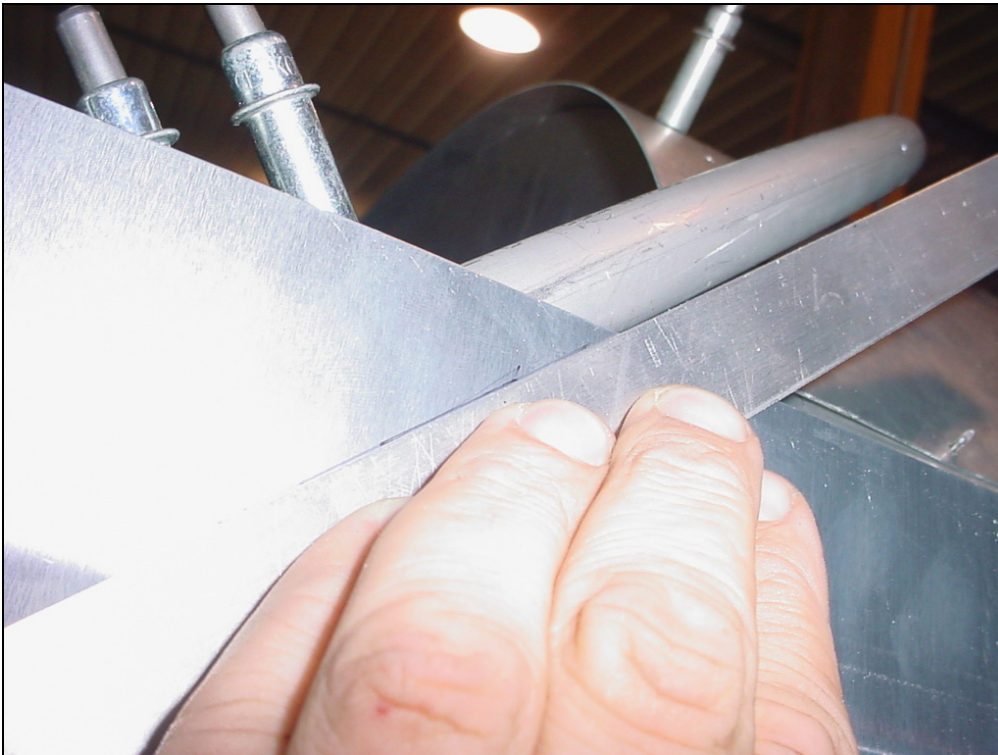
Measure the distance from the firewall rivet line to the edge of the cover. Check the size of the cutout in the forward top skin. Note: the cutout will have to be larger to make room for the rubber trim.

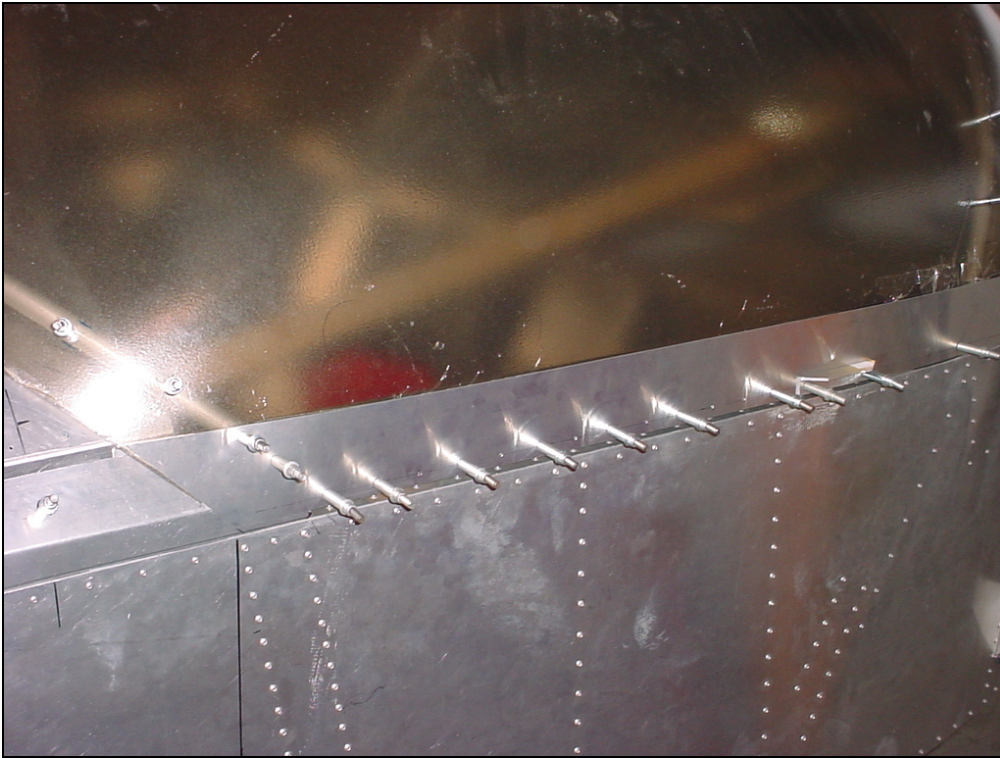


Trace the top edge of the cover 6C3-6 on the panel side angle 6C1-1



Trim the aft edge of the side cover even with the front edge of the tube frame.





OUTSIDE FLASHING 6C3-6

Drill and cleco flashing to the canopy side frame.

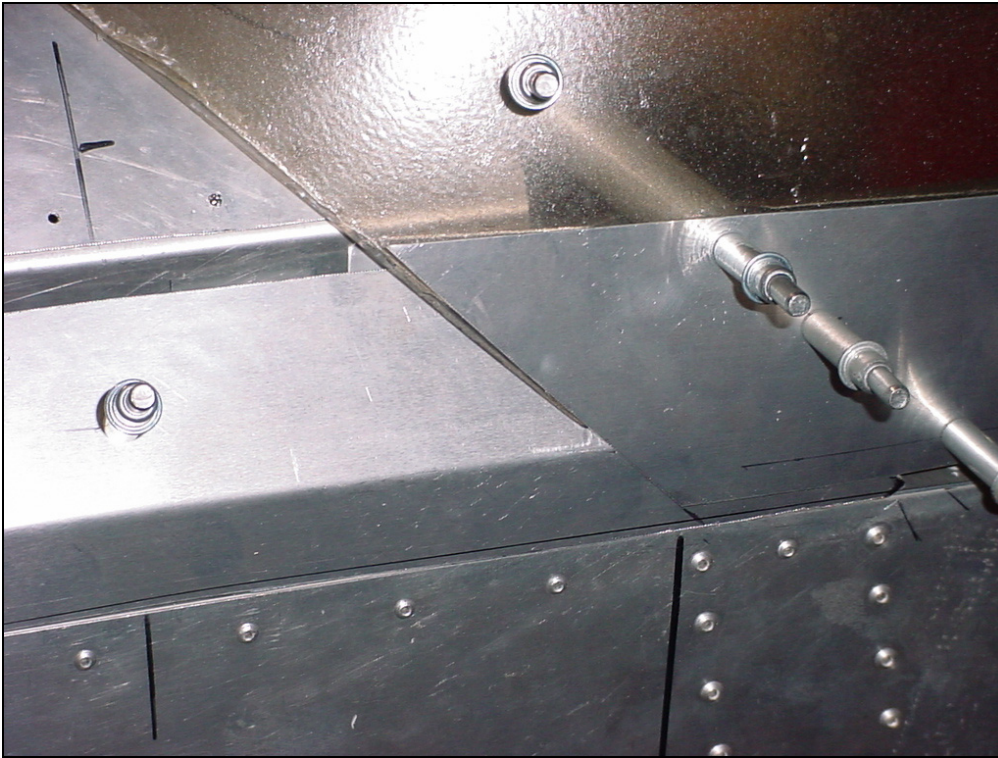
Note: position the extrusion handle 6C3-8 in line with the latch.

Position the outside flashing flush with the bottom edge of the canopy side frame.

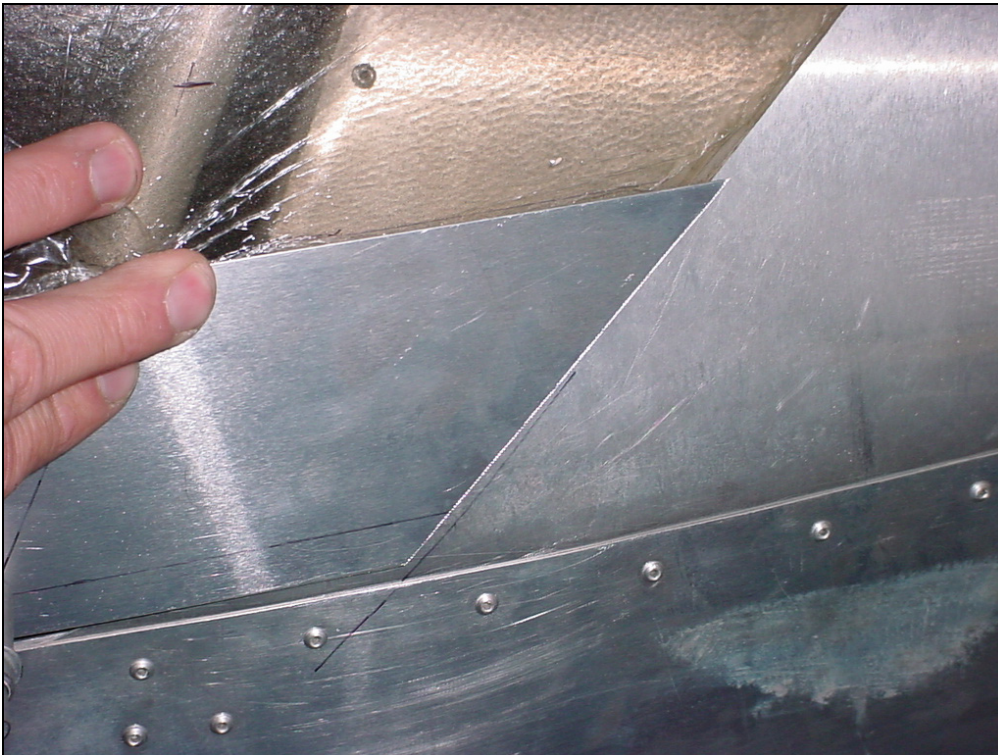
Some gap between the bottom of the canopy frame and the longeron is acceptable.



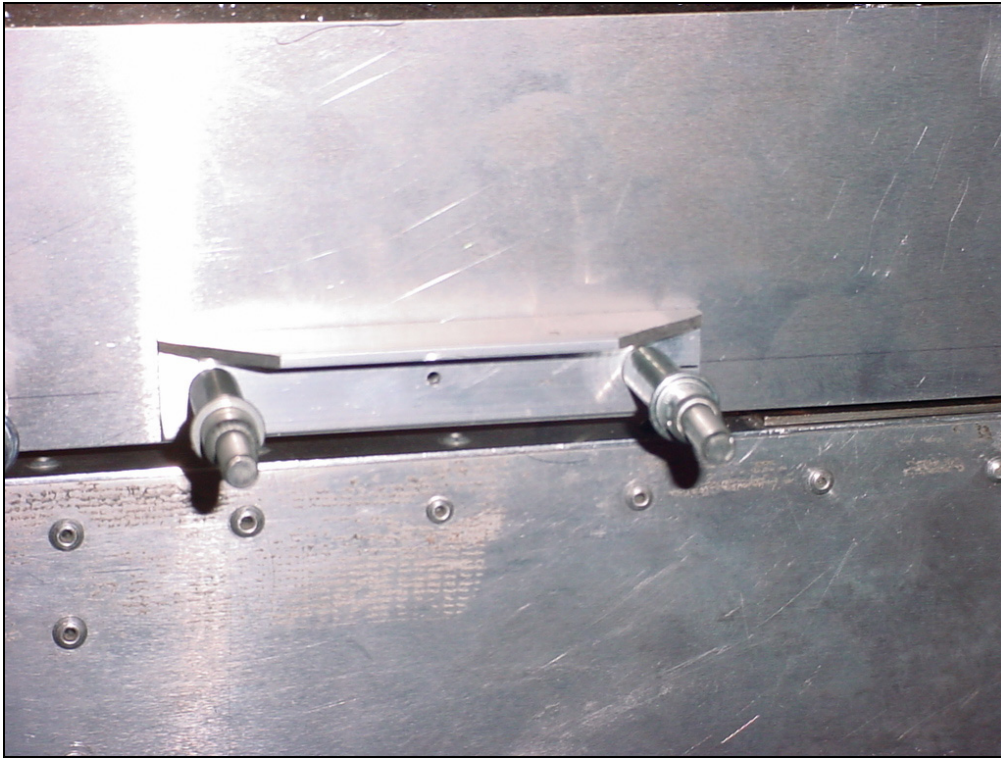
Front edge.



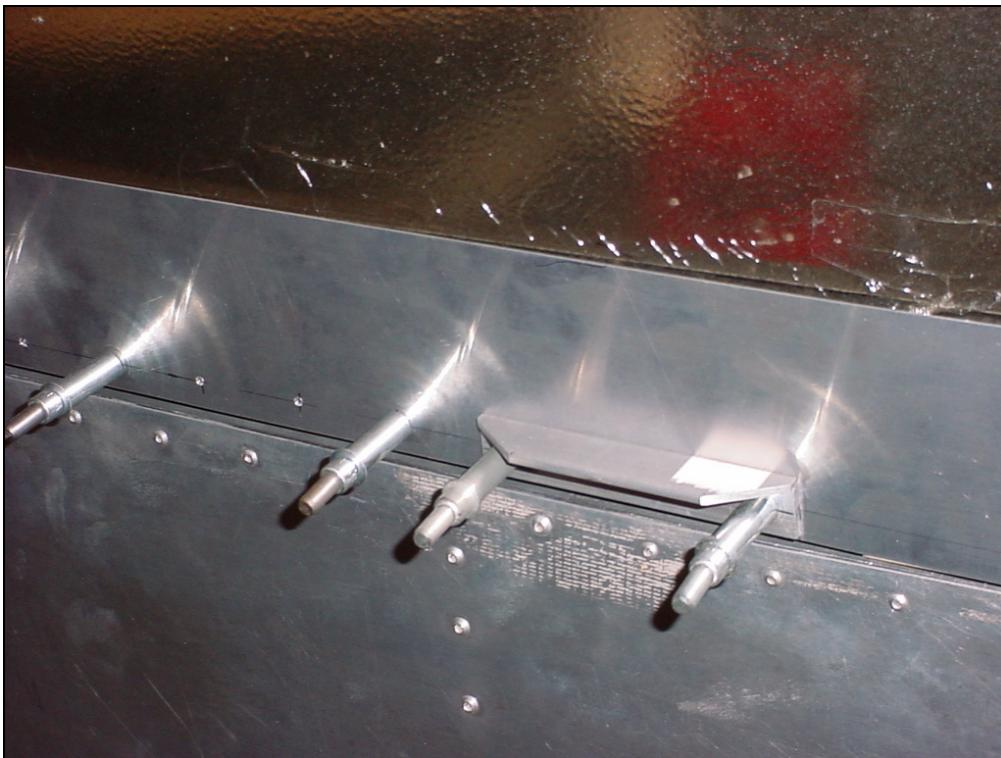
Trim the front edge of the flashing flush with the edge of the canopy.



Aft edge of flashing trimmed flush with the edge of the canopy.



Extrusion handle 6C3-8



Extrusion handle 6C3-8 positioned in line with the latch. Ref. top right diagram on drawing 6-C-3