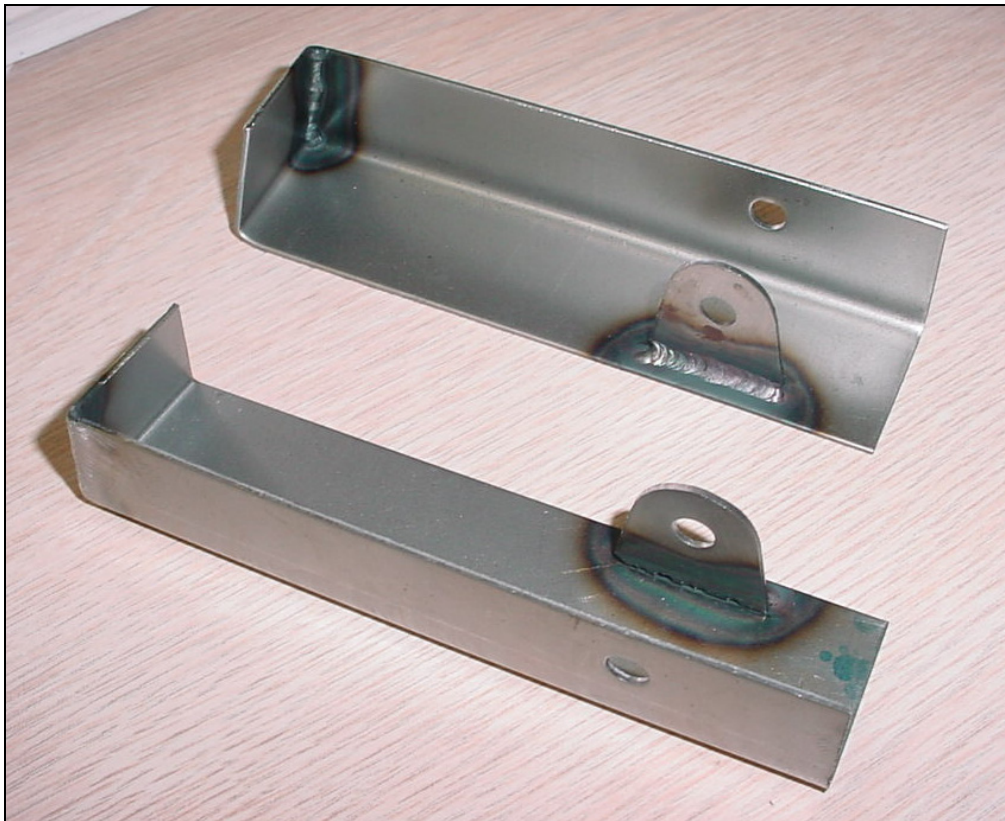


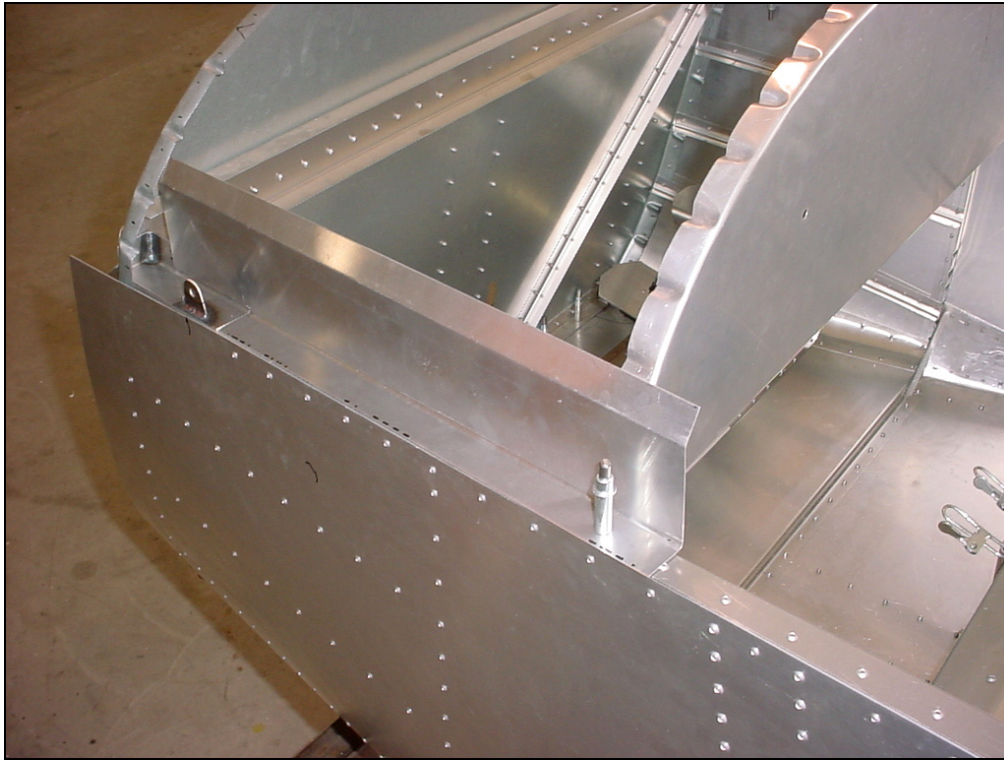


Forward opening canopy
Tapered



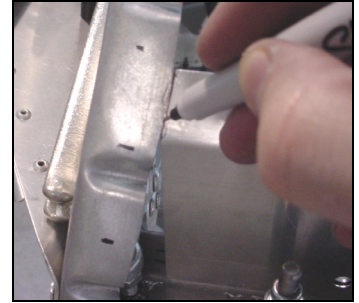
The 3/8" hole in the
**upper engine mount
fitting & canopy hinge
6B6-4** is drilled before
the part is installed to the
upper front longerons
6B11-2 Ref. section 6-B-
11B page 6 of 12

Upper engine mount fittings 6B6-4 Revision 3 (replaces 6C1-2 and 6C1-3)

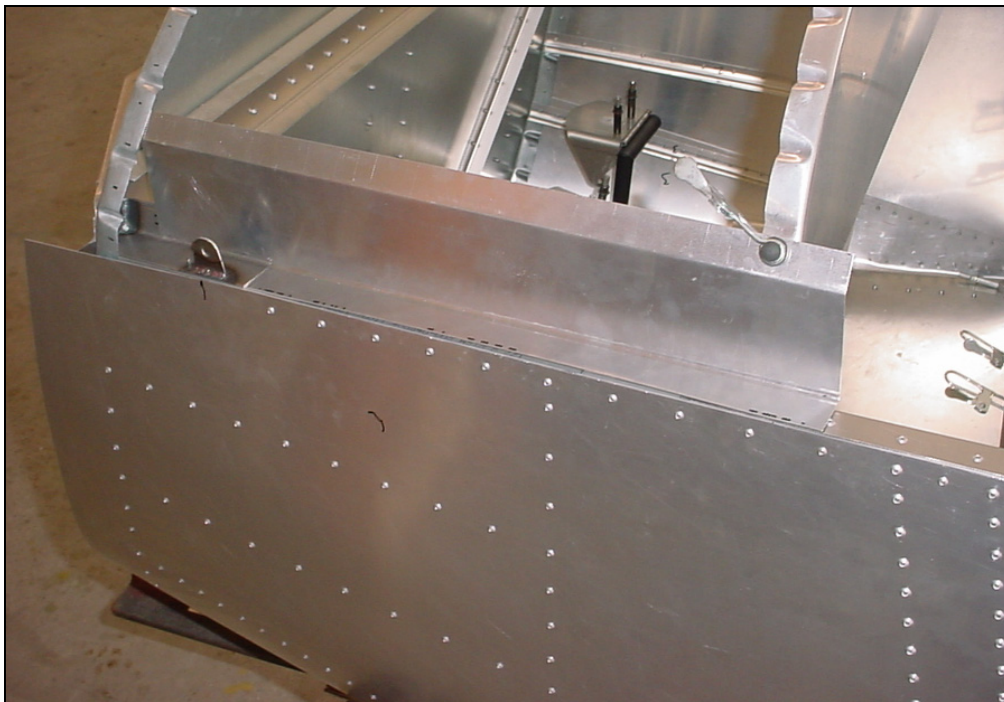


Cutout in the bottom flange to make room for the upper engine mount fitting.

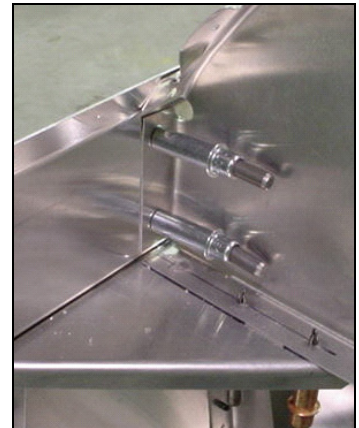
**PANEL SIDE ANGLE
6C1-1**



Trim the top flange flush with the aft edge of the firewall flange.

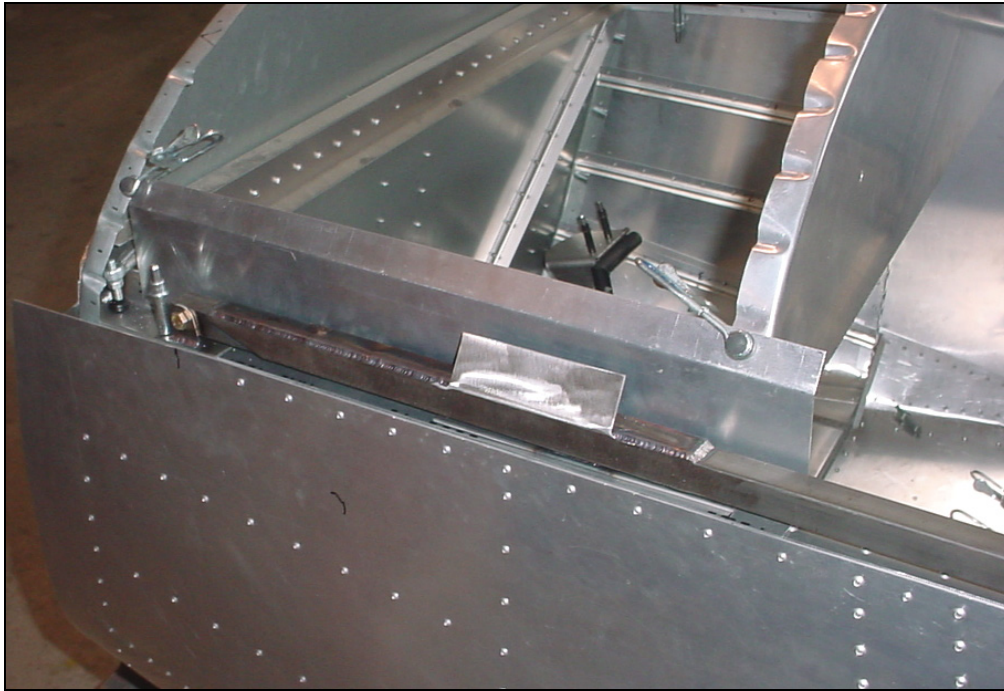


Clamp the top flange to the instrument panel.



Instrument panel: The Side Panel 6C1-1 is riveted to the side of the instrument panel.

3 RIVETS A4

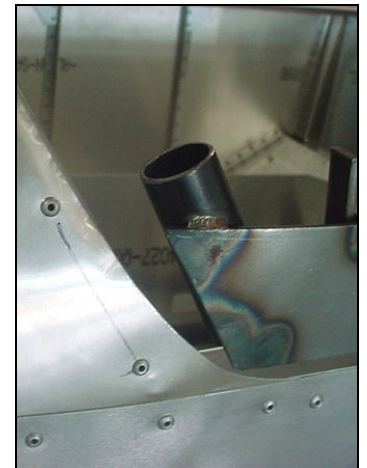


**CANOPY SIDE FRAME
6C2-3**

Back drill the ¼" hole from 6B6-4 into the panel side angle 6C1-1



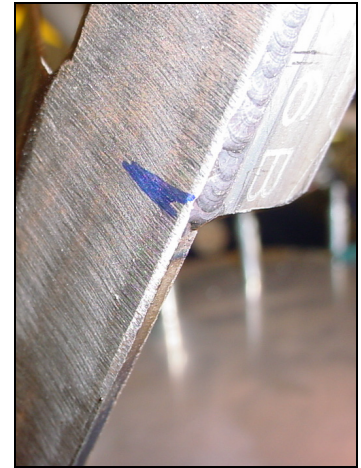
Position the canopy side frame on the fuselage.



Detail of the aft end of the canopy side frame. Check: no interference with the front edge of the middle top skin 6B21-7



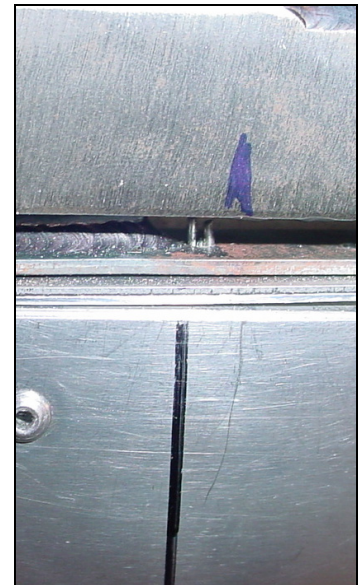
Insert the AN4 bolt for the front pivot.



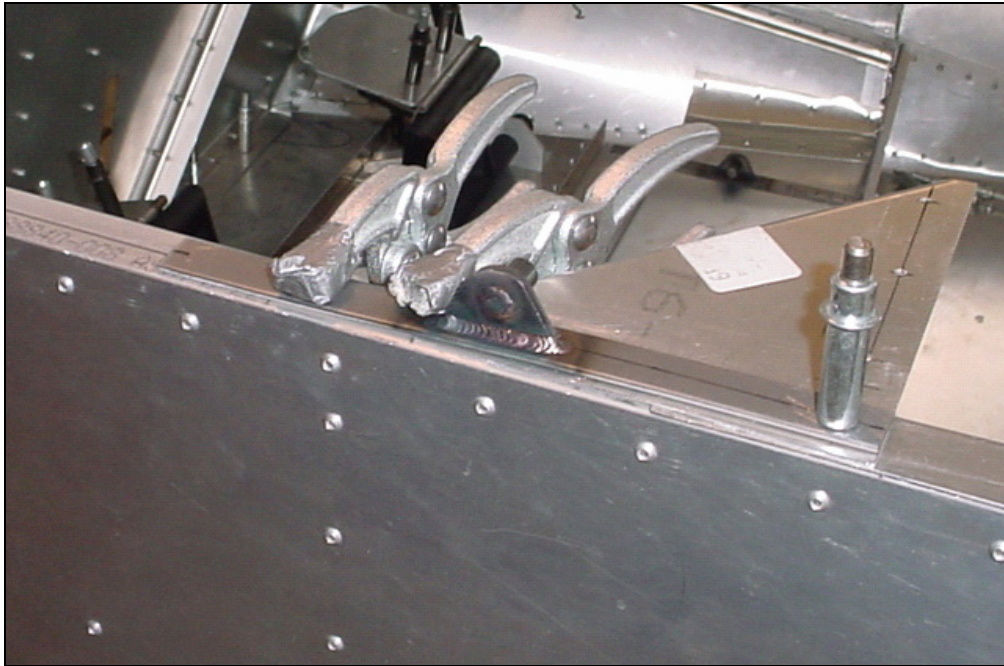
On the side of the canopy frame, mark the front end of the square tube.



Position the bottom bracket 6C2-2 on the fuselage, the front edge is flush with the gusset 6B12-5. Ref top left diagram on drawing 6-C-1. Check that the welded plate with stud does not interfere with the square tube.



With the side frame in the closed position, mark the position of the square tube on the fuselage side skin.

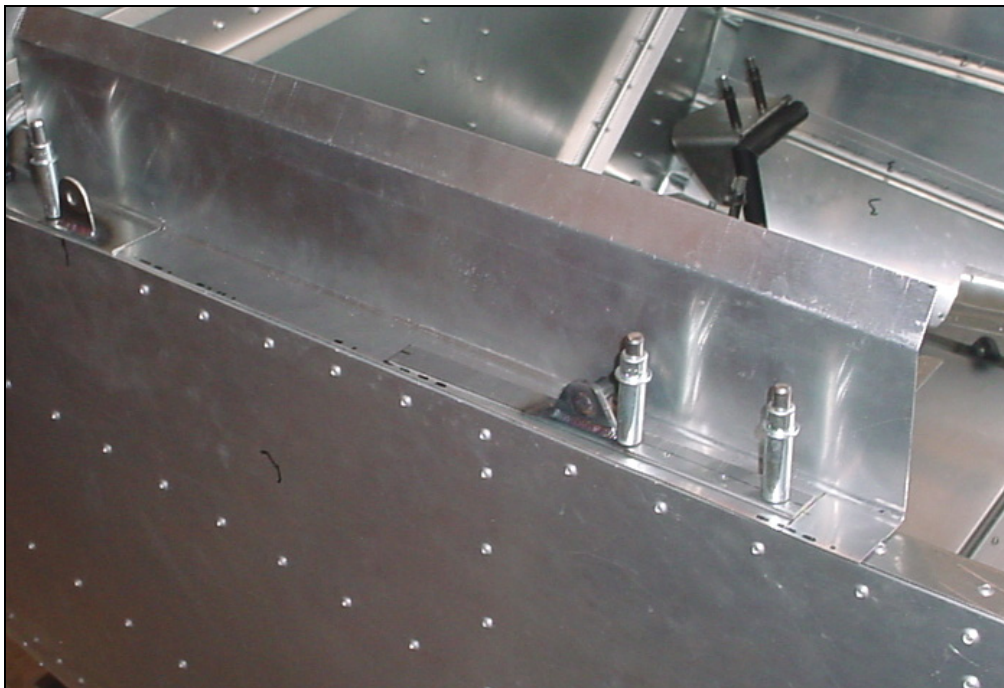


Mark the rivet line on both sides of the Bottom bracket 6C2-2

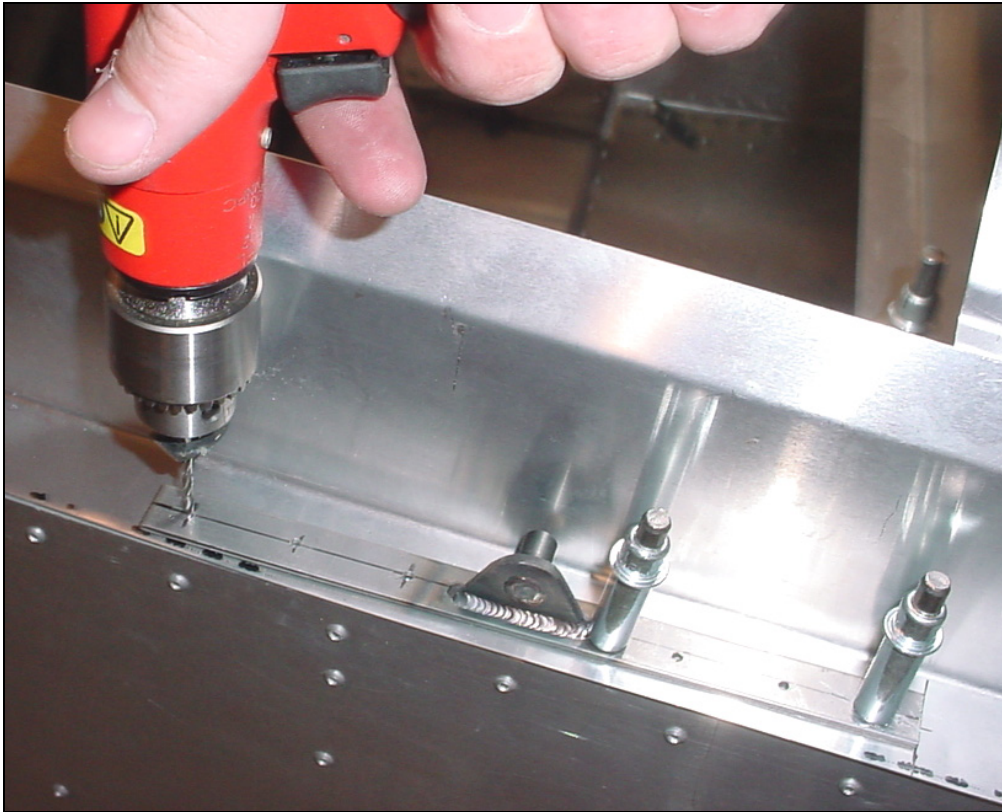
Remove the panel side angle 6C1-1 and the instrument panel gusset 6B12-5 from the fuselage.

Clamp the aft edge of the bracket 6C2-2 flush with the aft edge of the instrument panel gusset. Back drill when the center line is visible.

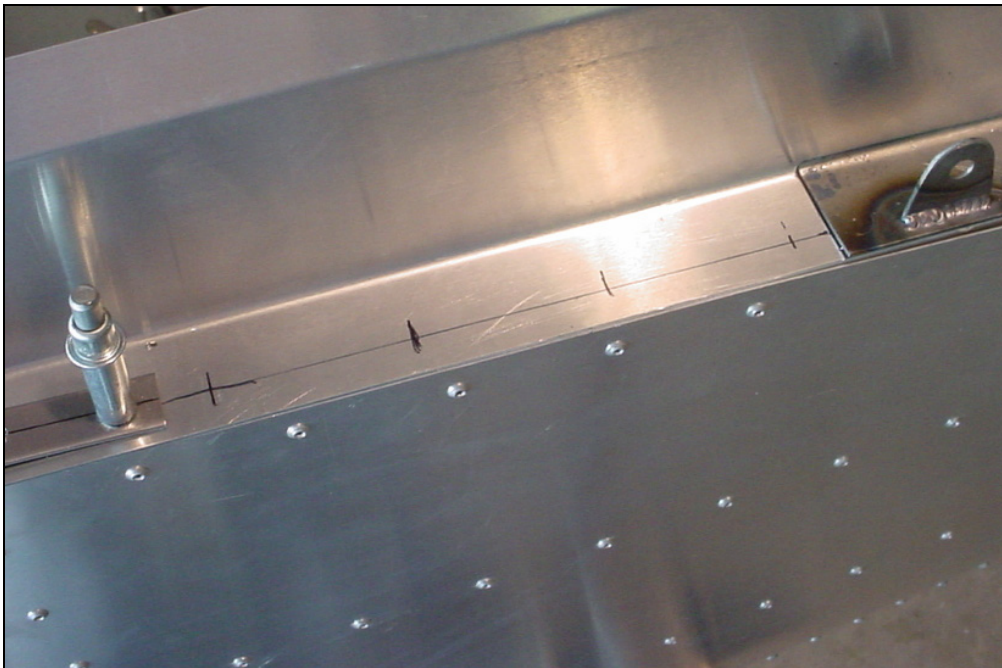
Cleco and clamp assembly to fuselage. Line up with center line of longeron and back drill the remaining hole.



Reinstall the panel 6C1-1



Finish drilling the holes in the bottom bracket 6C2-2



Finish drilling the holes in the bottom flange.



Photo of right side.

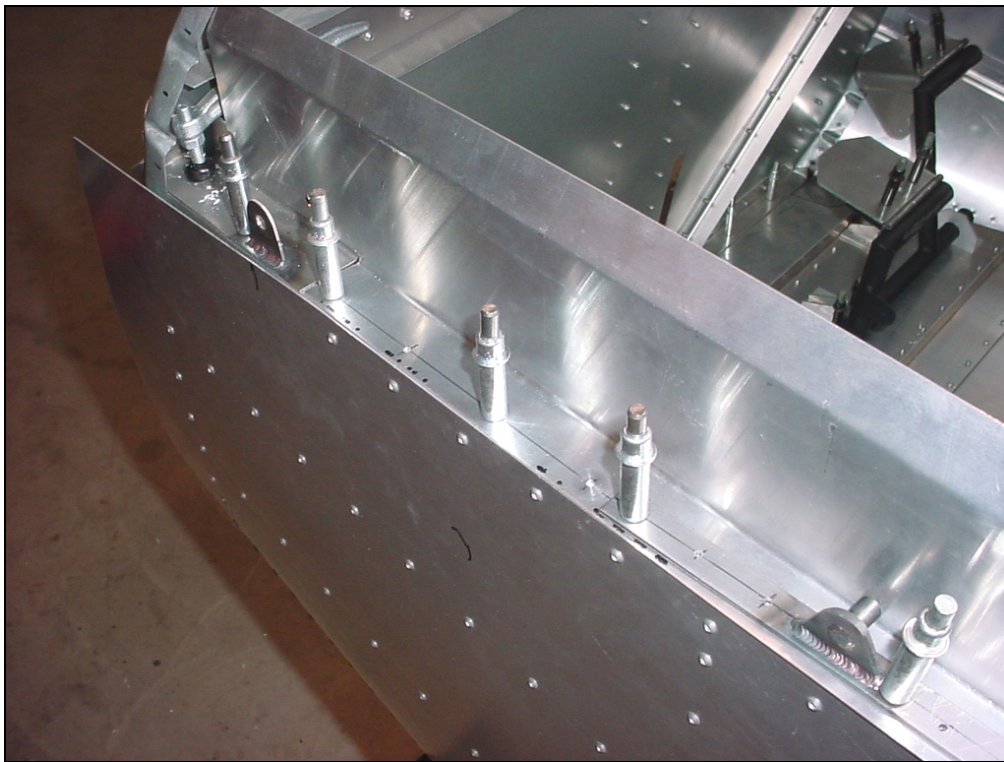
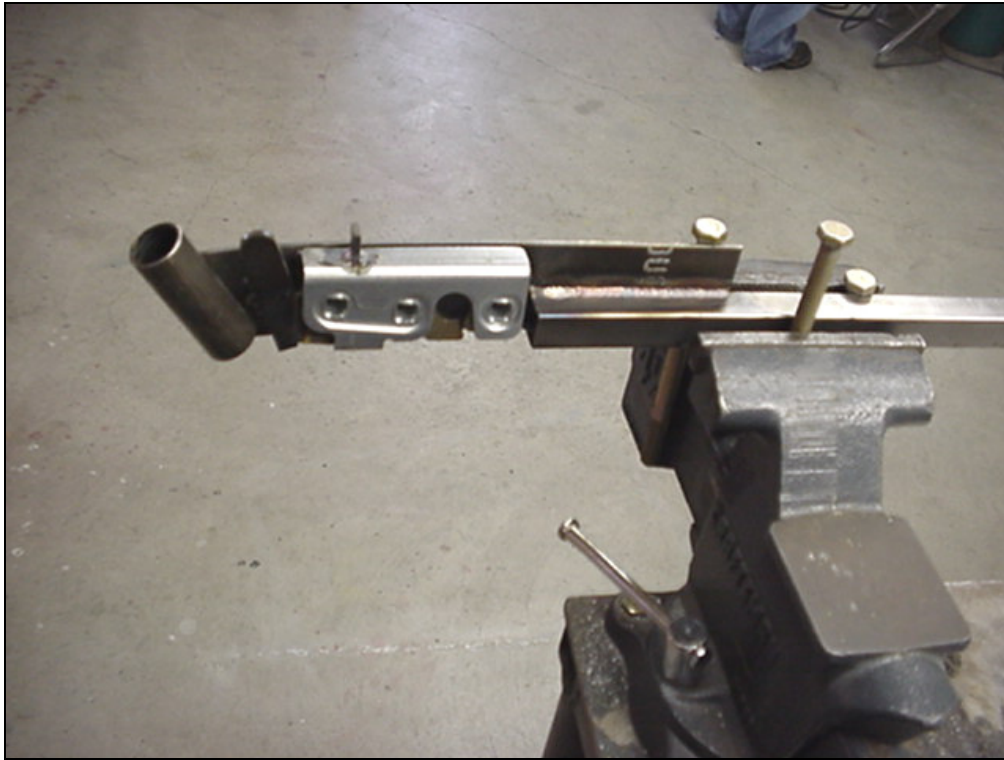


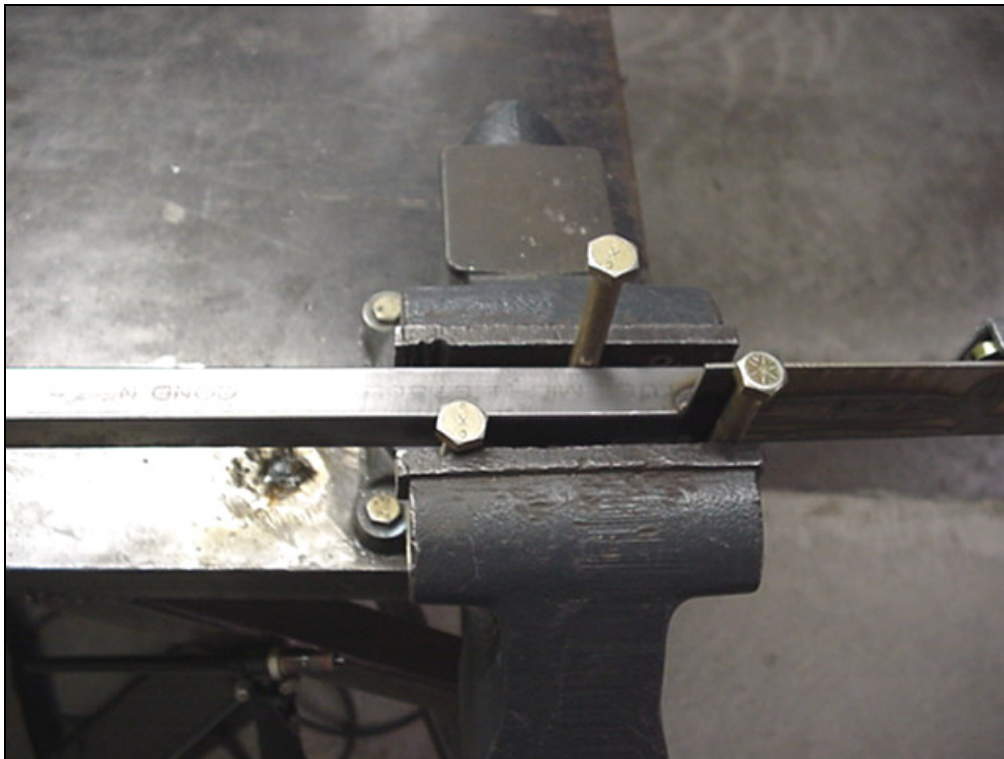
Photo of left side.
Re-install the cleco from the bottom side of the longeron.



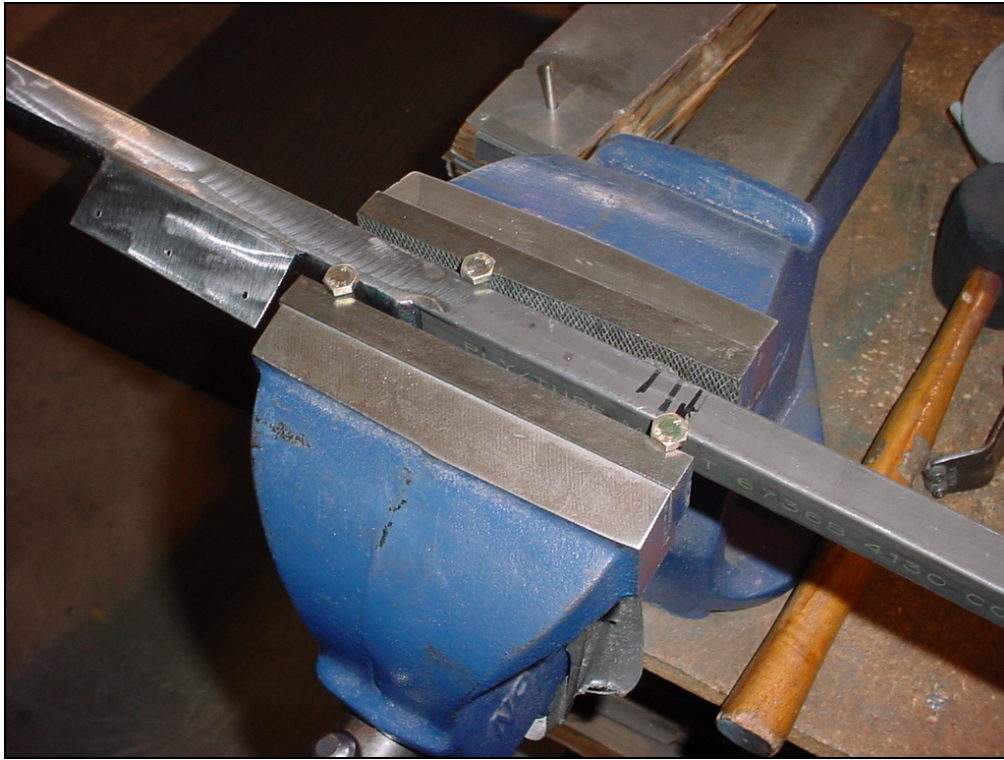
Add curvature to the canopy frame to fit the fuselage.



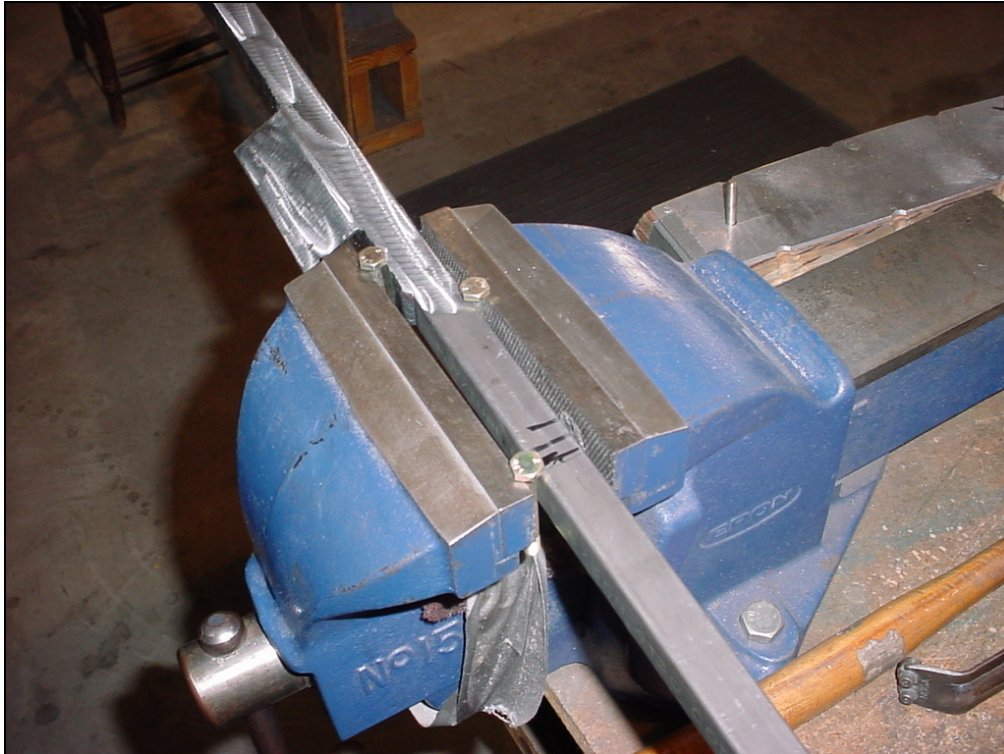
Kinks at the location of the middle bolt.



Use 3 bolts in a vise to kink the square tube.



Avoid putting too much bend in any one area at a time.



If necessary it is acceptable to bend the bottom of the canopy frame.



Photo of left canopy frame.



Photo of front underside of the canopy frame.

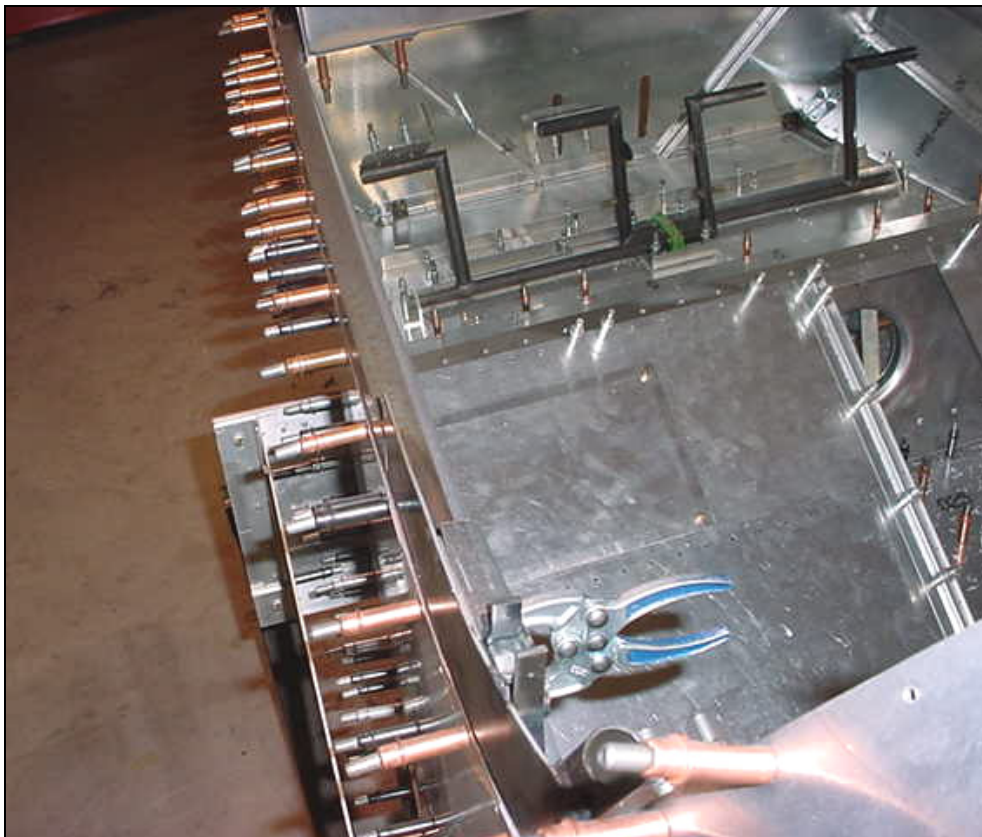


Left side.
Check that the Canopy Side Frame follows the curvature of the fuselage.

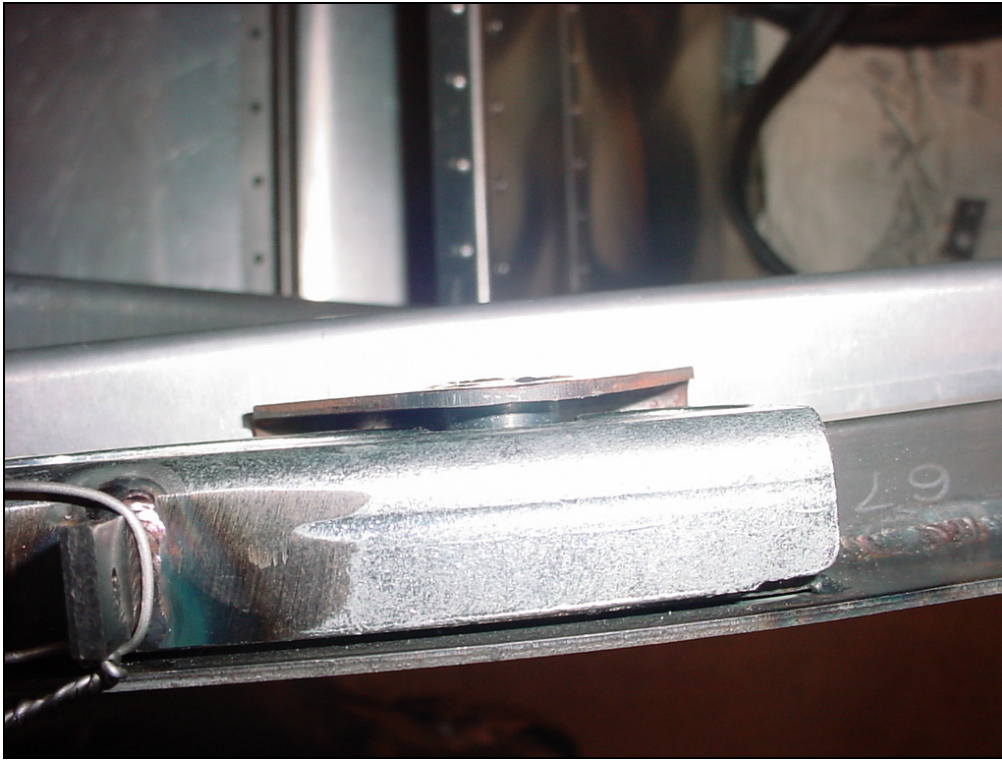


**STRIKER STUD
6C2-1**

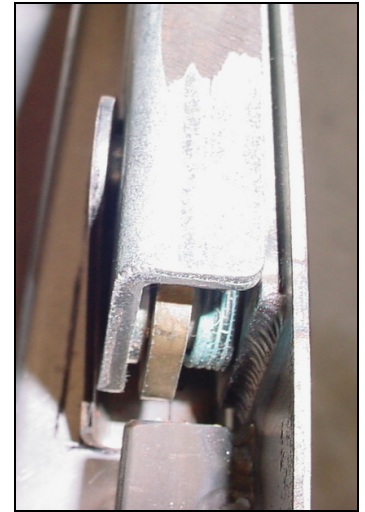
Close the canopy latch
6C2-3 over the striker
stud 6C2-1



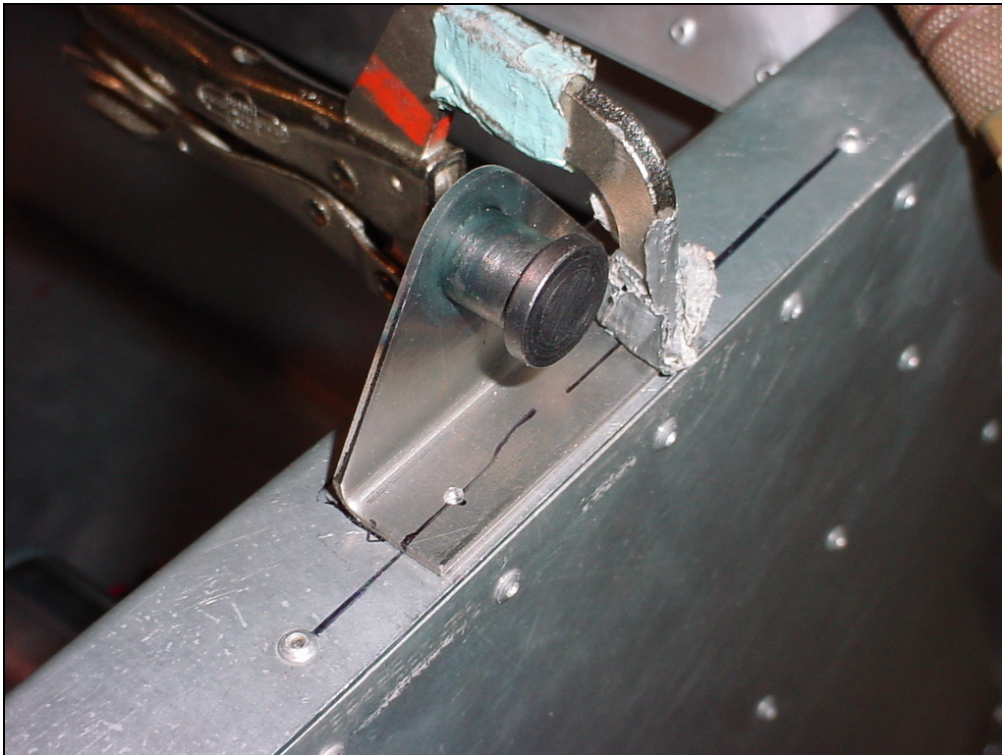
Clamp the striker stud to the longerons.



Check alignment



Center the stud under the latch.



Mark the longeron center line on the bottom flange of the stud, Drill and Cleco.