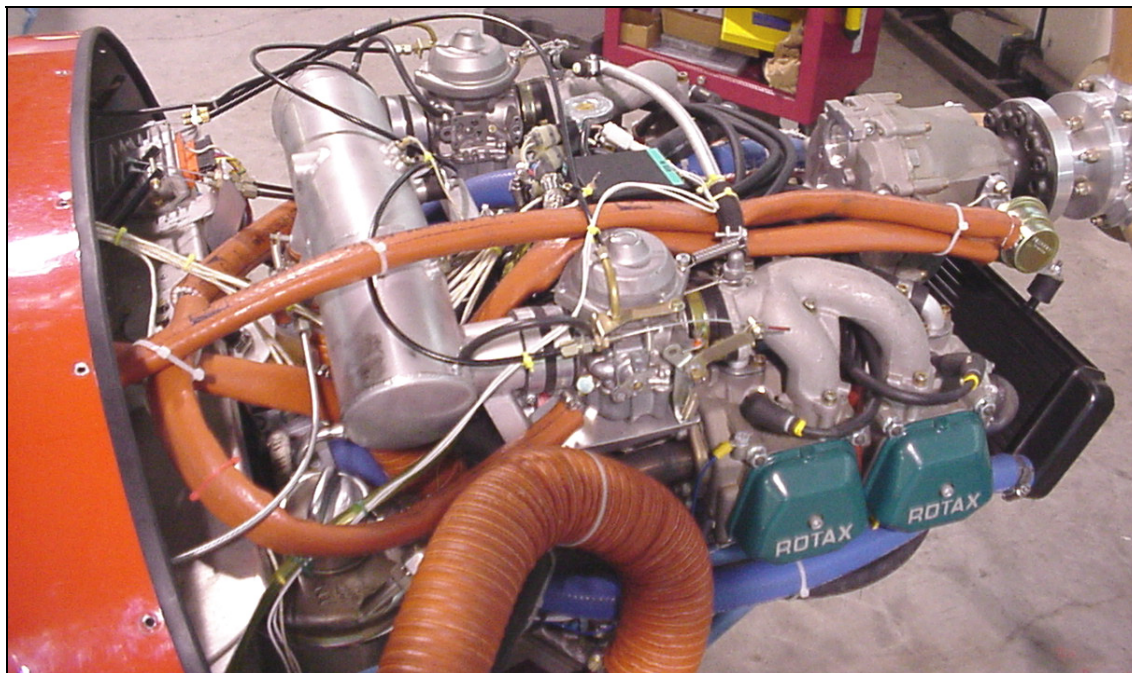
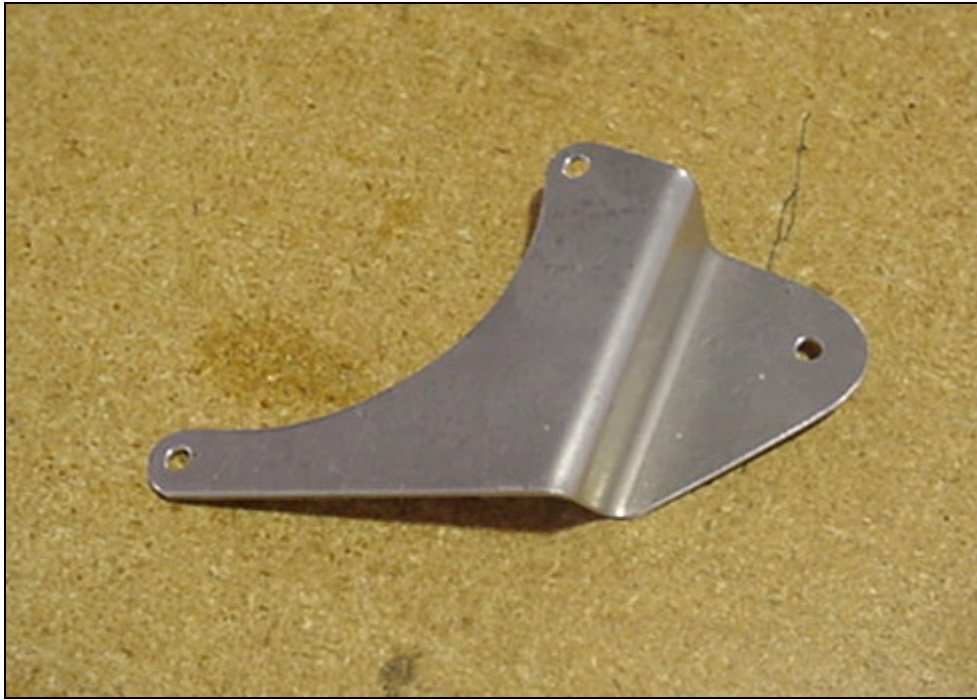


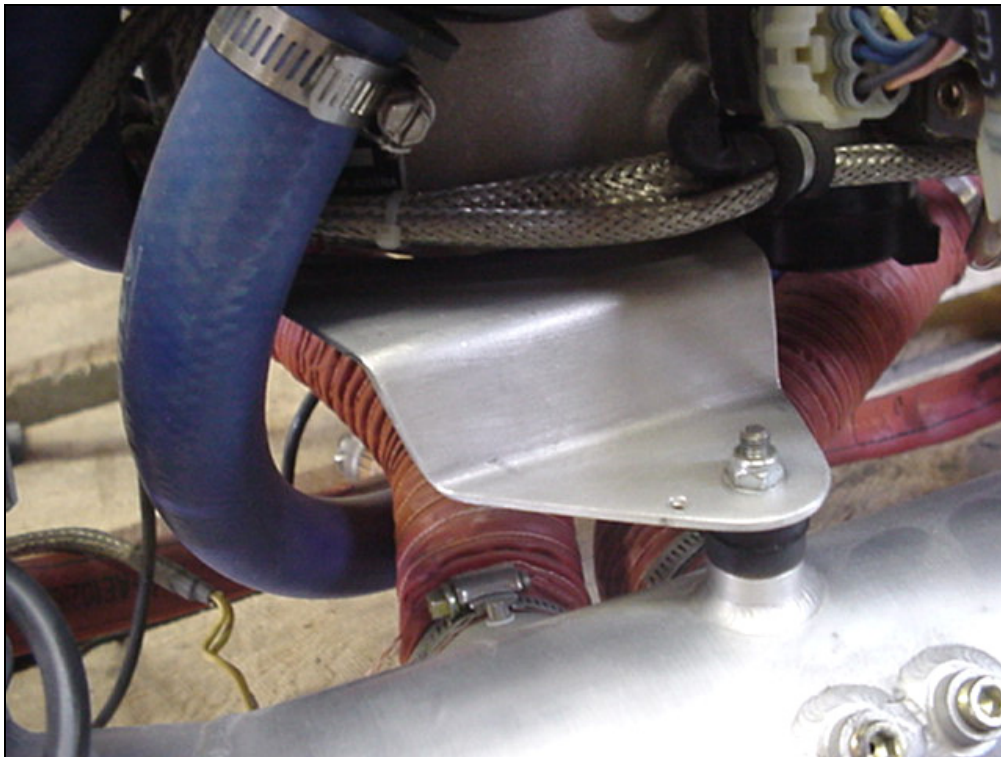
SECTION 9 AIR FILTER



- Rotax tuned air-intake box
- System requires carb heat when air intake is connected to an outside air source.

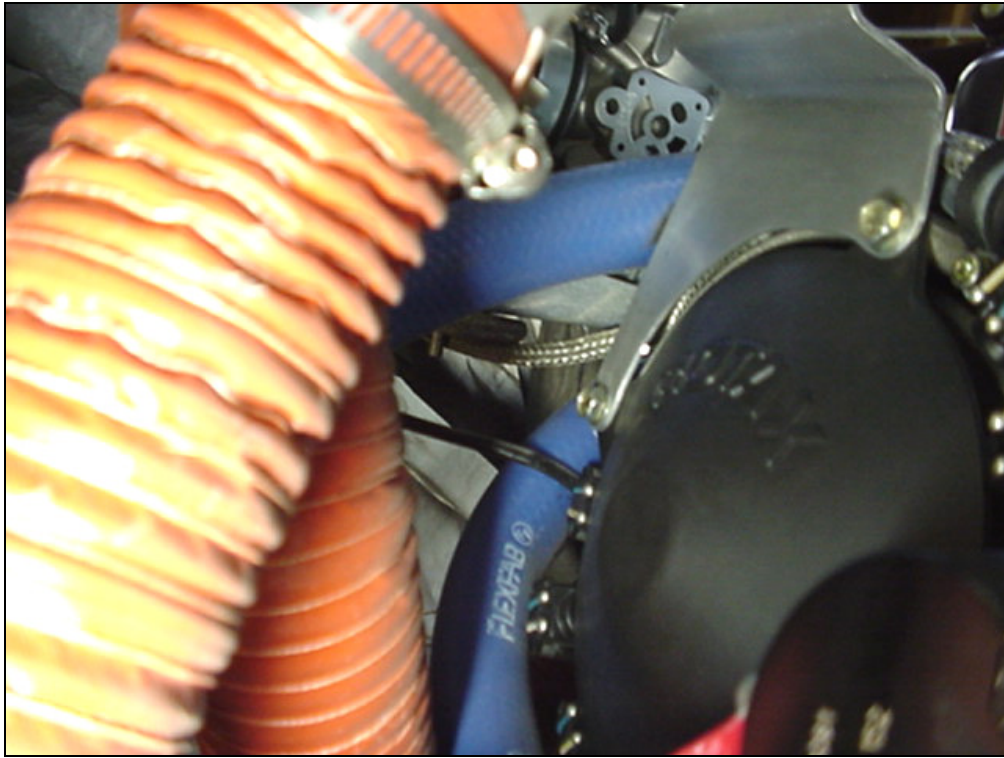


Air box middle bracket
6R4-5



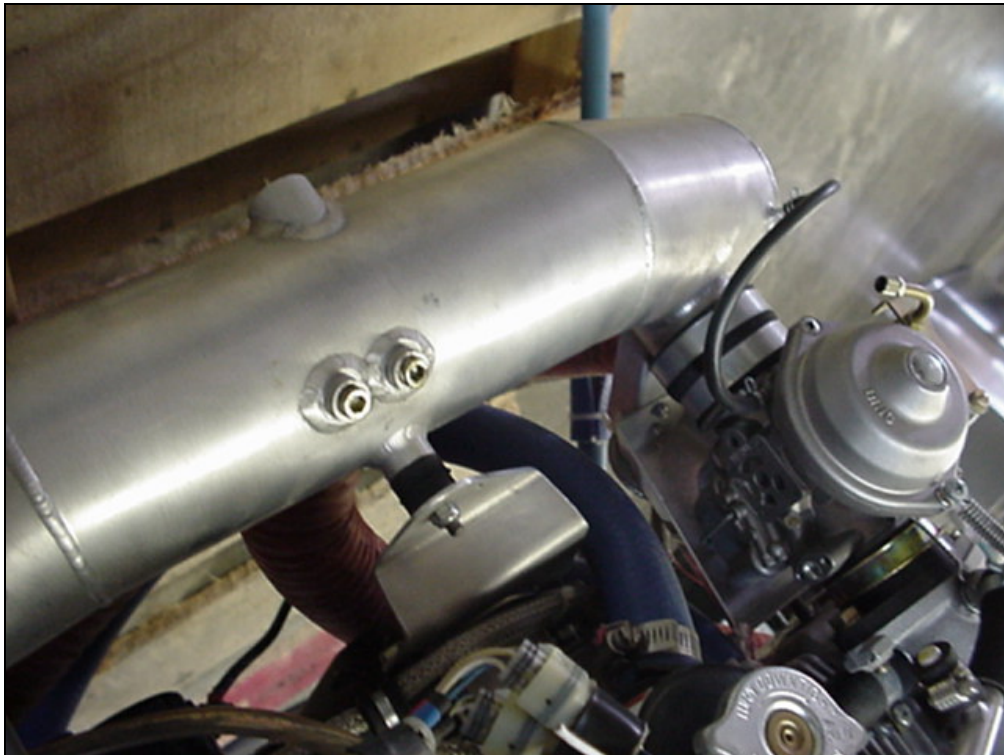
Rubber Puffer
20x15x6mm
#960-150
(supplied with airbox)

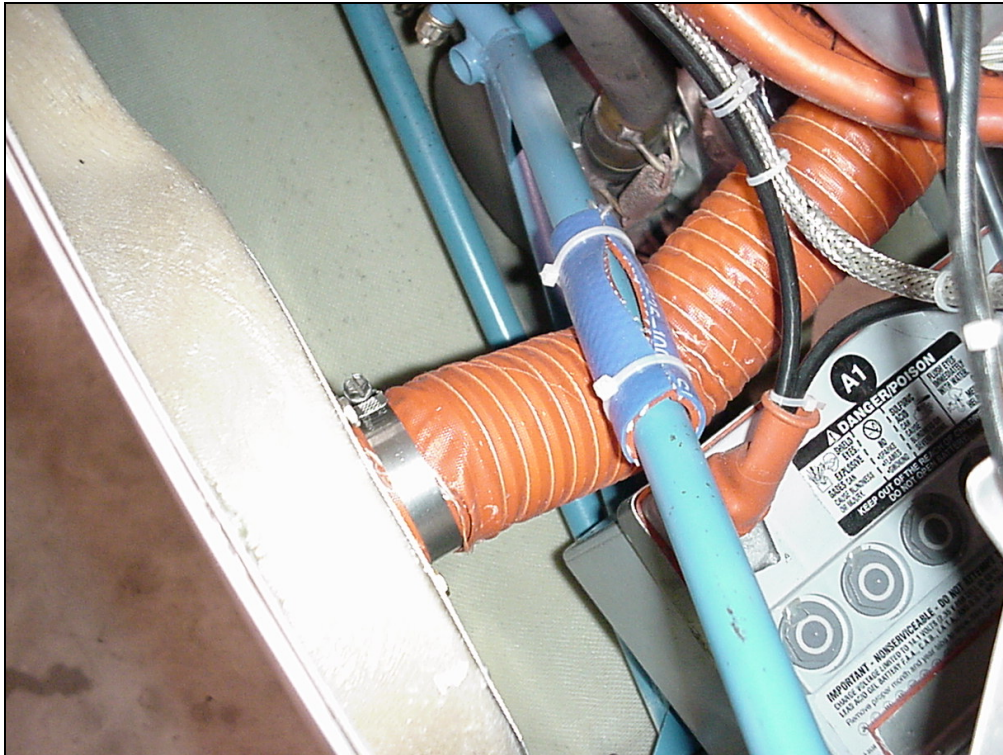
Rotax Tuned Air Box Assembly P/N **867-758**



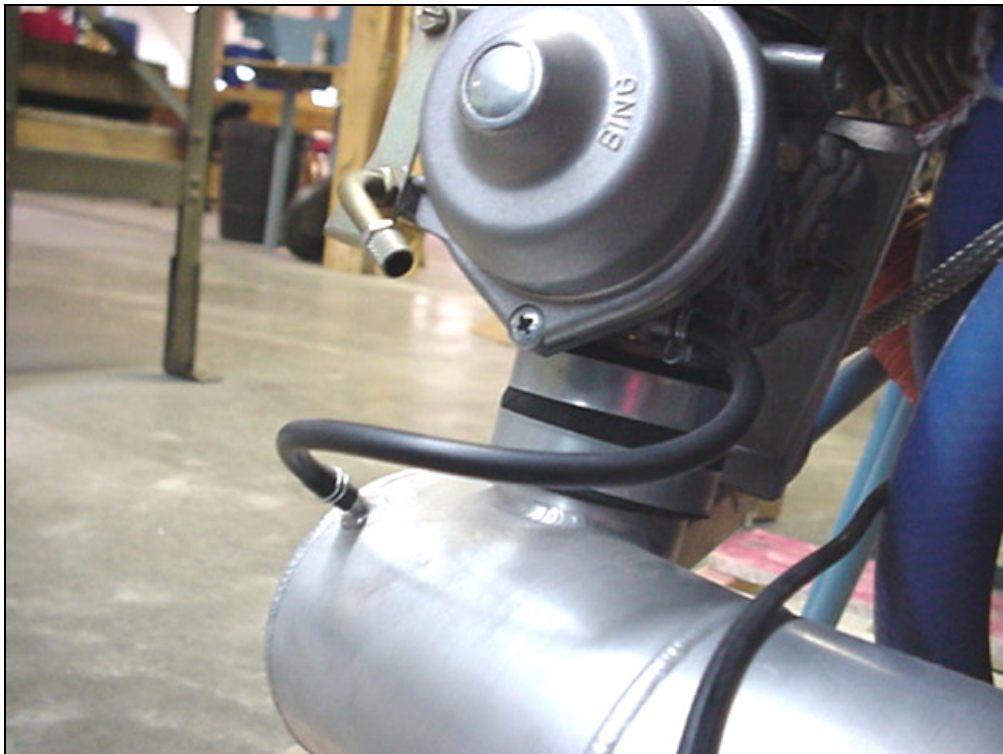
Remove top and left screw, install bracket and screws.

Detail of back side of engine cover plate





Scat hose to air filter



Vent hose connected to air-box bared outlet on the Rotax tuned air-intake box



Airscoop

Looking at the left side of cowl

Layout a 7" circle on the inside of the cowl (177mm diameter)



Rotozip Zip bit 1/8"

Cut out the circle on the I/B side of the airscoop



Air filter
7" diameter
height 1 3/4"

P/N AF-632



Front and backing plates
for the air filter

Nutplates
MS21047-L4
Qty=2

Solid rivets

**Distance between
nutplates = 120mm**

Front plate: t=.032" diameter = 200mm with welded flange.
Rear plate t=.025" diameter = 177mm



Run a bead of Silicon on the top and bottom of the air filter

Bolts
AN4-21A
Qty = 2

I/B side, flange to mount the SCAT hose. Bolts to hold the filter between the front and back plates.



Back side of air filter.

Rivet the top plate to the fiberglass cowl to the filter assembly in place.